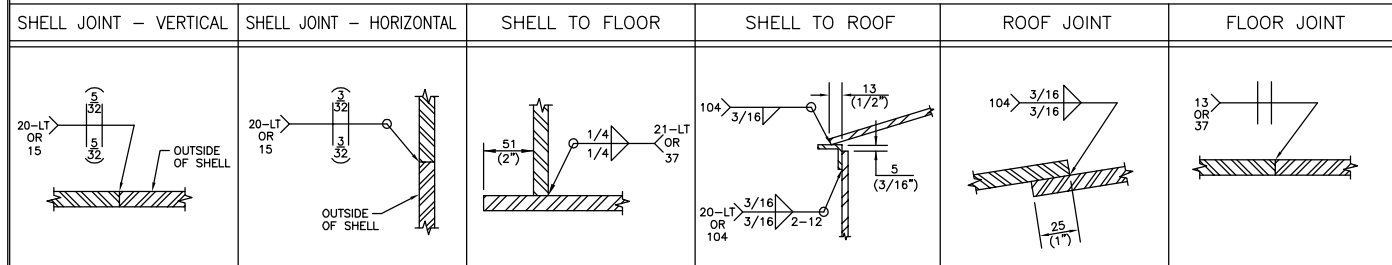


U.I.C. STANDARD WELD DETAILS (N.T.S.)

NOZZLE SCHEDULE

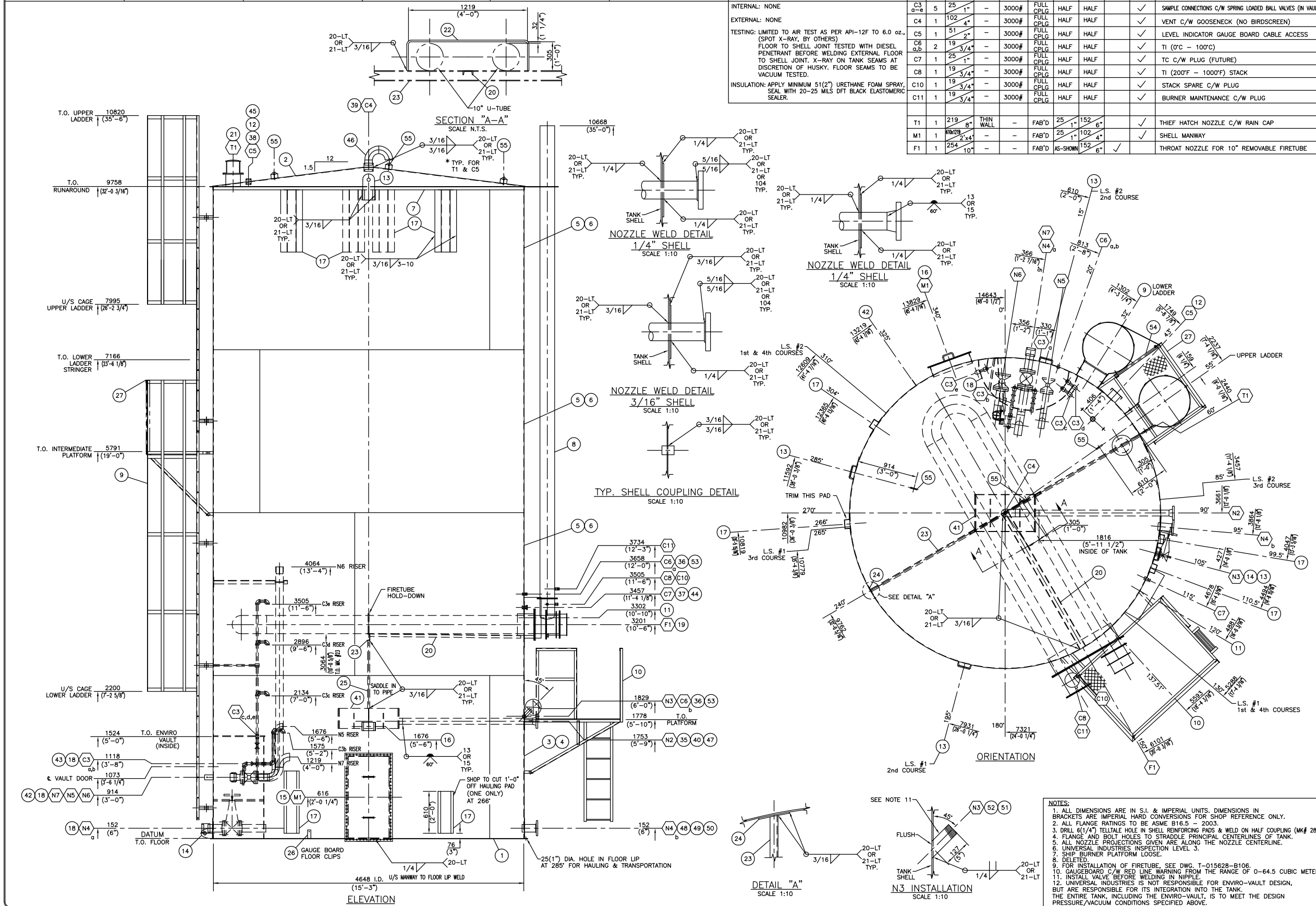
MATERIAL LIST



DESIGN CODE: API-12F MODIFIED  
 SERIAL NO: 016041-1 TO 25  
 DESIGN PRESSURE: 4 oz. PRESS. / 0.4 oz. VAC.  
 DESIGN TEMPERATURE: -13°C(8.6°F) TO 93°C(200°F)  
 OPERATING TEMPERATURE:  
 SERVICE: SWEET  
 OPERATING LEVEL:  
 CORROSION ALLOWANCE: NONE  
 OTHER:  
**FINISHING**

MK	NO	SIZE	SCH	RATE	TYPE	PROJECTION		REPAD		DESCRIPTION	
						INT.	EXT.	YES	NO		
N2	1	89	3"	STD	ANSI 300	RFWN	AS SHOWN	203	8"	✓	OIL INLET C/W INTERNAL PIPE & DEFOAMER
N3	1	80	2"	XS	-	PIPE	FLUSH	127	5"	✓	TANK LEVEL
N4	1	114	4"	XS	ANSI 150	RFSO	25	356	1'-2"	✓	DRAIN C/W GATE VALVE (IN VAULT)
N4	b	114	4"	XS	ANSI 150	RFSO	25	203	8"	✓	STINGER
N5	1	89	3"	STD	ANSI 150	RFSO	AS SHOWN	242	3 1/2"	✓	WATER OUTLET C/W BALL VALVE BY OTHERS & RISER (IN VAULT)
N6	1	114	4"	STD	ANSI 150	RFSO	AS SHOWN	166	3 1/2"	✓	OIL UNLOADING C/W BALL VALVE BY OTHERS, RISER & VORTEX BREAKER (IN VAULT)
N7	1	114	4"	STD	ANSI 150	RFSO	AS SHOWN	318	14 1/2"	✓	WATER OUTLET C/W RISER (IN VAULT)
C3	a-e	5	25	1"	-	3000#	FULL CPLG	HALF	HALF	✓	SAMPLE CONNECTIONS C/W SPRING LOADED BALL VALVES (IN VAULT)
C4	1	102	4"	-	-	3000#	FULL CPLG	HALF	HALF	✓	VENT C/W GOOSENECK (NO BIRDSCREEN)
C5	1	51	2"	-	-	3000#	FULL CPLG	HALF	HALF	✓	LEVEL INDICATOR GAUGE BOARD CABLE ACCESS
C6	a,b	2	19	3/4"	-	3000#	FULL CPLG	HALF	HALF	✓	TI (0°C - 100°C)
C7	1	25	1"	-	-	3000#	FULL CPLG	HALF	HALF	✓	TC C/W PLUG (FUTURE)
C8	1	19	3/4"	-	-	3000#	FULL CPLG	HALF	HALF	✓	TI (200°F - 1000°F) STACK
C10	1	19	3/4"	-	-	3000#	FULL CPLG	HALF	HALF	✓	STACK SPARE C/W PLUG
C11	1	19	3/4"	-	-	3000#	FULL CPLG	HALF	HALF	✓	BURNER MAINTENANCE C/W PLUG
T1	1	219	8"	THIN WALL	-	FAB'D	25	152	6"	✓	THIEF HATCH NOZZLE C/W RAIN CAP
M1	1	819	2 1/4"	-	-	FAB'D	25	102	4"	✓	SHELL MANWAY
F1	1	254	10"	-	-	FAB'D	AS SHOWN	152	6"	✓	THROAT NOZZLE FOR 10" REMOVABLE FIRETUBE

MK	QTY	DESCRIPTION	MATERIAL	WT
1	2	FLOOR PLATE (HALF) 1/4" THK. x 15'-7 1/2" DIA. (G40.21-38W)	PRT-2425	1956
2	2	ROOF PLATE (HALF) 3/16" THK. x 15'-5 13/16" FLAT DIA. (G40.21-38W)	PRT-2426	1452
3	1	SHELL PLATE 1/4" THK. x 8'-0" x 23'-11 11/16" LG.	G40.21-38W	1959
4	1	SHELL PLATE 1/4" THK. x 8'-0" x 24'-0" LG.	G40.21-38W	1960
5	3	SHELL PLATE 3/16" THK. x 8'-0" x 23'-11 1/2" LG.	G40.21-38W	4404
6	3	SHELL PLATE 3/16" THK. x 8'-0" x 24'-0" LG.	G40.21-38W	4412
7	1	RUNAROUND ANGLE 2" x 2" x 3/16" x 48'-6 3/8" LG.	G40.21-44W	118
8	1	STACK 8" THIN WALL (NO DAMPER)	REF. DWG. T-015628-B106	-
9	1	UPPER & LOWER LADDER	REF. DWG. T-015628-D103	404
10	1	BURNER PLATFORM - 1257(4'-1 1/2") x 1720(5'-7 11/16")	REF. DWG. T-015628-B104	280
11	1	BURNER CONTROL BOX (2'-0" HIGH x 2'-6" LG. x 8" DEEP)	ALUMINUM	-
12	1	3W-ARM LEVEL INDICATOR ASSEMBLY HUSKY STYLE C/W METRIC BOARD, PVC FLOW, S.S. GUIDE WIRE, FLOOR CLIPS, SPREADER BAR & MISC. HARDWARE	REF. DWG. EDS-2720	111
13	4	LIFTING LUG	PRT-4274	30
14	1	TAILING LUG C/W REPAD	PRT-4276	10
15	1	SHELL MANWAY 2'-0" x 4'-0" C/W 1/4" COVER	PRT-1221 PRT-1673	191
16	1	NAMEPLATE BRACKET C/W PLUG	PRT-2896	5
17	6	TANK HAULING PAD	PRT-1494	180
18	1	ENVIRO-VAULT (5' x 5' DBL DOOR) & NOZZLE DETAIL	REF. DWG. T-015628-D102	613
19	1	FIRETUBE REMOVABLE U-TUBE 10" SCH STD. (EXTENDED LENGTH) 750,000 BTU/HR.	REF. DWG. T-015628-B106	2156
20	1	CHANNEL C4 x 5.4# x 7'-6 11/16" LG.	G40.21-44W	41
21	1	THIEF HATCH NOZZLE C/W RAIN CAP	REF. DWG. T-015628-A110	21
22	1	FIRETUBE BRACE FOR 10" U-TUBE	PRT-2903	6
23	1	CHANNEL C4 x 5.4# x 15'-2 5/8" LG.	G40.21-44W	82
24	2	REPAD PLATE 1/4" THK. x 6" DIA.	G40.21-38W	4
25	1	PIPE 1" SCH STD x 4'-0" LG. ERW PBE (TRIM TO SUIT)	SA-53-B	6
26	2	FLATBAR 1/4" THK. x 2" x 5" LG. (STOCK LADDER CLIP)	PRT-4283	1
27	1	INTERMEDIATE PLATFORM	REF. DWG. T-015628-C107	217
28	3	HALF COUPLING 1/4" 3000# F.S. SCR'D	SA-105	1
29				
30				
31				
32				
33				
34				
35	1	FLANGE 3" ANSI 300 RFWN x SCH STD BORE	SA-105	15
36	2	FULL COUPLING 3/4" 3000# F.S. SCR'D	SA-105	1
37	1	FULL COUPLING 1" 3000# F.S. SCR'D	SA-105	1
38	1	FULL COUPLING 2" 3000# F.S. SCR'D	SA-105	3
39	1	FULL COUPLING 4" 3000# F.S. SCR'D	SA-105	8
40	1	PIPE 3" SCH STD x 6'-4 5/8" LG. SMLS POE x BOE	SA-106-B	64
41	1	DEFOAMER 1'-10" WIDE x 3'-0" LG. (SUPPLIED BY STRONGHOLD WELDING)	C.S.	149
42	1	GROUNDING LUG	REF. DWG. EDS-2409(015628)	2
43	1	ENVIRO-VAULT WALL/ROOF DETAILS	PRT-4335	765
44	1	HEX PLUG 1" NPT	SA-105	1
45	1	BUSHING 2" x 1 1/2" 150#	M.I.	1
46	1	4" GOOSENECK VENT THR'D	PRT-2899	24
47	1	REPAD PLATE 1/4" THK. - 3" SHELL NOZZLE	PRT-1586	6
48	1	DOGHOUSE REPAD 1/4" THK. - 1'-0" x 1'-0"	PRT-4393	8
49	1	FLANGE 4" ANSI 150 RFSO	SA-105	12
50	1	PIPE 4" SCH XS x 8 7/8" LG. SMLS PBE	SA-106-B	11
51	1	CLIP GATE VALVE 2"	-	-
52	1	PIPE 2" SCH XS x 6" LG. SMLS TOE x 45' MITER	SA-106-B	2
53	2	TEMPERATURE GAUGE 4" FACE x 1'-0" LG. STEM x 1/2" NPT CONN. (-20°C - 120°C) RANGE	-	-
54	1	SAFETY GATE	REF. DWG. EDS-4105(015628)	24
55	3	TANK ROOF SAFETY HARNESS LUG	PRT-2533	1



\*QTY'S ARE FOR ONE TANK - 25 REQ'D SUBTOTAL 21719 x 1.06 = 23022 lbs. TOTAL

NO	DATE (d/m/y)	REVISIONS	BY	APPD
03/12/09		AS BUILT, NO CHANGE	KE	JK
28/05/08		ISSUED FOR CONSTRUCTION	JKK	JK

CLIENT

DWG TITLE: 1000 BBL PRODUCTION TANK - 2008 VERSION GENERAL ARRANGEMENT

SIZE: 4648mm I.D. x 9758mm HIGH (15'-3" I.D. x 32'-0 3/16" HIGH)

VOLUME: 159 CU. METERS (1000 Bbl)

SCALE: 1:30

DWN BY: J. KELLY

DWG NO.:

DATE (d/m/y): 28/05/08

CHKD: TWA

TWA: 03/12/09

APPD: JK

JK: 03/12/09

SHEET NO. 1 of 1

REV. NO. 1