

CJV#1959

# 165HP Weatherford Sour W165-M Injection / Disposal Pump Package



This package, along with its available twin unit CJVI960, was built in 2013. For the first few years of their operation, they were pumping good clean shipping oil down the pipeline. The property they were originally installed on was sold in 2019, and these packages were refitted, then redeployed into a water injection project. In this process, all new internally coated piping was installed and the pumps were overhauled. In their current configuration, all water filtration happens at a central building so there's no on-skid filtration. However, to make room for filters (up to a 7 bag), all that's required in each are 4 spools, rotating the charge pump, and voila! Designed for 1500# and sour service makes these flexible anywhere you take them.

We've inspected the packages (reports available) and outside of the typical, there's no major work that is required to confidently redeploy these right back into service.

CJV#1959

## 165HP Weatherford Sour W165M Injection / Disposal Pump Package



<b>Condition</b>	Used/Minor Repairs Required
<b>Manufactured</b>	2013 Candyne Pumps
<b>Location</b>	NW Alberta
<b>Availability</b>	Immediate
<b>Service</b>	Sour
<b>Pump</b>	Weatherford W165M (New aluminum bronze fluid end 2017) c/w 100HP TEXP Motor
<b>Boost Pump</b>	ANSI Style 3x2-13 c/w 15HP Motor
<b>Piping</b>	900# Discharge – Internally coated (pipe constructed new in 2019)
<b>Electrical</b>	LEL, int/ext lights, receptacle, exhaust fan etc all wired to JB's HOA's for motors
<b>Dimensions</b>	20' L x 15' W x 12'6" H (shipping dimensions)



Take a 3D walkthrough at <https://bit.ly/3Dew8YL>

# Pump & Accessories

## MAIN PUMP, MOTOR AND EQUIPMENT

### Triplex Pumps:

- One (1) Weatherford W165M Triplex Pump
- Aluminum Bronze Fluid End
- 2.750" TC plungers currently installed
- Maximum Continuous RPM Rating: 400RPM
- 4" Suction, 2" Discharge Connections
- Rated for 165HP (Input) Continuous Duty
- Sheave Kit and V-Belt Drive
- Aluminum Belt Guard
- 3 Feed Lubricators w/ Oil Reservoir
- Suction & Discharge 600cu In Stabilizers
- Mounted on sub assembly and attached to main skid

### Pump Notes:

- Pump is in really good condition as verified by our own internal inspection. The inspection report is available for review by interested parties.

				100 RPM	200 RPM	250 RPM	350 RPM	400 RPM						
Model	Plunger	Gal/Rev	Max PSI	Max kPa	m <sup>3</sup> /d	GPM	m <sup>3</sup> /d	GPM	m <sup>3</sup> /d	GPM	m <sup>3</sup> /d	GPM	m <sup>3</sup> /d	GPM
Weatherford W165-M	2.0"	0.204	3120	21512	111.2	20.4	222.4	40.8	278	51	389.2	71.4	444.8	81.6
	2.125"	0.2303	2760	19030	125.54	23.03	251.07	46.06	313.84	57.575	439.38	80.605	502.15	92.12
	2.25"	0.2582	2460	16961	140.74	25.82	281.49	51.64	351.86	64.55	492.61	90.37	562.98	103.28
	2.375"	0.2877	2210	15237	156.82	28.77	313.65	57.54	392.06	71.925	548.89	100.7	627.3	115.08
	2.5"	0.3187	2000	13790	173.72	31.87	347.45	63.74	434.31	79.675	608.03	111.55	694.89	127.48
	2.625"	0.3514	1810	12480	191.55	35.14	383.1	70.28	478.87	87.85	670.42	122.99	766.19	140.56
	2.75"	0.3857	1650	11376	210.24	38.57	420.49	77.14	525.61	96.425	735.86	135	840.98	154.28

### Triplex Pump Motors:

- One (1) TECO Westinghouse 100 HP Electric Motors
- TEFC; 1200RPM
- VFD Rated, Constant torque
- 480/3/60VAC

# Piping

## PIPING

- 4" 150# Suction piping
  - The piping is currently configured to direct water into the charge pump, then exit the building to a filter skid, then return to the building via 4" suction. Connection spools need to be constructed and installed inside if no filtration is needed.
  - If filtration is needed on skid, there is room within the building to re-orientate the charge pump, build a few more spools, and add in a 5 or 7 bag filter
- 2" pump discharge swadges up to 3" 900# discharge piping
- 2" Manual Startup bypass Internally Coated
- All piping constructed new in 2017

## SKID

- 20' L x 15' W x 12'6" H Skid and Building
- ¼" Checker Plate Flooring
- 2" Drip Lip Around Skid
- One (1) Open Sumps
- 3" Fire Retardant Spray Foam Under skid  
Insulation Insulated Skid

## BUILDING

- Gable Style Building
- Ice Rakes
- Four (4) 12" x 18" Louvers w/ closers
- One (1) Double Man Door
- One (1) Single Man Door

## ELECTRICAL

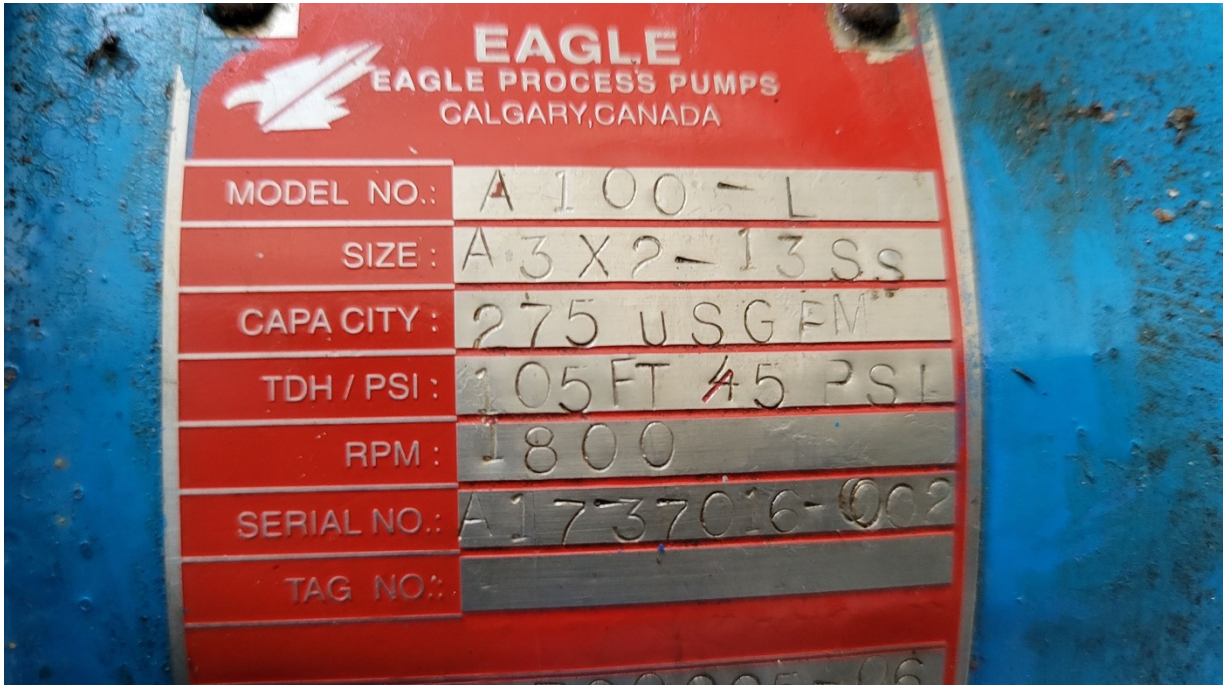
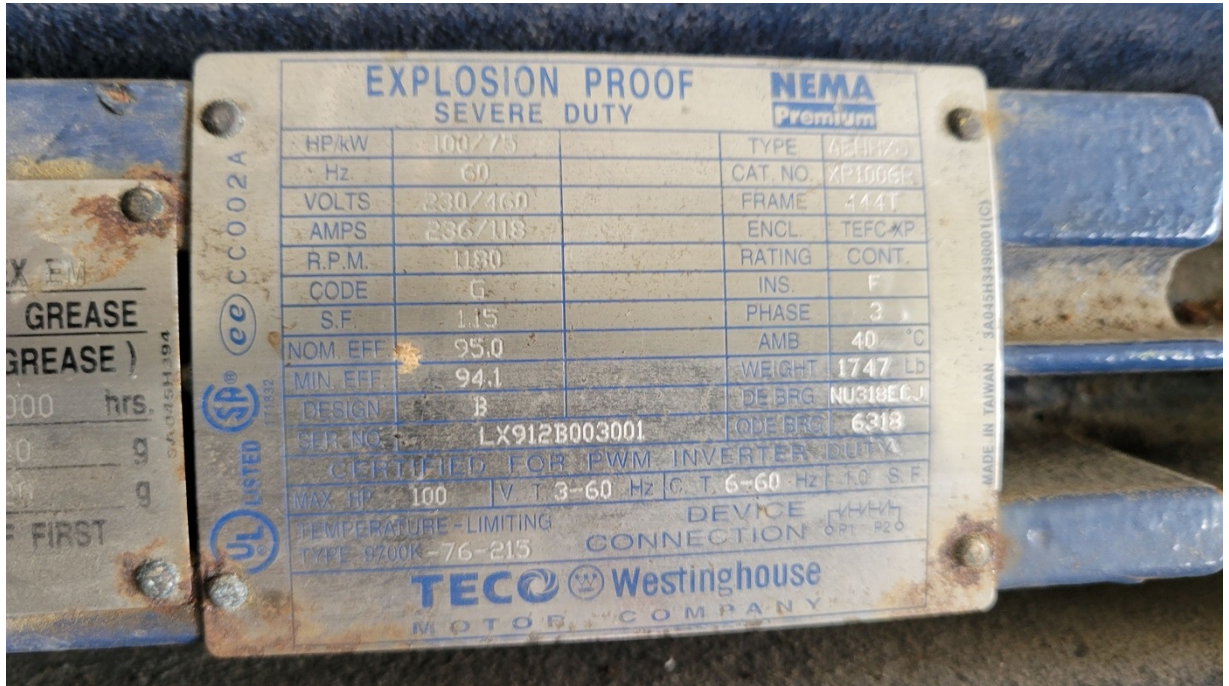
- Three (3) Interior Lights w/ Switches
- Two (2) Exterior Lights w/ Switches
- One (1) High Mount Exhaust Fan w/ switch
- One (1) Low Mount Exhaust Fan w/ switch
- LEL Gas Detection
- Fire-eye
- One (1) 120V Electrical Receptacle
- Two (2) ESD Buttons
- Two (2) Catadyne heaters w/ thermostats
- Wired to JB's



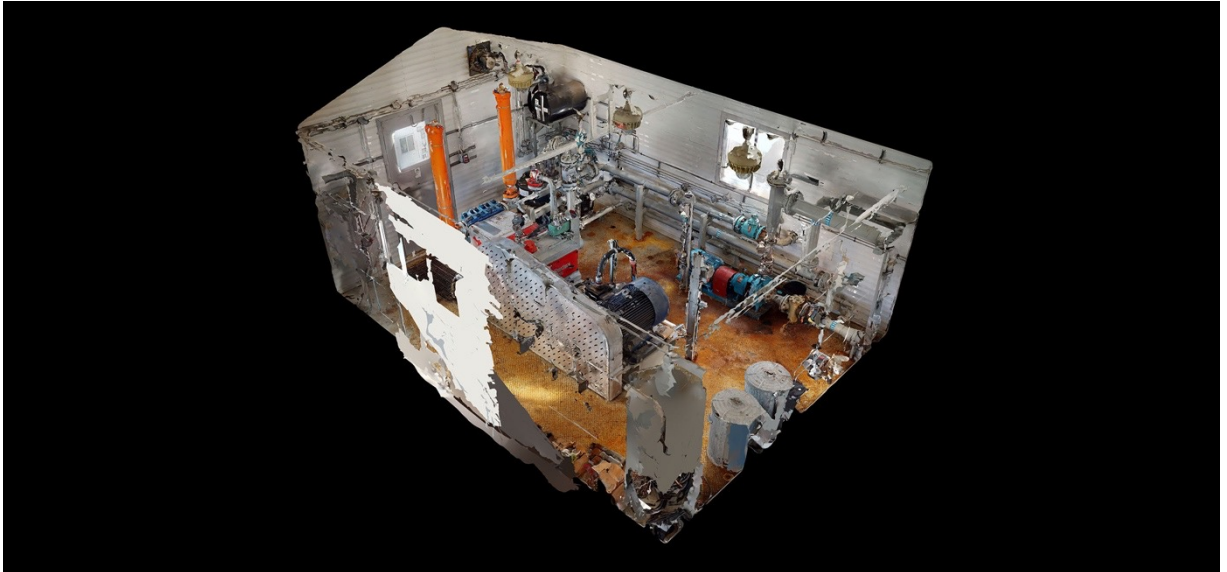












Take a 3D walkthrough at <https://bit.ly/3Dew8YL>