

#1964

# 200kW Diesel Prime Power Generator Package

ZBM

*FOR IMMEDIATE SALE*



New and never-used, this 200kW HIPOWER CSA certified generator package is powered by a John Deere diesel engine driving a Stamford generator. It includes a Murphy 2 gallon engine oil maintainer, a diesel-powered engine pre-heater for cold starts, an external ESD, and the radiator has auto-louvers. The generator sits on its own UL listed 1500 litre fuel tank and includes a 2000 litre UL/CSA fuel cube with connection hoses which gives this package the ability to run for 64 hours between fills at 100% output. The generator control is handled by a Deep Sea Electronics DSE7310 control panel, which is good for manual, automatic, or remote-control operation. All rotating and hot components are protected by steel guards. Also included is a main line ABB UL listed circuit breaker for overload protection. This unit has been started up & load-tested as part of an inspection in September of 2021 and is ready for operation.

**FOR IMMEDIATE SALE**

#1964

## 200kW Prime Power Generator Package



<b>Condition</b>	New / never-used
<b>Manufactured</b>	HIPOWER 2015
<b>Location</b>	Leduc, Alberta
<b>Availability</b>	Immediate
<b>Hours</b>	6
<b>Driver</b>	John Deer 6090HF484A 9.0L Diesel Engine
<b>Driven</b>	Stamford 277/480V, 60Hz, 3 Phase, 584/337 A, 0.8 PF
<b>Controller</b>	Deep Sea Electronics DSE 7310
<b>Fuel Tanks</b>	1500L integrated and separate 2000L fuel cube w/ connection hoses
<b>Dimensions</b>	14'9" long x 66" wide x 8'6" high





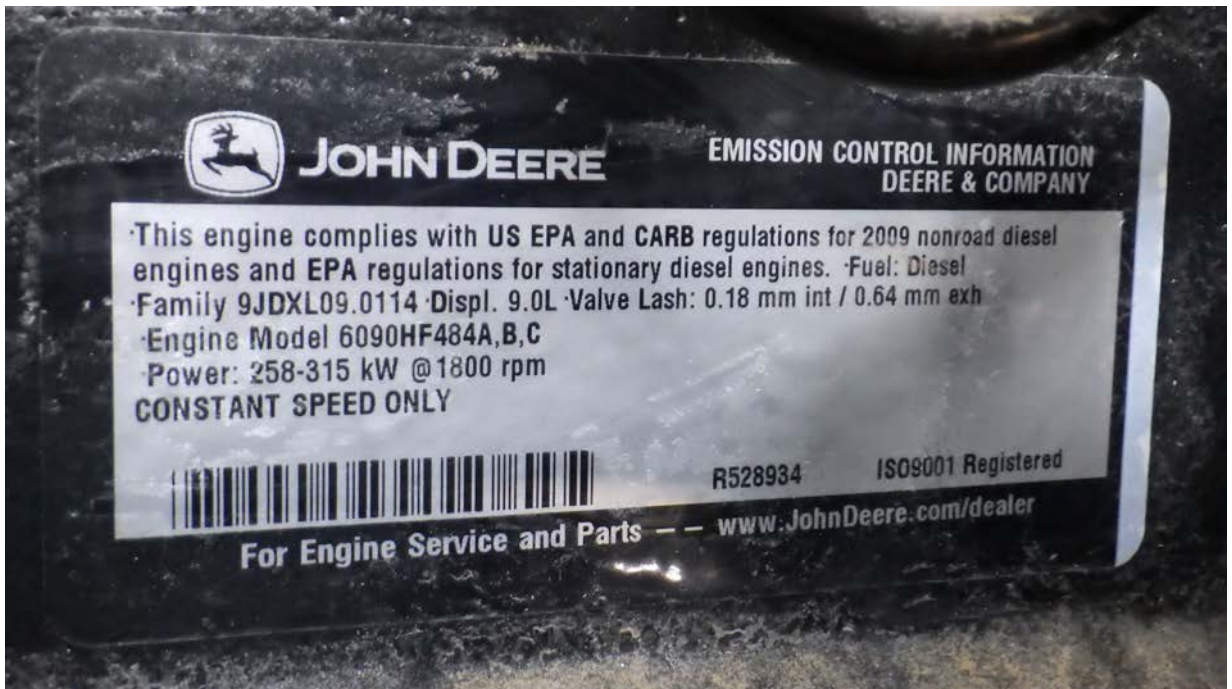












# STAMFORD®

SERIAL NUMBER	X13C125489		DUTY	Continuous (S1)
FRAME/CORE	UCI274H1			
BASE RATING kVA	237.5	EXCITATION VOLTAGE	36	
BASE RATING kW	190	EXCITATION CURRENT	1.8	
AMPERES(BR)	659.2	INSULATION CLASS	H	
FREQUENCY	60 Hertz	AMBIENT TEMPERATURE	40 C	
RPM	1800	TEMPERATURE RISE	125 C	
VOLTAGE	208	THERMAL CLASSIFICATION	180 C	
PHASE	3	ENCLOSURE	IP23	
PF	0.80	STATOR WINDING	311	
		STATOR CONNECTION	Parallel Star	

BS 5000 PART 3 IEC 34-1 ISO 8528-3  
 NEMA MG 1-32 BS EN 60034-1

BARNACK ROAD, STAMFORD, Lincs, PE9 2NB, UK




UL 1446 info  
**STAMFORD®**  
UL File: OLVJ2 E105471  
 Designation: H UL1446  
 Factory ID: Code: 9F



LR 11305

# ZBM

Zierke Built Manufacturing, Inc.  
 120 6th Ave. SE, Winnebago, MN 56098 (507) 893-3688  
 www.zbminc.com

c  US LISTED

SECONDARY CONTAINMENT GENERATOR BASE TANK

Serial No. **A10353093**

The Annular Space Requires Emergency Relief Venting. Capacity Not Less Than **94600** Cubic Feet Per Hour

This Tank Requires Emergency Relief Venting. Capacity Not Less Than **93000** Cubic Feet Per Hour

Diesel Fuel Only - This Tank Is Intended For Stationary Installation Only

Pressurize Primary Tank When Pressure Testing Annular Space

Maximum Load Capacity **25000** Lbs.

Primary Tank **300** Gallons

Emergency Vent Opening Is Located On Rupture Basin

This Tank Was Tested At **150** PSI

Date Of Manufacture **12/2013**