



#1959

**165HP Weatherford
Sour W165-M
Injection / Disposal
Pump Package**

FOR IMMEDIATE SALE



This package, along with its available twin unit #1960, was built in 2013. For the first few years of their operation, they were pumping good clean shipping oil down the pipeline. The property they were originally installed on was sold in 2019, and these packages were refitted, then redeployed into a water injection project. In this process, all new internally coated piping was installed and the pumps were overhauled. In their current configuration, all water filtration happens at a central building so there's no on-skid filtration. However, to make room for filters (up to a 7 bag), all that's required in each are 4 spools, rotating the charge pump, and voila! Designed for 1500# and sour service makes these flexible anywhere you take them.

We've inspected the packages (reports available) and outside of the typical, there's no major work that is required to confidently redeploy these right back into service.

FOR IMMEDIATE SALE

#1959

165HP Weatherford Sour W165M Injection / Disposal Pump Package



Condition	Used/Minor Repairs Required
Manufactured	2013 Candyne Pumps
Location	NW Alberta
Availability	Immediate
Service	Sour
Pump	Weatherford W165M (New aluminum bronze fluid end 2017) c/w 100HP TEXP Motor
Boost Pump	ANSI Style 3x2-13 c/w 15HP Motor
Piping	900# Discharge – Internally coated (pipe constructed new in 2019)
Electrical	LEL, int/ext lights, receptacle, exhaust fan etc all wired to JB's HOA's for motors
Dimensions	20' L x 15' W x 12'6" H (shipping dimensions)



Take a 3D walkthrough at <https://bit.ly/3Dew8YL>

Pump & Accessories

MAIN PUMP, MOTOR AND EQUIPMENT

Triplex Pumps:

- One (1) Weatherford W165M Triplex Pump
- Aluminum Bronze Fluid End
- 2.750" TC plungers currently installed
- Maximum Continuous RPM Rating: 400RPM
- 4" Suction, 2" Discharge Connections
- Rated for 165HP (Input) Continuous Duty
- Sheave Kit and V-Belt Drive
- Aluminum Belt Guard
- 3 Feed Lubricators w/ Oil Reservoir
- Suction & Discharge 600cu In Stabilizers
- Mounted on sub assembly and attached to main skid

Pump Notes:

- Pump is in really good condition as verified by our own internal inspection. The inspection report is available for review by interested parties.

					100 RPM	200 RPM	250 RPM	350 RPM	400 RPM					
Model	Plunger	Gal/Rev	Max PSI	Max kPa	m ³ /d	GPM	m ³ /d	GPM	m ³ /d	GPM	m ³ /d	GPM	m ³ /d	GPM
Weatherford W165-M	2.0"	0.204	3120	21512	111.2	20.4	222.4	40.8	278	51	389.2	71.4	444.8	81.6
	2.125"	0.2303	2760	19030	125.54	23.03	251.07	46.06	313.84	57.575	439.38	80.605	502.15	92.12
	2.25"	0.2582	2460	16961	140.74	25.82	281.49	51.64	351.86	64.55	492.61	90.37	562.98	103.28
	2.375"	0.2877	2210	15237	156.82	28.77	313.65	57.54	392.06	71.925	548.89	100.7	627.3	115.08
	2.5"	0.3187	2000	13790	173.72	31.87	347.45	63.74	434.31	79.675	608.03	111.55	694.89	127.48
	2.625"	0.3514	1810	12480	191.55	35.14	383.1	70.28	478.87	87.85	670.42	122.99	766.19	140.56
	2.75"	0.3857	1650	11376	210.24	38.57	420.49	77.14	525.61	96.425	735.86	135	840.98	154.28

Triplex Pump Motors:

- One (1) TECO Westinghouse 100 HP Electric Motors
- TEFC; 1200RPM
- VFD Rated, Constant torque
- 480/3/60VAC

Piping

PIPING

- 4" 150# Suction piping
 - The piping is currently configured to direct water into the charge pump, then exit the building to a filter skid, then return to the building via 4" suction. Connection spools need to be constructed and installed inside if no filtration is needed.
 - If filtration is needed on skid, there is room within the building to re-orientate the charge pump, build a few more spools, and add in a 5 or 7 bag filter
- 2" pump discharge swadges up to 3" 900# discharge piping
- 2" Manual Startup bypass Internally Coated
- All piping constructed new in 2017

SKID

- 20' L x 15' W x 12'6" H Skid and Building
- ¼" Checker Plate Flooring
- 2" Drip Lip Around Skid
- One (1) Open Sumps
- 3" Fire Retardant Spray Foam Under skid
Insulation Insulated Skid

BUILDING

- Gable Style Building
- Ice Rakes
- Four (4) 12" x 18" Louvers w/ closers
- One (1) Double Man Door
- One (1) Single Man Door

ELECTRICAL

- Three (3) Interior Lights w/ Switches
- Two (2) Exterior Lights w/ Switches
- One (1) High Mount Exhaust Fan w/ switch
- One (1) Low Mount Exhaust Fan w/ switch
- LEL Gas Detection
- Fire-eye
- One (1) 120V Electrical Receptacle
- Two (2) ESD Buttons
- Two (2) Catadyne heaters w/ thermostats
- Wired to JB's







EXPLOSION PROOF SEVERE DUTY **NEMA Premium**

HP/KW	100/75	TYPE	4EFL1Z0
Hz	60	CAT. NO.	XP1006P
VOLTS	230/460	FRAME	144T
AMPS	236/118	ENCL.	TEFC-XP
R.P.M.	1180	RATING	CONT.
CODE	G	INS.	F
S.F.	1.15	PHASE	3
NOM. EFF.	95.0	AMB	40 °C
MIN. EFF.	94.1	WEIGHT	1747 LB
DESIGN	B	DE BRG	NU318ECJ
SER. NO.	LX912B003001	ODE BRG	6318
CERTIFIED FOR PWM INVERTER DUTY			
MAX HP	100	V T 3-60 HZ	C T 6-60 HZ
TEMPERATURE-LIMITING TYPE 9200K-76-215		DEVICE CONNECTION	
		YHYH OPT P20	

TECO Westinghouse MOTOR COMPANY

UL LISTED FT1992

SA 03634 194

CC002A

MADE IN TAIWAN 340151830001(C)

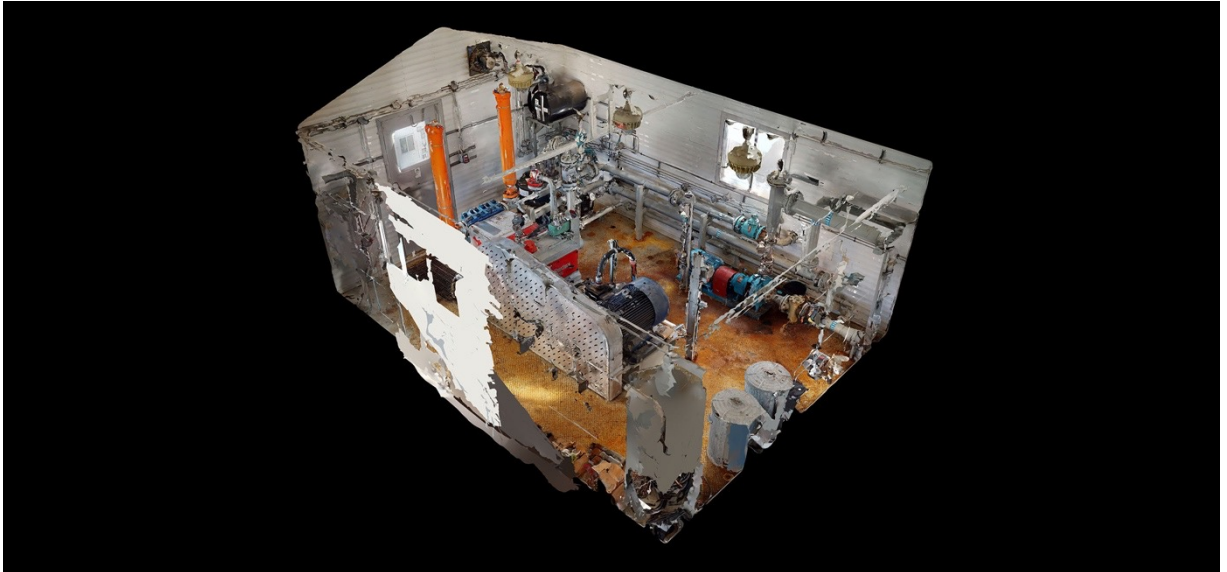
GREASE
000 hrs.
FIRST

EAGLE
EAGLE PROCESS PUMPS
CALGARY, CANADA

MODEL NO.:	A 100-L
SIZE:	A 3 X 2-13 SS
CAPA CITY:	275 USGFM
TDH / PSI:	105 FT 45 PSI
RPM:	1800
SERIAL NO.:	A1737016-002
TAG NO.:	

700005-06





Take a 3D walkthrough at <https://bit.ly/3Dew8YL>