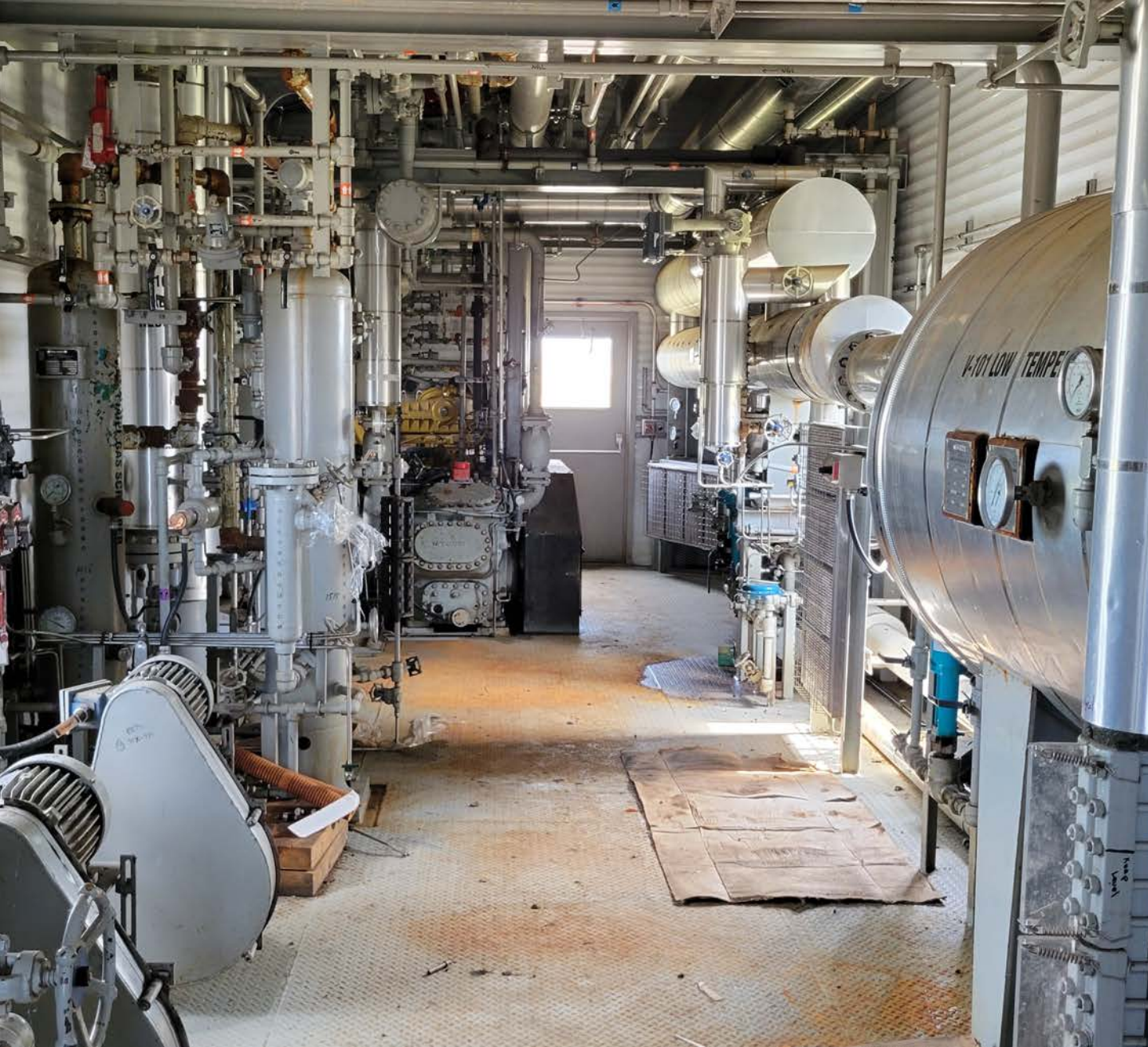




#1957

5-15 MMSCFD 600# Refrigeration Plant

FOR IMMEDIATE SALE



Clean, 30% of NEW price, and ready to go today! This plant will extract liquids flawlessly from 5-15 MMSCFD of gas. It was built in 2005, dismantled and reconditioned in 2017, however it has not been turned on since. No liquid spills or leaks! This modern, full 600# plant, features an oversized low temperature separator and more uniquely, an engine driven compressor configuration utilizing a remanufactured CAT 3306TA engine.

Please contact us with your conditions and gas composition analysis so we can help you size it for your application. Noteworthy to your evaluation is knowing that this asset is owned by a company who has the expertise (and built-in knowledge) to support your engineering evaluation – potentially saving you thousands in engineering costs, hundreds of thousands in build costs, and months in schedule time.

FOR IMMEDIATE SALE

#1957 5-15 MMSCFD 600# Refrigeration Plant



Condition	Reconditioned
Manufactured	2005 by Toromont Process
Location	Grande Prairie, Alberta
Status	Dismantled, staged, and ready for immediate shipment
Registration	U-Stamped Vessels, in Canada CRN's for AB use
Service	Sweet
Refrigeration System	Mycom P8WB c/w 203HP Natural Gas Engine
Chiller & Surge Drum	Chiller: 14"x19', 270psi (Tubeside, 1415 psi @ 66C) Surge Drum: 16"x15", 270 psi.
Low Temp Separator	38.5"ID x 10' SS, 1415psi
Gas/Gas Exchanger	12" x 30', 2 units in series. 270psi shell side, 1415psi tube side
Condensate Stabilizer	Stabilizer 12" OD x 48' S/S, complete with 2 beds of Carbon Steel Pall Rings
De-ethanizer	8"/12" x 30', 350psi.
Building Dimensions	44' x 15' x 17'3"
Package Comments	Unit built by Toromont (Enerflex) and process simulation & package documentation including layout drawings are available.



Take a 3D walkthrough at <https://bit.ly/3kyEAe6>



CAT 3306TA (203HP) Engine driving Mycom Reciprocating Compressor – Fuel gas can be utilized from 2 skid connections; at the outlet of the gas/gas exchanger, or pipeline gas



Engine was replaced on warranty and is stored in mineral oil.





Duplex positive displacement pumps c/w HOA's as part of a comprehensive electrical package



500,000BTU/Hr Glycol Regeneration system c/w ACL 5100 CSA Approved Burner Management System



Low Temp Separator and plenty of boxed spare parts and consumables





Altronic DE-2500 control panel (bottom picture, and all vessels U-Stamped and available registration for all other Canadian provinces)



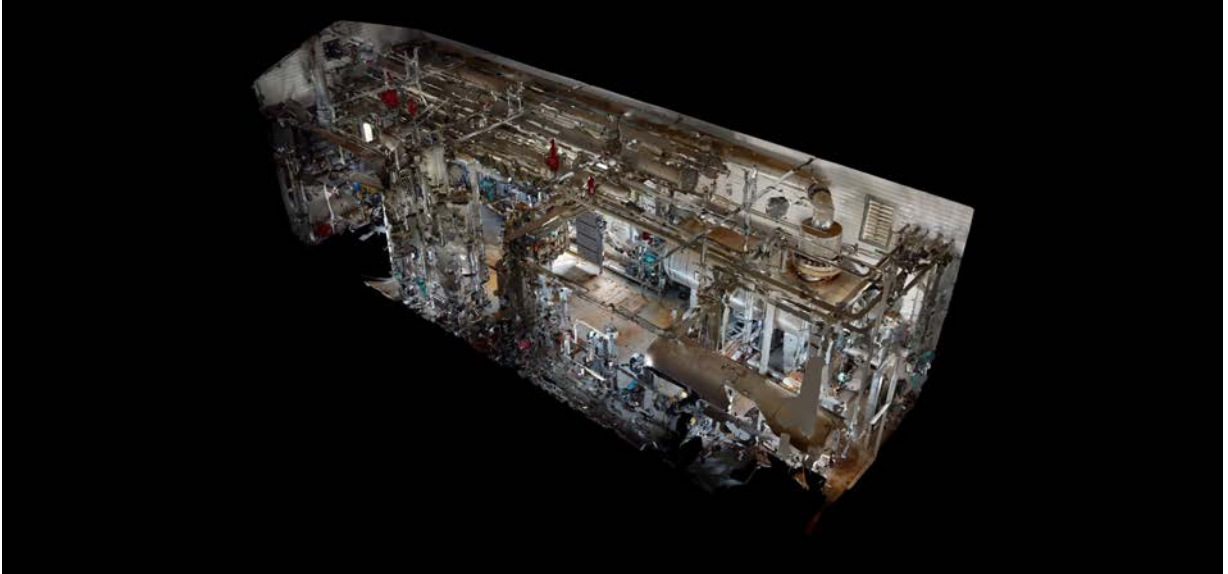
1.9MMBTU/Hr 1440psig Gas/Gas Exchanger



Located in Debolt, AB – disconnected and ready to be redeployed immediately



Condensate fin tube cooler for cooling hydrocarbon liquid from the tower before being sent for condensate storage



Take a 3D walkthrough at <https://bit.ly/3kyEAe6>