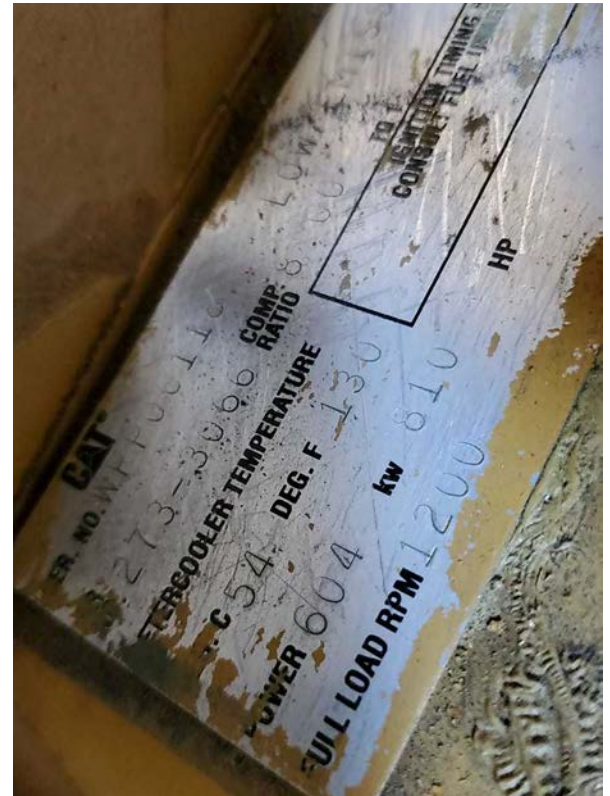


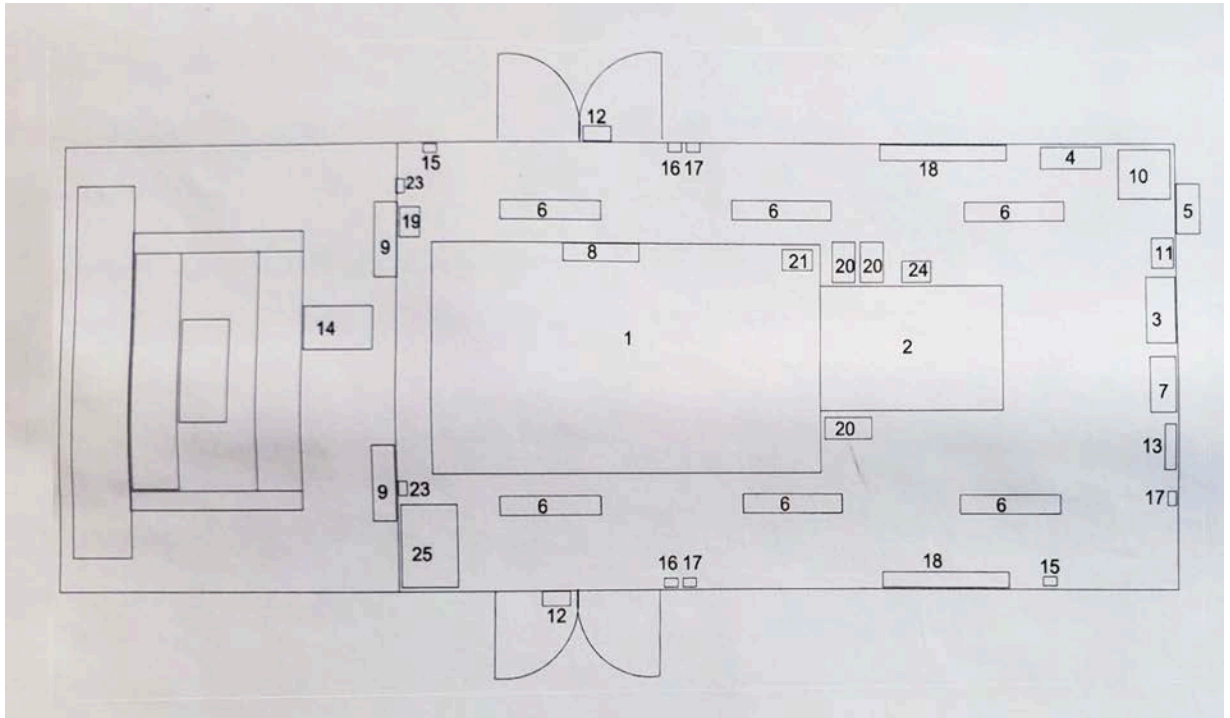
U279 550kW CAT G3512LE Generator Package



Condition	New / Reconditioned
Manufacturer	Belair Power in 2013
Location	North East British Columbia
Availability	Immediate
Driven	Kato 550kW 480V/3 Phase/60Hz
Driver	Caterpillar Natural Gas G3512LE 810HP 1200RPM Has not been in service since zero hour overhaul
Fuel Usage	At full generator load (550KW) the theoretical fuel usage, based on 905 LHV and CAT engine specifications is 144,768 scfd. Fuel gas analysis required to verify for specific application
Building Notes	Skidded and Housed in gable style oilfield building and fully wired to Junction Boxes c/w 25HP Radiator fan motor, 24V engine start, exhaust fans, natural gas heaters, CAT engine control panel, generator control panel, main disconnect, interior/exterior lights







ITEM	Description	QTY.,
1	CAT G3512LE Engine	1
2	600kw 480v 3P Alternator	1
3	Generator Circuit Breaker/ Control Panel	1
4	120-208 125 Amp 3Ph load center*	1
5	Customer Control Junction Box	1
6	Dual lamp Flourecent Lights	6
7	Engine Control Panel	1
8	3KW Engine Block Heaters	1
9	24" Exhaust Fan	1
10	15kva Transformer 480-120/208	1
11	Transformer Disconnect 30A 600V	2
12	70w Exterior Light	2
13	9W emergency lighting	1
14	Radiator c/w 25hp 480V Motor *	1
15	Thermostat for Exhaust fan	2
16	Light Switch	2
17	120v duplex recpt.	3
18	24"X 24" Catadyne Heater	2
19	Rad Fan Motor Starter	2
20	Battery Charger/ Engine Junction Box	1
21	24 V Engine Starter	2
22	Batteries	2
23	Exhaust Fan Disconnect c/w OL Heaters	3
24	Rad Motor Disconnect 60A 600V	1
25	25 Gallon Oil Day tank	1

