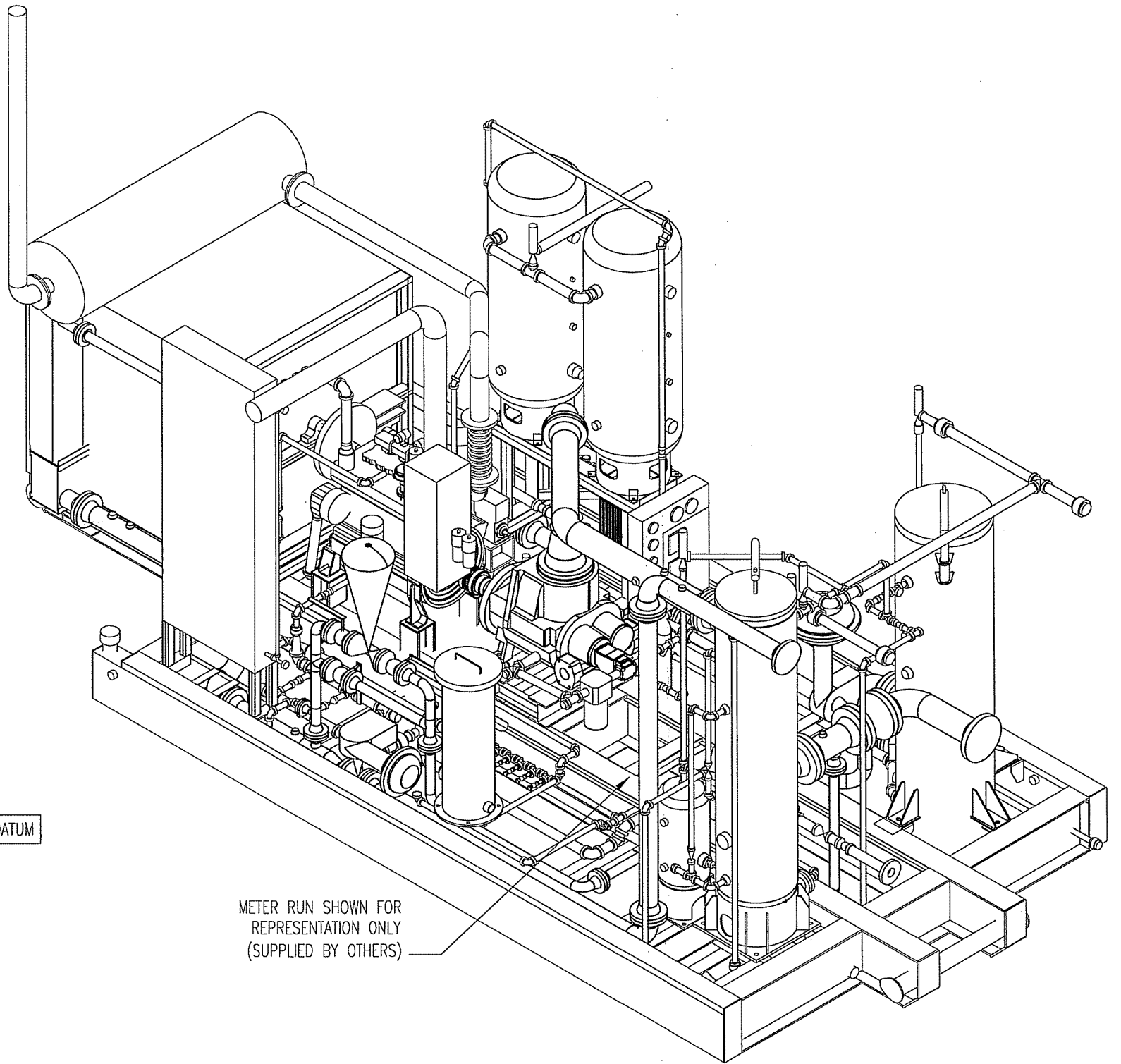


END VIEW



ISOMETRIC VIEW

Nozzle	Size	Nozzle Description	Nozzle	Size	Nozzle Description
N6	3" NPT	WASTE GLYCOL TANK SUCKOUT	N14	5" TUBING	ENGINE AIR INTAKE
N5	3" NPT	WASTE ENGINE OIL TANK SUCKOUT	N13	4" TUBING	ENGINE EXHAUST
N4	1"-3000# NPT	LUBE OIL DRAIN	N9	2"-3000# NPT	UTILITY RELIEF DISCHARGE
N3	2"-300# ANSI RF	FUEL/START GAS INLET	N8	2"-3000# NPT	RELIEF GAS OUTLET
N2	4"-150# ANSI RF	UNIT DISCHARGE	N7	1"-3000# NPT	DRAIN TANK
N1	6"-300# ANSI RF	UNIT SUCTION			

L.O.P.

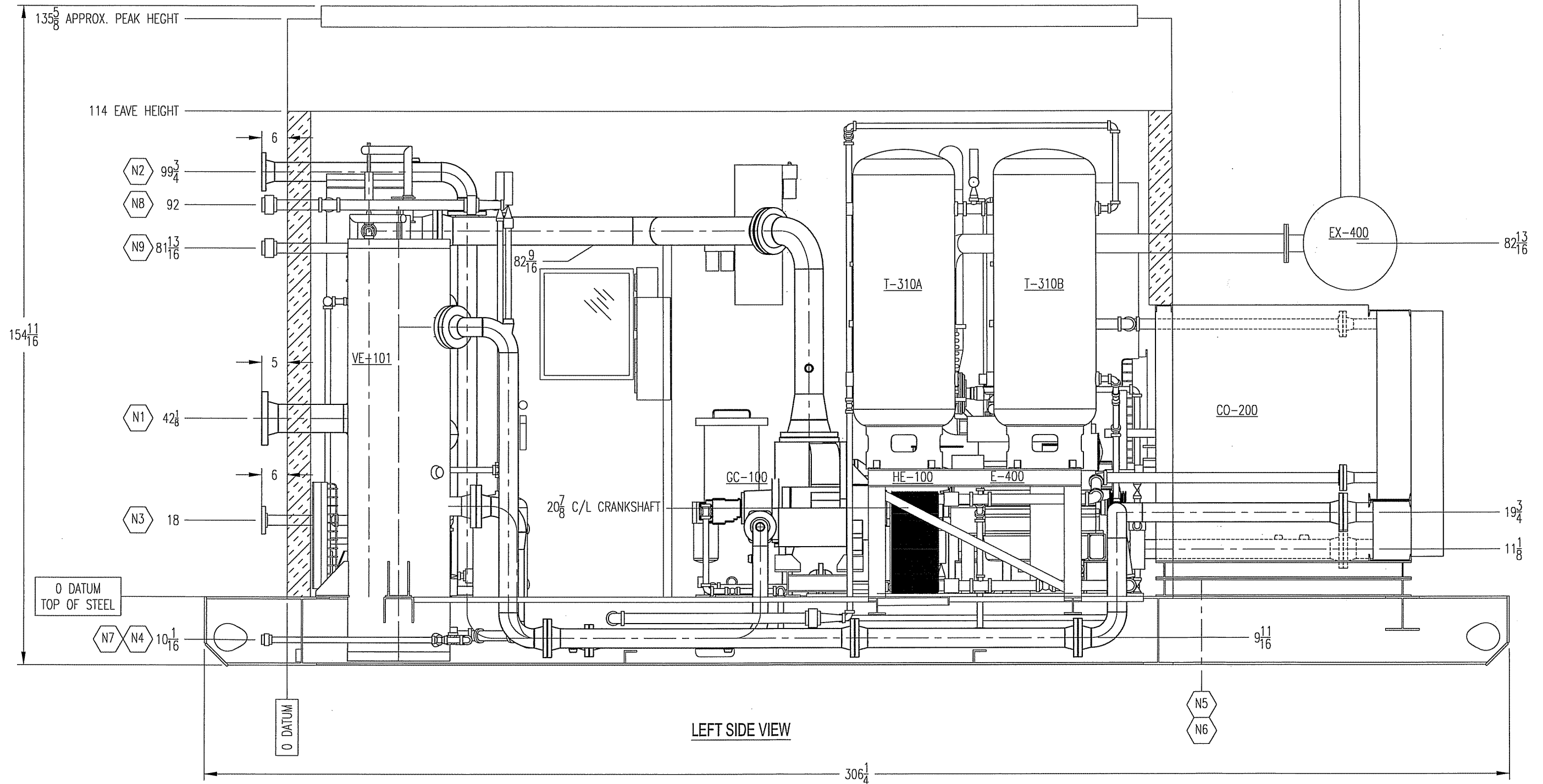
5218-68 Avenue, Edmonton, AB T6B 2X7
Phone: (780) 463-7001 Fax: (780) 463-7661

The information contained herein is confidential property of L.O.P. Inc. and is not for publication. The information is issued on the understanding that no part thereof shall be copied or communicated to a third party without authorization in writing from L.O.P. Inc.

REV	DATE	DESCRIPTION	BY	CHK	APP
1	11/12/2006	AS-BUILT	GDB	GDB	GDB
0	10/07/06	ISSUED FOR CONSTRUCTION	GDB	GDB	SL
C	28/03/06	REVISED PER CUSTOMER COMMENTS	GDB	GDB	SL
B	16/03/06	RE-ISSUED FOR APPROVAL	GDB	GDB	SL
A	02/17/06	ISSUED FOR APPROVAL	GDB	GDB	GDB

PROJECT:	95HP LEROI HG24 ROTARY SCREW GAS COMPRESSOR SKID GENERAL ARRANGEMENT - ISOMETRIC/END VIEW				
CUSTOMER:	CONOCOPHILLIPS c/o VECO CANADA ALLIANCE				
DATE:	FEBRUARY 17, 2006	DRAWN BY:	GDB	CHECKED BY:	GDB
APPROVED BY:					GDB
SCALE:	1/2" = 1'-0"	DRAWING NUMBER:	5725-0004-01C		REVISION:
					0

170 EXHAUST STACK HEIGHT
MIN. 1.5x EAVE



LEFT SIDE VIEW

SIDE TANK NOT SHOWN
AS BUILT DIMENSIONS MAY BE FORCED

Nozzle	Size	Nozzle Description	Nozzle	Size	Nozzle Description
N6	3" NPT	WASTE GLYCOL TANK SUCKOUT	N15	1"-3000# NPT	BLOWCASE DRAIN
N5	3" NPT	WASTE ENGINE OIL TANK SUCKOUT	N14	5" TUBING	ENGINE AIR INTAKE
N4	1"-3000# NPT	LUBE OIL DRAIN	N13	4" TUBING	ENGINE EXHAUST
N3	2"-300# ANSI RF	FUEL/START GAS INLET	N9	2"-3000# NPT	UTILITY RELIEF DISCHARGE
N2	4"-150# ANSI RF	UNIT DISCHARGE	N8	2"-3000# NPT	RELIEF GAS OUTLET
N1	6"-300# ANSI RF	UNIT SUCTION	N7	1"-3000# NPT	DRAIN TANK

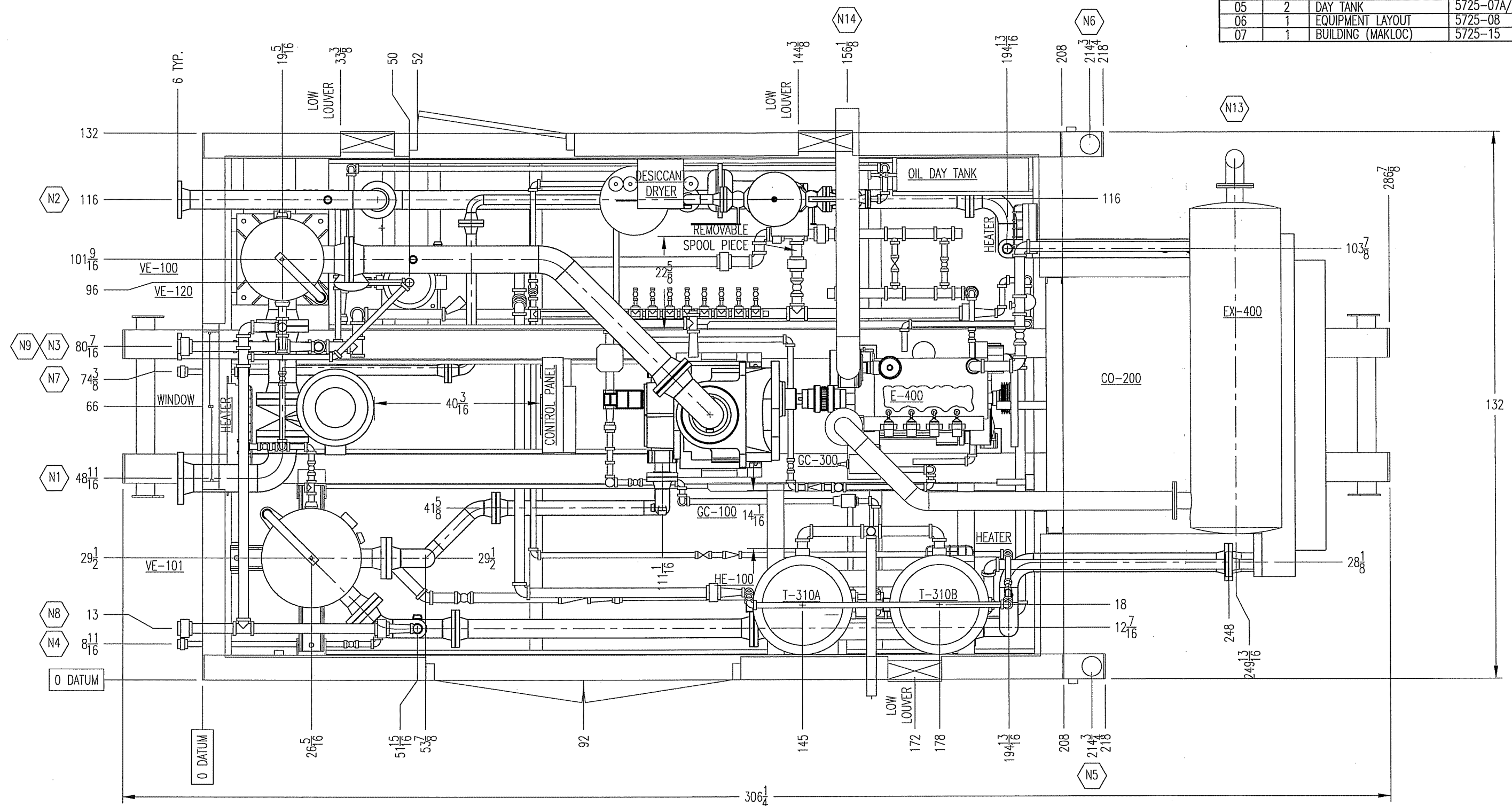
L.O.P.
5218-68 Avenue, Edmonton, AB T6B 2X7
Phone: (780) 463-7001 Fax: (780) 463-7661

The information contained herein is confidential property of L.O.P. Inc. and is not for publication. The information is issued on the understanding that no part thereof shall be copied or communicated to a third party without authorization in writing from L.O.P. Inc.

REV	DATE	DESCRIPTION	BY	CHK	APP
1	11/12/2006	AS-BUILT	GDB	GDB	GDB
0	10/07/06	ISSUED FOR CONSTRUCTION	GDB	GDB	SL
C	28/03/06	REVISED PER CUSTOMER COMMENTS	GDB	GDB	SL
B	16/03/06	RE-ISSUED FOR APPROVAL	GDB	GDB	SL
A	02/17/06	ISSUED FOR APPROVAL	GDB	GDB	GDB

PROJECT:	95HP LEROI HG24 ROTARY SCREW GAS COMPRESSOR SKID GENERAL ARRANGEMENT - ELEVATION VIEW				
CUSTOMER:	CONOCOPHILLIPS c/o VECO CANADA ALLIANCE				
DATE:	FEBRUARY 17, 2006	DRAWN BY:	GDB	CHECKED BY:	GDB
APPROVED BY:	GDB				GDB
SCALE:	1/2" = 1'-0"	DRAWING NUMBER:	5725-0004-01B		REVISION:
					1

ITEM	SHEETS	DESCRIPTION	DRAWING NO.
01	4	P&ID	5725-02A TO D
02	3	SKID	5725-03A/B/C
03	8	SPOOLS	5725-05A TO U
04	1	SUB-SKID	5725-04
05	2	DAY TANK	5725-07A/B
06	1	EQUIPMENT LAYOUT	5725-08
07	1	BUILDING (MAKLOC)	5725-15



TOP VIEW

- NOTES:
1. ALL DIMENSIONS ARE IN INCHES.
 2. NOT ALL THREADED PIPE IS SHOWN.
 3. THREADED PIPE CONNECTIONS ARE FOR REFERENCE ONLY AND WILL BE CONFIRMED ON AS-BUILT DRAWINGS.

AS BUILT DIMENSIONS MAY BE FORCED

Nozzle	Size	Nozzle Description	Nozzle	Size	Nozzle Description
N6	3" NPT	WASTE GLYCOL TANK SUCKOUT	N14	5" TUBING	ENGINE AIR INTAKE
N5	3" NPT	WASTE ENGINE OIL TANK SUCKOUT	N13	4" TUBING	ENGINE EXHAUST
N4	1"-3000# NPT	LUBE OIL DRAIN	N9	2"-3000# NPT	UTILITY RELIEF DISCHARGE
N3	2"-300# ANSI RF	FUEL/START GAS INLET	N8	2"-3000# NPT	RELIEF GAS OUTLET
N2	4"-150# ANSI RF	UNIT DISCHARGE	N7	1"-3000# NPT	DRAIN TANK
N1	6"-300# ANSI RF	UNIT SUCTION			

L.O.P.

5218-68 Avenue, Edmonton, AB T6B 2X7
Phone: (780) 463-7001 Fax: (780) 463-7661

The information contained herein is confidential property of L.O.P. Inc. and is not for publication. The information is issued on the understanding that no part thereof shall be copied or communicated to a third party without authorization in writing from L.O.P. Inc.

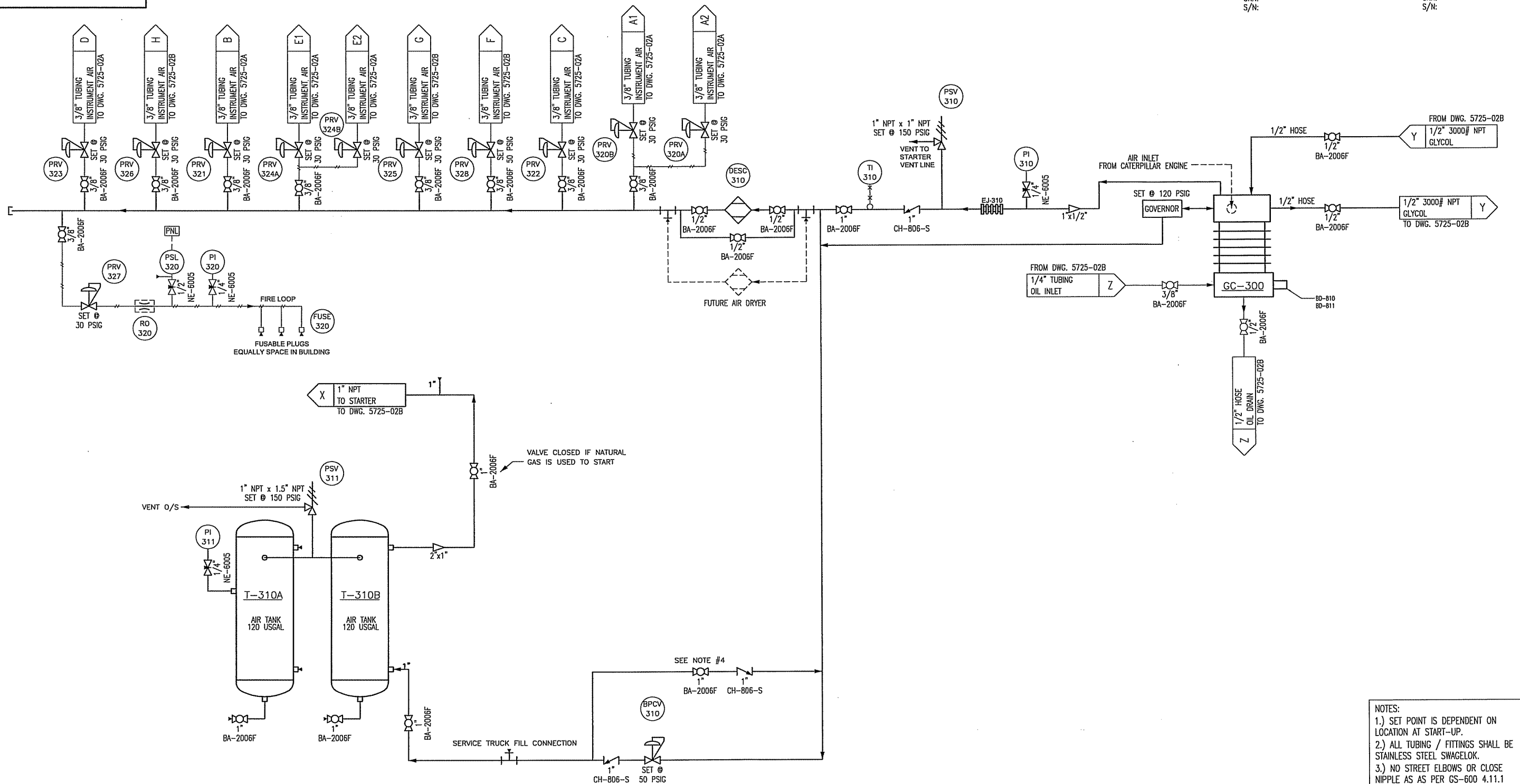
REV	DATE	DESCRIPTION	BY	CHK	APP	GDB	GDB	GDB	PROJECT:	DATE:	DRAWN BY:	CHECKED BY:	APPROVED BY:
1	11/12/2006	AS-BUILT	GDB	GDB	GDB				95HP LEROI HG24 ROTARY SCREW GAS COMPRESSOR SKID GENERAL ARRANGEMENT - PLAN VIEW	FEBRUARY 17, 2006	GDB	GDB	GDB
0	10/07/06	ISSUED FOR CONSTRUCTION	GDB	GDB	SL				CUSTOMER:				
C	28/03/06	REVISED PER CUSTOMER COMMENTS	GDB	GDB	SL				CONOCOPHILLIPS c/o VECO CANADA ALLIANCE				
B	16/03/06	RE-ISSUED FOR APPROVAL	GDB	GDB	SL								
A	02/17/06	ISSUED FOR APPROVAL	GDB	GDB	GDB								

SCALE: 1/2" = 1'-0" DRAWING NUMBER: 5725-0004-01A

GC-300
INSTRUMENT AIR COMPRESSOR
BENDIX MODEL 550
19 SCFM @ 1800 RPM
MAWP: 150 PSIG

T-310A
START AIR TANK
MANCHESTER TANK, 120 USGAL (454 LITER)
24" OD X 75" OAH
MAWP: 200 PSIG
CRN:
S/N:

T-310B
START AIR TANK
MANCHESTER TANK, 120 USGAL (454 LITER)
24" OD X 75" OAH
MAWP: 200 PSIG
CRN:
S/N:



- NOTES:
- 1.) SET POINT IS DEPENDENT ON LOCATION AT START-UP.
 - 2.) ALL TUBING / FITTINGS SHALL BE STAINLESS STEEL SWAGelok.
 - 3.) NO STREET ELBOWS OR CLOSE NIPPLE AS PER GS-600 4.11.1
 - 4.) VALVE TO BE OPEN ON START UP, IN ORDER TO CHARGE INSTRUMENT AIR SYSTEM. CLOSE VALVE AFTER START UP.

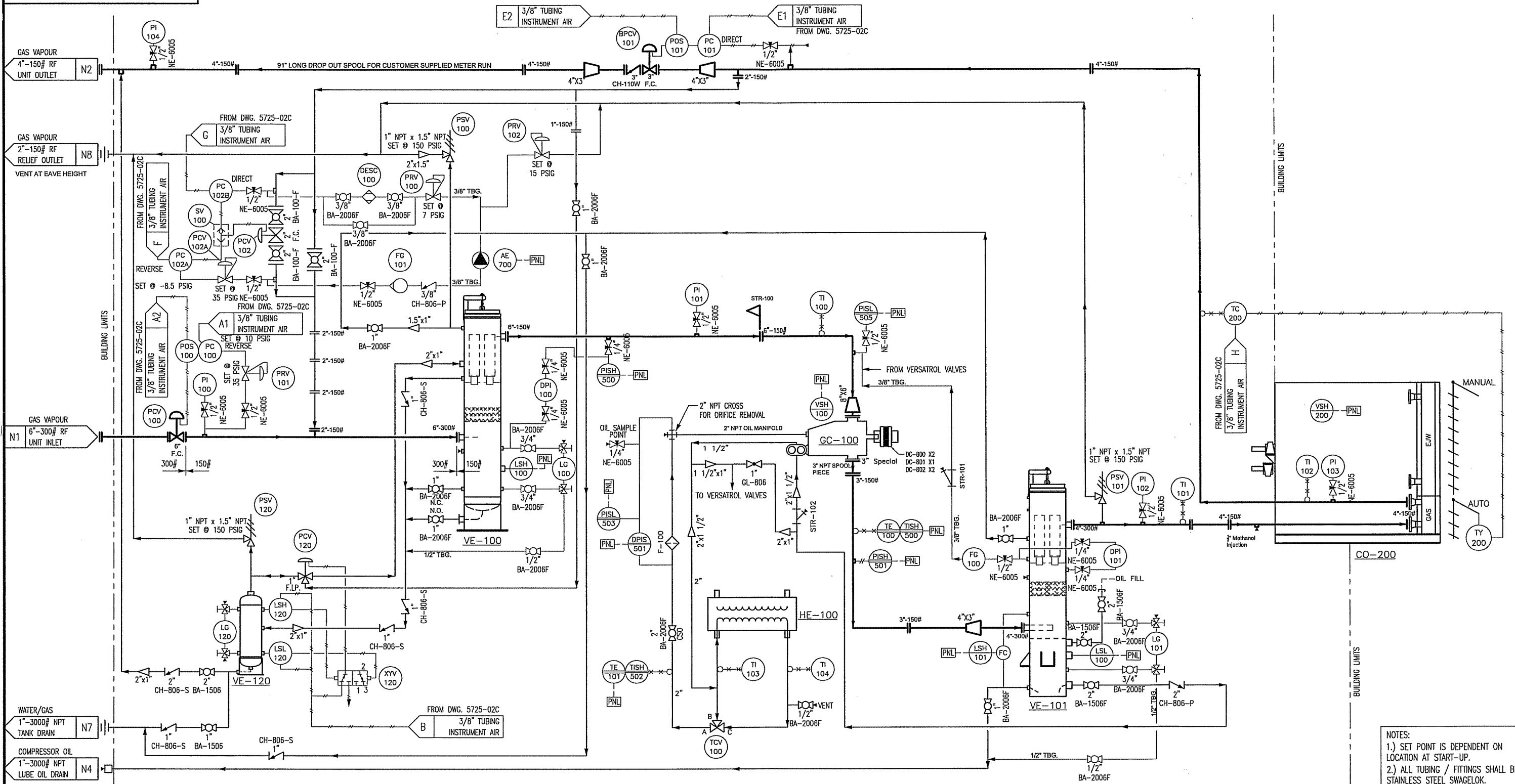
LEGEND

	THERMOWELL		SIGNAL TO CONTROL PANEL
	LOCAL INDICATION		INDICATION AND SIGNAL IN CONTROL PANEL
	INDICATES TUBING		

REFERENCE:
GILBY 4-20-40-2 W5M Job # 40090-4310

Nozzle			Size			Nozzle Description			Nozzle			Size			Nozzle Description		
L.O.P.																	
5218-68 Avenue, Edmonton, AB T6B 2X7 Phone: (780) 463-7001 Fax: (780) 463-7661																	
<small>The information contained herein is confidential property of L.O.P. Inc. and is not for publication. The information is issued on the understanding that no part thereof shall be copied or communicated to a third party without authorization in writing from L.O.P. Inc.</small>																	
0	23/05/06	ISSUED FOR CONSTRUCTION	GDB	GDB	SL	PROJECT: 95HP LEROI HG24 ROTARY SCREW GAS COMPRESSOR PACKAGE INSTRUMENT AIR P&ID DRAWING											
B	28/03/06	REVISED PER CUSTOMER COMMENTS	GDB	GDB	SL	CUSTOMER: CONOCOPHILLIPS CANADA c/o VECO CANADA ALLIANCE											
1	11/12/2006	AS-BUILT	GDB	GDB	GDB	DATE: MARCH 10, 2006	DRAWN BY: GDB	CHECKED BY: GDB	APPROVED BY: SL								
REV	DATE	DESCRIPTION	BY	CHK	APP	SCALE: N.T.S.	DRAWING NUMBER: 5725-0004-02C	REVISION: 1									

VE-100 INLET COALESCE VESSEL 20"OD x 82" S/S MAWP: -15/150 PSIG @ 300°F	VE-101 OIL COALESCE VESSEL 24"OD x 99" B/F MAWP: 400 PSIG @ 300°F	VE-120 BLOWCASE VESSEL 12.75"OD x 19" S/S MAWP: 375 PSIG @ 150°F	GC-100 ROTARY SCREW COMPRESSOR Leroi MODEL HG24118 MAWP: 250 PSIG OPERATING SPEED: 500-3600 RPM	CO-200 PROCESS COOLER AIR-X MODEL 48VI A/C SECTION: 150 PSIG @ 350°F EJW: 15 PSIG @ 350°F	HE-100 OIL COOLER PLATE EXCHANGER ALFA LAVAL MODEL CB76-100H-T09 COPPER BRAZED 316SS PLATES MAWP: 460 PSIG @ 350°F
---	---	--	--	--	---



NOTES:
1.) SET POINT IS DEPENDENT ON LOCATION AT START-UP.
2.) ALL TUBING / FITTINGS SHALL BE STAINLESS STEEL SWAGelok.
3.) NO STREET ELBOWS OR CLOSE NIPPLE AS PER GS-600 4.11.1

LEGEND

	○-x-○ THERMOWELL		○ SIGNAL TO CONTROL PANEL
	○ LOCAL INDICATION		— INDICATES TUBING
	○ INDICATION AND SIGNAL IN CONTROL PANEL		

Nozzle	Size	Nozzle Description
N8	2"-3000# NPT	RELIEF GAS OUTLET
N7	1"-3000# NPT	DRAIN TANK
N4	1"-3000# NPT	COMPRESSOR LUBE OIL DRAIN
N2	4"-150# RF	UNIT GAS OUTLET
	8"-150# RF	UNIT GAS INLET

L.O.P.

5218-68 Avenue, Edmonton, AB T6B 2X7
Phone: (780) 463-7001 Fax: (780) 463-7661

The information contained herein is confidential property of L.O.P. Inc. and is not for publication. The information is issued on the understanding that no part thereof shall be copied or communicated to a third party without authorization in writing from L.O.P. Inc.

REV	DATE	DESCRIPTION	BY	CHK	APP
1	11/12/2006	AS-BUILT	GDB	GDB	GDB
0	10/07/06	ISSUED FOR CONSTRUCTION	GDB	GDB	SL

PROJECT: 95HP LEROI HG24 ROTARY SCREW GAS COMPRESSOR PACKAGE
MAIN P&ID DRAWING
CUSTOMER: CONOCOPHILLIPS CANADA c/o VECO CANADA ALLIANCE
DATE: FEBRUARY 17, 2006 DRAWN BY: GDB CHECKED BY: GDB APPROVED BY: SL
SCALE: N.T.S. DRAWING NUMBER: 5725-0004-02A REVISION: 1

REFERENCE:
VECO Job # 40090-4310

E-400
ENGINE
CAT MODEL G3304NA
RATED: 95HP @ 1800 RPM, SEA LEVEL
ALTRONIC III IGNITION

EX-400
ENGINE MUFFLER
EXCEL MODEL EXHDP5-4-E-C-AS-BLK
ALUMINIZED STEEL
4" INLET / 4" OUTLET
SOUND ATTENUATION: 48-58 dBA

CO-200
PROCESS COOLER
AIR-X MODEL 48VI
A/C SECTION: 150 PSIG @ 350°F
EJW: 15 PSIG @ 350°F

HE-100
OIL COOLER PLATE EXCHANGER
ALFA LAVAL MODEL CB76-100H-T09
COPPER BRAZED 316SS PLATES
MAWP: 460 PSIG @ 350°F

P-130
CHEMICAL INJECTION PUMP
TEXSTEAM SERIES MX3
3/8" PLUNGER

H-300
BUILDING HEATER
CATADYNE MODEL W24X24
NAUTRAL GAS, 12V START
RATED: 16,000 BTU (4.68 kW)

H-301/302
BUILDING HEATER
CATADYNE MODEL W12X24
NAUTRAL GAS, 12V START
RATED: 8,000 BTU (2.34 kW)

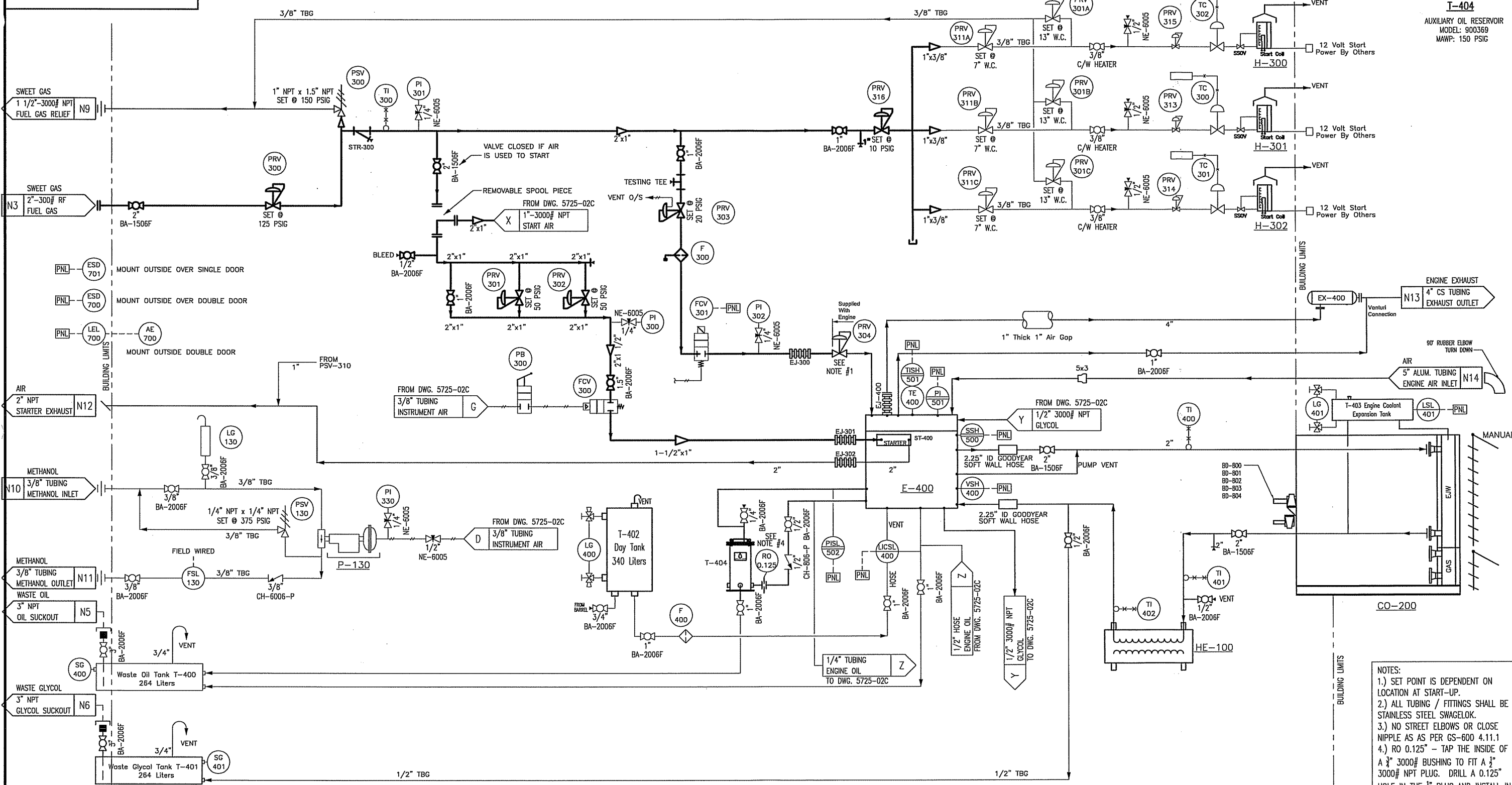
T-400
WASTE OIL TANK
CAPACITY: 70 USGAL (264 LITER)

T-401
WASTE GLYCOL TANK
CAPACITY: 70 USGAL (264 LITER)

T-402
ENGINE OIL DAY TANK
CAPACITY: 90 USGAL (340 LITER)
P/N: 340LDT

T-403
GLYCOL EXPANSION TANK
CAPACITY: 10 USGAL (38 LITER)

T-404
AUXILIARY OIL RESERVOIR
MODEL: 900369
MAWP: 150 PSIG



- NOTES:
- 1.) SET POINT IS DEPENDENT ON LOCATION AT START-UP.
 - 2.) ALL TUBING / FITTINGS SHALL BE STAINLESS STEEL SWAGelok.
 - 3.) NO STREET ELBOWS OR CLOSE NIPPLE AS PER GS-600 4.11.1
 - 4.) RO 0.125" - TAP THE INSIDE OF A 3/4" 3000# BUSHING TO FIT A 1/2" 3000# NPT PLUG. DRILL A 0.125" HOLE IN THE 1/2" PLUG AND INSTALL IN 3/4" BUSHING
 - 5.) VENT ALL GAS REGULATORS OUTSIDE

LEGEND

	THERMOWELL		SIGNAL TO CONTROL PANEL
	LOCAL INDICATION		INDICATION AND SIGNAL IN CONTROL PANEL
	INDICATES TUBING		

Nozzle	Size	Nozzle Description	Nozzle	Size	Nozzle Description
N11	3/8" TUBING	METHANOL OUTLET			
N10	3/8" TUBING	METHANOL INLET			
N9	2"-3000# NPT	UTILITY RELIEF DISCHARGE			
N6	3" NPT	WASTE GLYCOL SUCKOUT	N14	5" TUBING	ENGINE AIR INTAKE
N5	3" NPT	WASTE ENGINE OIL SUCKOUT	N13	4" TUBING	ENGINE EXHAUST
N3	2"-300# RF	FUEL/START GAS INLET	N12	2" NPT	STARTER EXHAUST

L.O.P.

5218-68 Avenue, Edmonton, AB T6B 2X7
Phone: (780) 463-7001 Fax: (780) 463-7661

The information contained herein is confidential property of L.O.P. Inc. and is not for publication. The information is issued on the understanding that no part thereof shall be copied or communicated to a third party without authorization in writing from L.O.P. Inc.

REV	DATE	DESCRIPTION	BY	CHK	APP
1	11/12/2006	AS-BUILT	GDB	GDB	GDB
0	10/07/06	ISSUED FOR CONSTRUCTION	GDB	GDB	SL

REFERENCE:
GILBY 4-20-40-2 W5M Job # 40090-4310

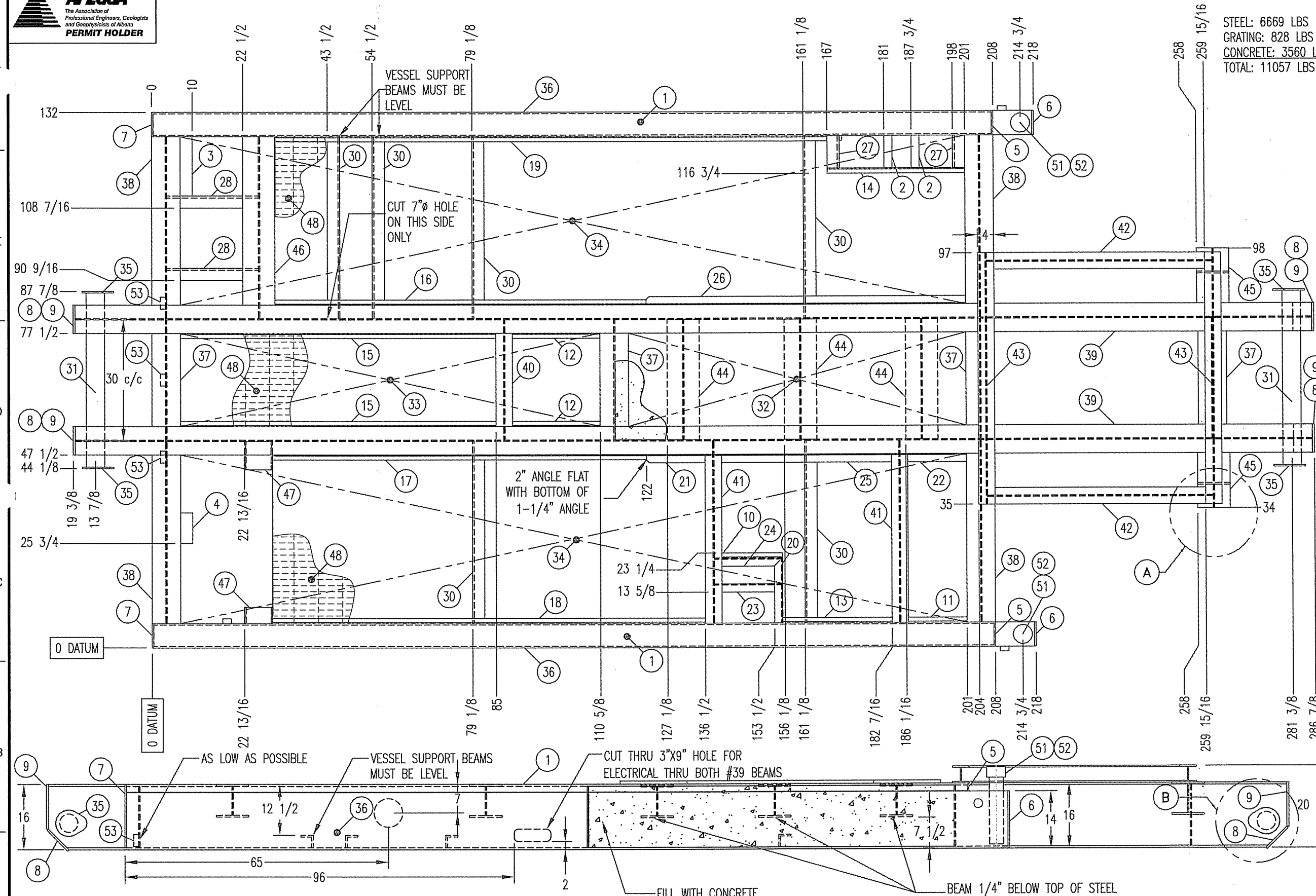
PROJECT:	95HP LEROI HG24 ROTARY SCREW GAS COMPRESSOR PACKAGE
CUSTOMER:	CONOCOPHILLIPS CANADA c/o VECO CANADA ALLIANCE
DATE:	MARCH 08, 2006
DRAWN BY:	GDB
CHECKED BY:	GDB
APPROVED BY:	SL
SCALE:	N.T.S.
DRAWING NUMBER:	5725-0004-02B
REVISION:	1

SKID WEIGHT

STEEL: 6669 LBS
GRATING: 828 LBS
CONCRETE: 3560 LBS
TOTAL: 11057 LBS

BILL OF MATERIAL

ITEM	QTY	DESCRIPTION	LENGTH
1	2	CSXB.2	207 1/4
2	2	FB2x1/4	8
3	1	FB3x1/2	14 9/16
4	1	FB3x3/8	7 1/2
5	2	FB6x3/8	2
6	2	FB6x3/8	14
7	2	FB6x3/8	16
8	4	FB7x1/2	7 1/4
9	4	FB7x1/2	10 7/8
10	1	L1 1/4X1 1/4X1/4	15
11	1	L1 1/4X1 1/4X1/4	14 1/2
12	2	L1 1/4X1 1/4X1/4	21 5/8
13	1	L1 1/4X1 1/4X1/4	26 15/16
14	1	L1 1/4X1 1/4X1/4	34
15	2	L1 1/4X1 1/4X1/4	78
16	1	L1 1/4X1 1/4X1/4	91 1/2
17	1	L1 1/4X1 1/4X1/4	92 3/16
18	1	L1 1/4X1 1/4X1/4	106 11/16
19	1	L1 1/4X1 1/4X1/4	136 1/2
20	1	L2X2X1/4	16
21	1	L2X2X1/4	16 1/2
22	1	L2X2X1/4	16 9/16
23	1	L2X2X1/4	16 5/8
24	1	L2X2X1/4	16 7/8
25	1	L2X2X1/4	45 15/16
26	1	L2X2X1/4	79
27	2	L3X3X1/2	8
28	2	L3X3X1/2	22 11/16
29	-	-	-
30	6	L3X3X3/8	44 7/8
31	2	PIPES80-4A106	43
32	1	PL-1/4 X 83 3/8 X 23	83 3/8
33	1	PL-1/8 X 103 5/8 X 23	103 5/8
34	2	PL-1/8 X 194 X 41 1/2	194
35	4	SMALL TEARDROP	7 3/4
36	2	HSS14X6X1/4	217 1/4
37	4	W16X40	29 11/16
38	4	W16X40	44 7/8
39	2	W16X40	305 1/4
40	1	W4X13	29 11/16
41	2	W4X13	44 7/8
42	2	W4X13	55 11/16
43	2	W4X13	62
44	3	WBX31	29 11/16
45	2	WBX31	16 7/8
46	1	WBX31	44 7/8
47	1 PR	MAKUS200HPOLSEP	-
48	1135 SQ FT	GR1X3/16	-
49	-	-	-
50	-	-	-
51	2	PIPES80-3A106	18
52	2	CAP, THRD 3000LB, 3"	-
53	3	CPLG, HALF THRD, 3000LB, 1.5"	-
54	8	CPLG, HALF THRD, 3000LB, 1"	-
TOTAL WEIGHT: 6668.76			



- NOTES:
1. ALL STEEL FLAT ON TOP UNLESS OTHERWISE STATED
 2. SEE DWG# 5725-03B FOR ITEM# 47
 3. SEE DETAILS ON DWG#5725-03B
 4. SEE DWG# 5725-03C FOR SIDE TANKS
 5. 24.7 CUBIC FEET OF CONCRETE REQUIRED

5725-0002



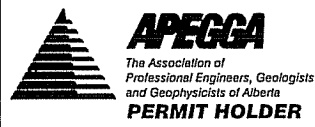
5218-68 Avenue, Edmonton, AB T6B 2X7
Phone: (780) 463-7001 Fax: (780) 463-7661

The information contained herein is confidential property of L.O.P., Inc. and is not for publication. The information is issued on the understanding that no part thereof shall be copied or communicated to a third party without authorization in writing from L.O.P., Inc.

PROJECT: 95HP LEROI HG24 ROTARY SCREW GAS COMPRESSOR SKID DRAWING	
CUSTOMER: CONOCOPHILLIPS c/o VECO CANADA ALLIANCE	
DATE: MARCH 27, 2006	DRAWN BY: APB CHECKED BY: GDB APPROVED BY: SL
SCALE: NTS	DRAWING NUMBER: 5725-03A REVISION: 0

REV	DATE	DESCRIPTION	BY	CHK	APP
0	05/04/06	ISSUED FOR CONSTRUCTION	APB	GDB	SL

Nozzle	Size	Nozzle Description	Nozzle	Size	Nozzle Description



BUILDING

BUILDING TYPE:

- Self-framing Gable style
- 4:12 Roof Slope
- Size 11'-0"W x 17'-4"L x 9'-6"H
- Sound Attenuating Package

WALLS AND ROOF:

- Wall Insulation: R12 c/w Gyprock and AF-730 (1" thick)
- Roof Insulation: R12 c/w Gyprock and AF-730 (1" thick)
- Wall Exterior Panel: 22 Ga. Pre-Painted Steel, Colour: Stone Grey (QC305)
- Roof Exterior Panel: 22 Ga. Pre-Painted Steel, Colour: Stone Grey (QC-305)
- Wall Interior Liner: 20 Ga. Perforated Aluminum, Colour: White
- Roof Interior Liner: 20 Ga. Perforated Aluminum, Colour: White
- Wall Trim: 22 Ga. Pre-Painted Steel, Colour: Bright Red (QC-386)
- Roof Trim: 22 Ga. Per-Painted Steel, Colour: Bright Red (QC-386)
- Wall Vapor Barrier: 6 mil. Poly
- Roof Vapor Barrier: 6 mil. Poly
- Ice Rakes included, Length: 208" (each side)
- Eaves Troughs & Downspouts: No

VENTILATION:

- Three (3) Louvers included, Size: 18" x 18"
- Closure Type: Westvent Manual Slide
- One (1) Full length ridge vent, 16'
- **Sound hoods required on all ventilation openings**

WINDOWS:

- One (1), Size: 3' x 3' double glazed sliding, bugscreen

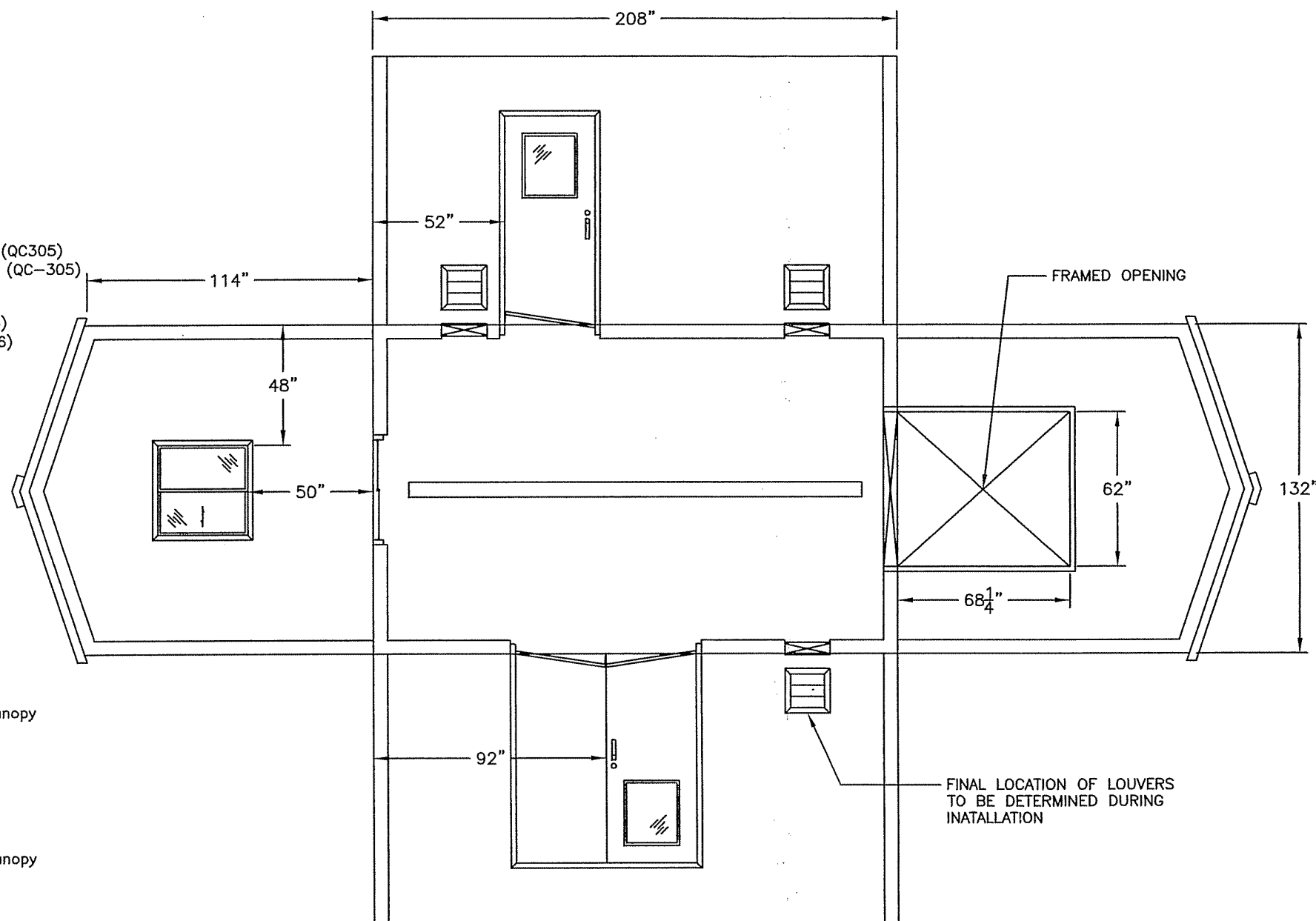
SINGLE DOORS:

- One (1), Size: 3' x 7'
- IWG Window included, Size: 24"x24"
- C/W Panic Hardware, Lock, Chain, Weather Stripping, Threshold, Canopy
- Door Colour: Bright Red (QC-386)
- Canopy Colour: Bright Red (QC-286)

DOUBLE DOORS:

- One (1), Size: 6' x 7'
- IWG Window included, Size: 24"x24" (active section only)
- C/W Panic Hardware, Lock, Chain, Weather Stripping, Threshold, Canopy
- Door Colour: Bright Red (QC-386)
- Canopy Colour: Bright Red (QC-286)

Makloc Quote Number: RN-06-16



					L.O.P.			PROJECT: 95HP LeRoi HG24 ROTARY SCREW GAS COMPRESSOR PACKAGE BUILDING LAYOUT CLIENT: CONOCOPHILLIPS C/O VECO CANADA ALLIANCE DATE: MAY 01, 2006 SCALE: 1/4" = 1'-0"										
					5218-68 Avenue, Edmonton, AB T6B 2X7 Phone: (780) 463-7001 Fax: (780) 463-7661 <small>The information contained herein is confidential property of L.O.P. Inc. and is not for publication. The information is issued on the understanding that no part thereof shall be copied or communicated to a third party without authorization in writing from L.O.P. Inc.</small>			0	01/05/06	ISSUED FOR CONSTRUCTION	GDB	GDB	GDB	DRAWN BY: GDB CHECKED BY: GDB APPROVED BY: GDB			5725-0000-15	0
NOZZLE	SIZE	NOZZLE DESCRIPTION	NOZZLE	SIZE	NOZZLE DESCRIPTION	REV	DATE	DESCRIPTION	BY	CHK	APP							

Here are the performance values for a HG245 with 1.179 Gear Ratio operating with the following parameters:
 Ratio of Specific Heats: 1.26
 Atmospheric Pressure: 12.2
 Suction Pressure Drop: 0.5
 Inlet Temp: 35
 Discharge Temperature: 180
 Input Speed 1800 RPM
 Can Not Exceed 83 HP

Request 1 Max Discharge allowed with the following suction pressure														
Suction Pressure (PSIG)	Desired Flow (SCFD)	Discharge Pressure	SCFD With Versatrol				Ports				HP With Versatrol			
			0	1	2	3	4	0	1	2	3	4		
-7	468,000	50	346,915	301,816	256,717	215,087	166,346	82	74	68	63	62		
-7	468,000	60	342,421	297,907	253,392	212,301	164,191	90	81	75	69	67		
-7	468,000	70	337,928	293,998	250,067	209,516	162,037	98	88	81	75	73		
-7	468,000	80	333,435	290,088	246,742	206,730	159,882	105	95	87	81	79		
-7	468,000	85	331,189	288,134	245,080	205,337	158,805	109	98	90	84	82		

Items in Yellow are above 83 HP

Request 2 Max Discharge allowed with the following suction pressure														
Suction Pressure (PSIG)	Desired Flow (SCFD)	Discharge Pressure	SCFD With Versatrol				Ports				HP With Versatrol			
			0	1	2	3	4	0	1	2	3	4		
-8.5	468,000	60	224,571	195,377	166,183	139,234	107,682	82	74	68	63	62		
-8.5	468,000	65	222,524	193,596	164,668	137,965	106,700	85	77	71	65	64		
-8.5	468,000	70	220,477	191,815	163,153	136,696	105,719	89	80	74	69	67		
-8.5	468,000	75	218,429	190,033	161,637	135,426	104,737	92	83	76	71	69		
-8.5	468,000	80	216,382	188,252	160,123	134,157	103,755	96	86	80	74	72		
-8.5	468,000	85	214,335	186,471	158,608	132,888	102,774	99	89	82	76	74		
-8.5	468,000	90	212,288	184,691	157,093	131,619	101,792	102	92	85	79	77		
-8.5	468,000	95	210,241	182,910	155,578	130,349	100,811	106	95	88	82	80		
-8.5	468,000	100	208,194	181,129	154,064	129,080	99,829	109	98	90	84	82		

Items in Yellow are above 83 HP

Request 3 Max Discharge allowed with the following suction pressure														
Suction Pressure (PSIG)	Desired Flow (SCFD)	Discharge Pressure	SCFD With Versatrol				Ports				HP With Versatrol			
			0	1	2	3	4	0	1	2	3	4		
-3	741,600	25	678,784	590,542	502,300	420,846	325,477	81	73	67	62	61		
-3	741,600	30	676,005	588,124	500,244	419,123	324,144	84	76	70	65	63		
-3	741,600	35	673,227	585,707	498,188	417,401	322,812	88	79	73	68	66		
-3	741,600	40	670,448	583,290	496,132	415,678	321,480	92	83	76	71	69		
-3	741,600	45	667,670	580,873	494,076	413,955	320,148	96	86	80	74	72		
-3	741,600	50	664,891	578,455	492,019	412,232	318,815	100	90	83	77	75		
-3	741,600	55	662,113	576,038	489,964	410,510	317,483	104	94	86	80	78		
-3	741,600	60	659,334	573,621	487,907	408,787	316,151	108	97	90	83	81		
-4	741,600	30	595,619	518,189	440,758	369,284	285,599	80	72	66	62	60		
-4	741,600	35	592,973	515,887	438,800	367,643	284,331	84	76	70	65	63		
-4	741,600	40	590,328	513,585	436,843	366,003	283,062	88	79	73	68	66		
-4	741,600	45	587,682	511,283	434,885	364,363	281,794	92	83	76	71	69		
-4	741,600	50	585,037	508,982	432,927	362,723	280,525	96	86	80	74	72		
-4	741,600	55	582,391	506,680	430,969	361,082	279,256	99	89	82	76	74		
-4	741,600	60	579,745	504,378	429,011	359,442	277,988	104	94	86	80	78		
-4	741,600	65	577,100	502,077	427,054	357,802	276,719	108	97	90	83	81		
-5	741,600	35	512,960	446,275	379,590	318,035	245,964	80	72	66	62	60		
-5	741,600	40	510,447	444,089	377,731	316,477	244,759	84	76	70	65	63		
-5	741,600	45	507,935	441,903	375,872	314,920	243,555	87	78	72	67	65		
-5	741,600	50	505,422	439,717	374,012	313,362	242,350	91	82	76	70	68		
-5	741,600	55	502,910	437,532	372,153	311,804	241,145	95	86	79	73	71		
-5	741,600	60	500,397	435,345	370,294	310,246	239,940	99	89	82	76	74		
-5	741,600	65	497,885	433,160	368,435	308,689	238,736	103	93	85	79	77		
-5	741,600	70	495,372	430,974	366,575	307,131	237,531	107	96	89	82	80		
-5	741,600	75	492,859	428,787	364,716	305,573	236,326	111	100	92	85	83		
-6	741,600	45	428,428	372,732	317,037	265,625	205,431	83	75	69	64	62		
-6	741,600	50	426,048	370,662	315,276	264,150	204,290	87	78	72	67	65		
-6	741,600	55	423,669	368,592	313,515	262,675	203,149	91	82	76	70	68		
-6	741,600	60	421,289	366,521	311,754	261,199	202,008	95	86	79	73	71		
-6	741,600	65	418,910	364,452	309,993	259,724	200,867	99	89	82	76	74		
-6	741,600	70	416,530	362,381	308,232	258,249	199,726	103	93	85	79	77		
-6	741,600	75	414,150	360,311	306,471	256,773	198,585	107	96	89	82	80		
-6	741,600	80	411,771	358,241	304,711	255,298	197,444	111	100	92	85	83		

Items in Yellow are above 83 HP