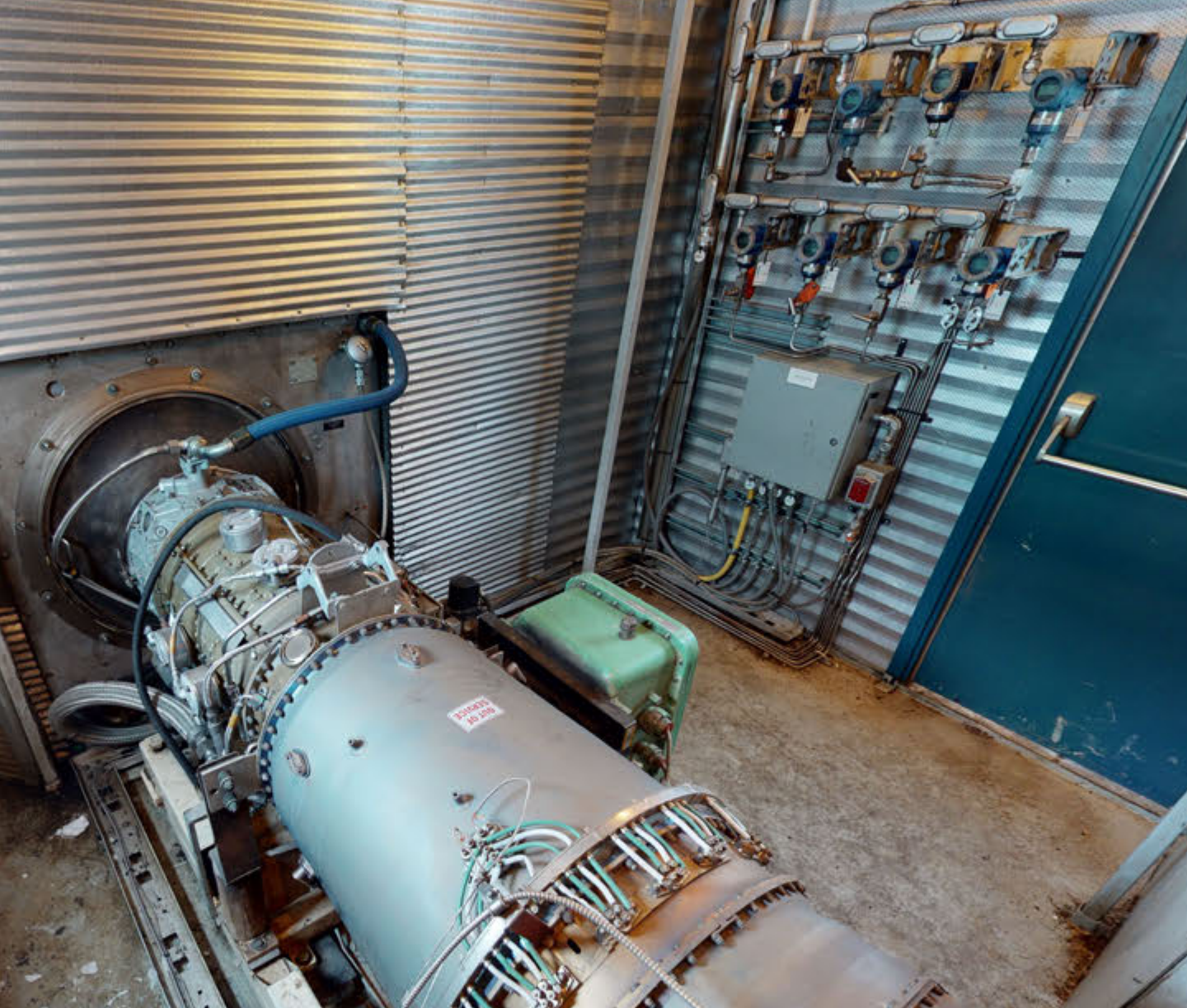




CJV#1926

Two (x2) 2500 kW Allison Natural Gas Turbine Generator Packages



Sitting in Central AB, these two Allison gas turbine generator packages are each capable of producing 2.5 MW of power. The system comes with grid connect equipment, as well as a thermal oil heat recovery system.

In 2018, both of these units (including turbines, gearboxes, and generators) were overhauled. Since that time, there has only been ~2000 hours on these units. These were part of a larger overall gas plant and between electrical prices, gas prices, and not requiring the hot oil on site any longer, they were only run for 3-5 days per month since the overhaul.

These packages are extremely clean and are priced to sell.

CJV#1926 – Two (x2) 2500 kW Allison Gas Turbine 501-K5 Natural Gas Generator Packages



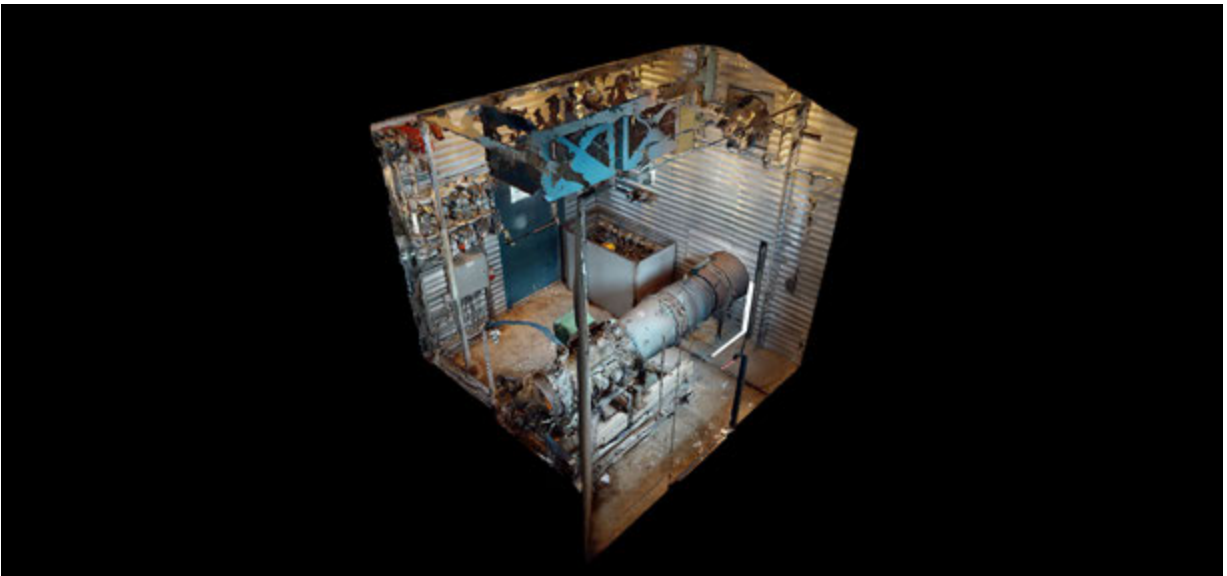
Condition	Used ~2000 hours since full overhaul in 2018
Manufactured	Gridlink 2001
Location	Central, AB
Status / Availability	Immediate
Drivers	Allison 501-K Gas Turbines Approximately 2000 hrs since overhaul.
Generators	KATO 3000KW @ 1800 RPM 2400/4160V, 3PH/60Hz/520A, brushless, continuous duty
Gearboxes	Western; 2850HP Rating; Operated at 2500 kW Overhauled in July 2018 (both)
Control Panel	Tarco Motiv Panel is mounted in "on skid" MCC room c/w heater, distribution panel & UPS
Exchangers	Heat recovery, hot oil system operating @ 300°C
Additional Notes	Both generators run separately to an MCC building with full grid tie-in transformers.



Take a 3D walkthrough of the **TURBINE** <https://bit.ly/3o3mJdX> and **GENERATOR** <https://bit.ly/2KBwaTp>





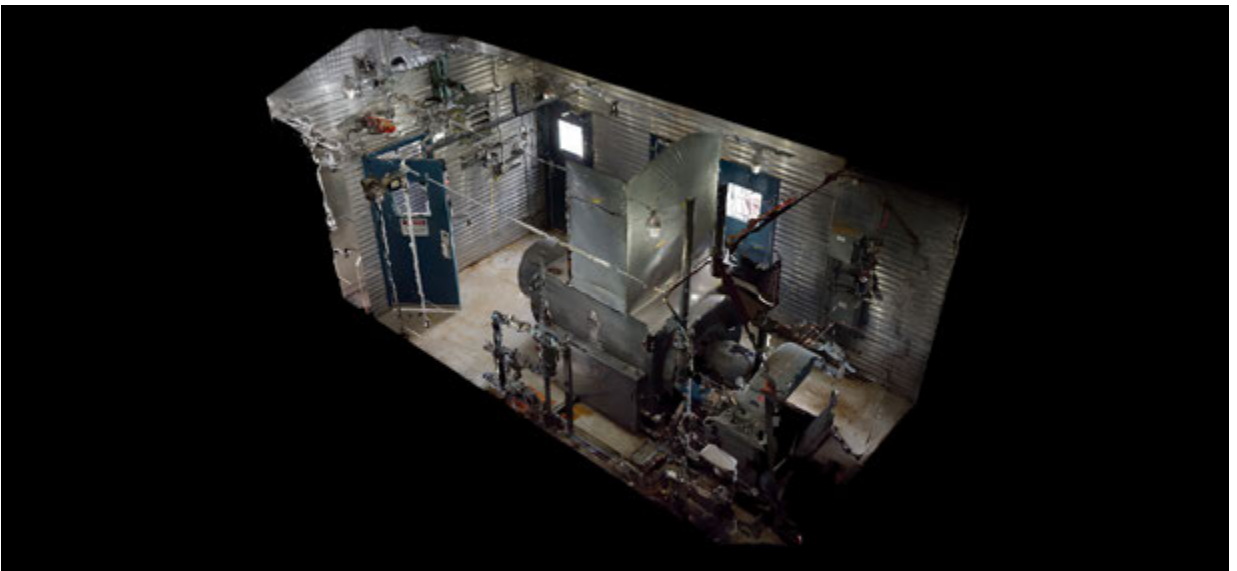


Take a 3D walkthrough of the **TURBINE** <https://bit.ly/3o3mJdX>

Generator and Gearbox







Take a 3D walkthrough of the **GENERATOR** <https://bit.ly/2KBwaTp>

Waste Heat Recovery Thermal Oil Heater System



Designed for hot oil – operated at 300°C. Each turbine is equipped with a waste heat recovery thermal oil heater tied into a common 48" surge vessel c/w dual centrifugal pumps on a skid.





