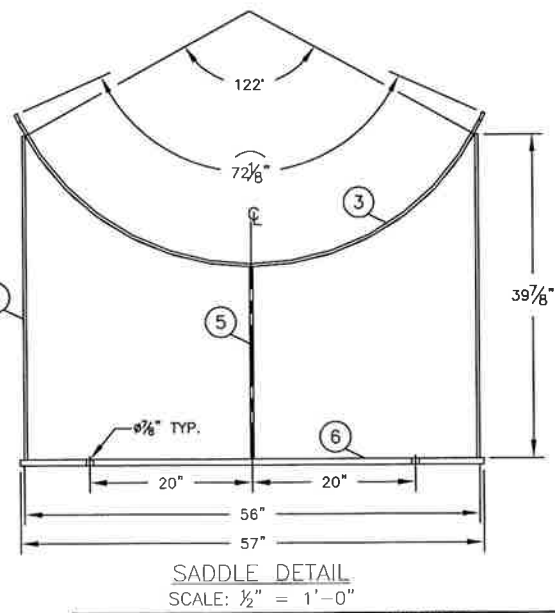
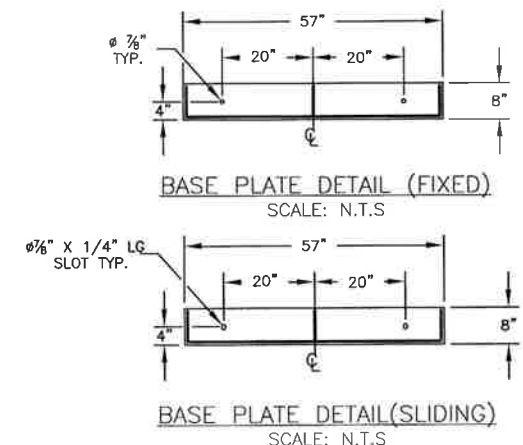
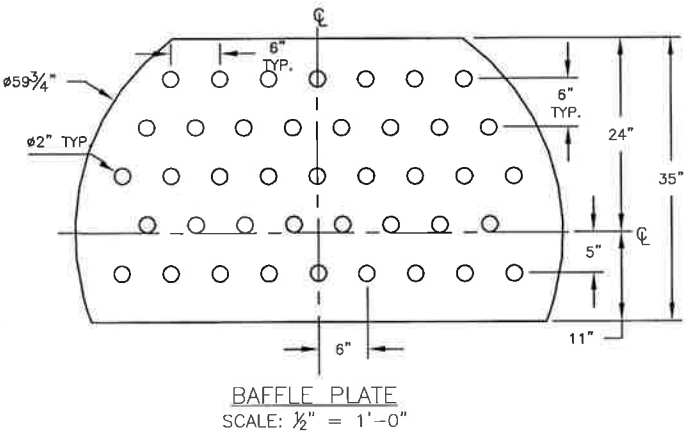
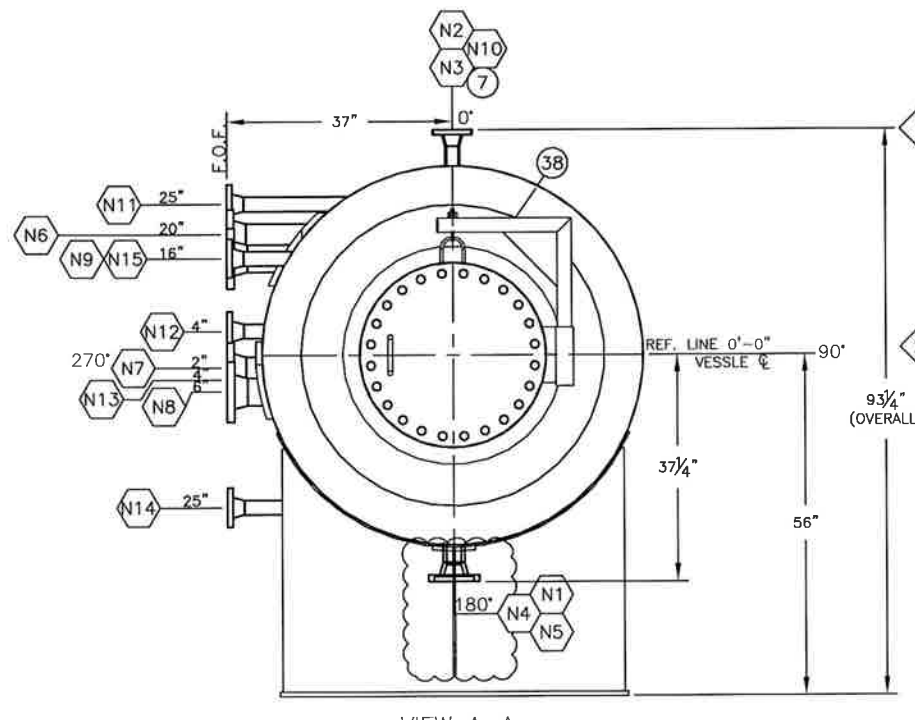
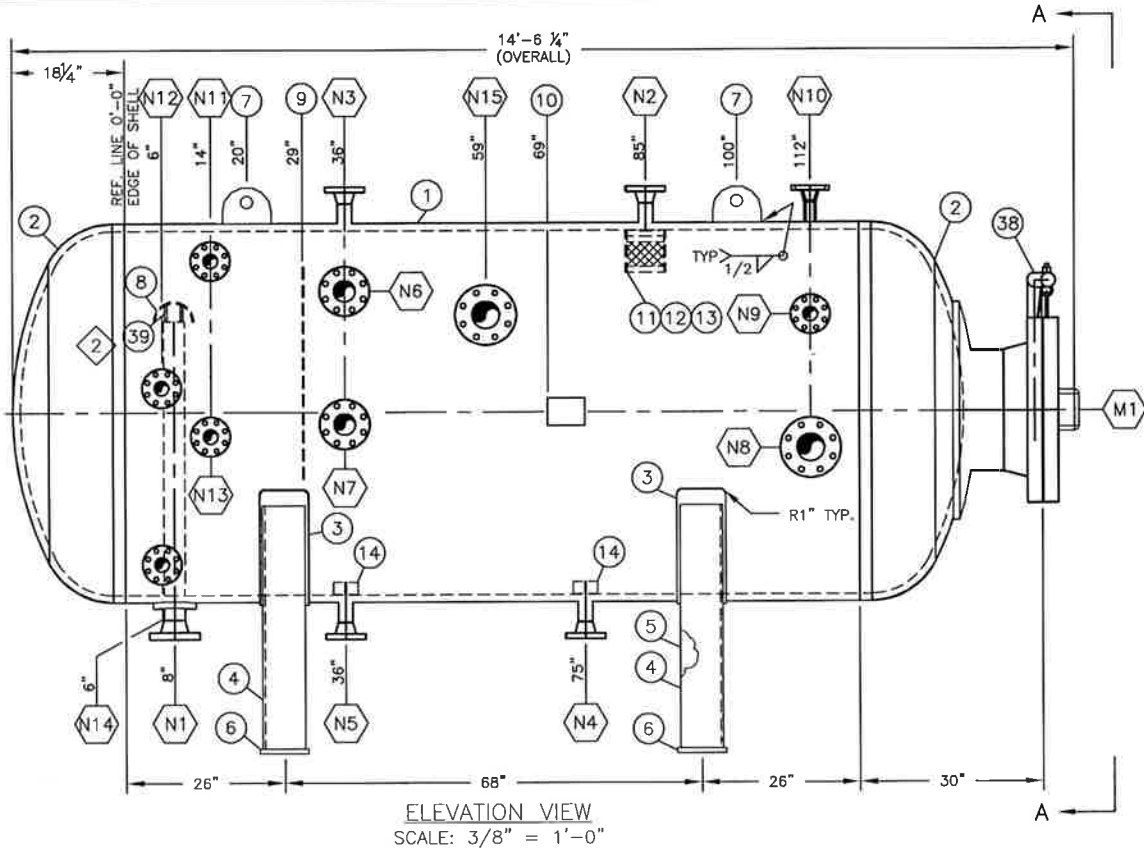


MARK #	QTY	SIZE	SCH.	RATING & FACING	SERVICE	PROJECTION		REPAD SIZE	WELD SIZE			WD#	ITEM	
						INSIDE(h)	OUTSIDE		A	B	C			
						OD	THK.							
N1	1	3"	160	CL300 RFWN	GAS INLET	45"	6"	7"	1"	3/8"	-	5/8"	IV/VIII	15-17A
N2	1	2"	160	CL300 RFWN	GAS OUTLET	MIN.	6"	-	-	3/8"	-	-	II/VIII	18,19
N3	1	2"	160	CL300 RFWN	PSV	MIN.	6"	-	-	3/8"	-	-	II/VIII	18,19
N4	1	2"	160	CL300 RFWN	WATER OUT	GRIND FLUSH	6"	-	-	3/8"	-	-	II/VIII	18,20
N5	1	2"	160	CL300 RFWN	DRAIN/FILL	GRIND FLUSH	6"	-	-	3/8"	-	-	II/VIII	18,20
N6	1	3"	160	CL300 RFWN	HL SWITCH	MIN.	AS SHOWN	10"	1"	3/8"	-	5/8"	IV/VIII	15,17B,21
N7	1	3"	160	CL300 RFWN	LL SWITCH	MIN.	AS SHOWN	7"	1"	3/8"	-	5/8"	IV/VIII	15,17A,22
N8	1	4"	160	CL300 RFWN	POWER FLUID OUT	MIN.	AS SHOWN	9"	1"	3/8"	-	5/8"	IV/VIII	23-25
N9	1	2"	160	CL300 RFWN	OIL OUT	MIN.	AS SHOWN	-	-	3/8"	-	-	II/VIII	18,26
N10	1	1 1/2"	160	CL300 RFWN	INSTRUMENT	MIN.	6"	-	-	3/8"	-	-	II/VIII	27,28
N11	1	2"	160	CL300 RFWN	LEVEL GAUGE	MIN.	AS SHOWN	-	-	3/8"	-	-	II/VIII	18,29
N12	1	2"	160	CL300 RFWN	LEVEL GAUGE	MIN.	AS SHOWN	-	-	3/8"	-	-	II/VIII	18,30
N13	1	2"	160	CL300 RFWN	LEVEL GAUGE	MIN.	AS SHOWN	-	-	3/8"	-	-	II/VIII	18,30
N14	1	2"	160	CL300 RFWN	LEVEL GAUGE	MIN.	AS SHOWN	-	-	3/8"	-	-	II/VIII	18,29
N15	1	4"	160	CL300 RFWN	LEVEL CONTROLLER	MIN.	AS SHOWN	9"	1"	3/8"	-	5/8"	IV/VIII	23,25,31
M1	1	20"	40	CL300 RFWN	MANWAY	MIN.	AS SHOWN	36"	1"	3/8"	-	5/8"	IV/VIII	32-37

BILL OF MATERIALS S/N: 1459-10-A1-1 & 1459-10-A1-2 (2 UNITS)		
ITEM	QTY	DESCRIPTION
1	1	SHELL 60" ID X 10'-0" LG. X 1 1/4" ROLLED PLATE, SA-516-70N
2	2	HEAD 60" ID X 1 1/4" NOM. (1.1875" MIN.) THK. 2:1 SE C/W 2" SF, SA-516-70N
3	2	WEAR PLATE 8" (W) X 72 1/8" (L) X 3/8" THK. ROLLED TO 62 1/2" ID, SA-516-70N
4	2	SADDLE 7" WD X 56" LG X 39 7/8" HIGH X 3/8" THK. FORMED CHANNEL PLATE, SA-36/44W
5	2	SADDLE RIB PL 3/8" X 6 5/8" WD X 23 9/16" LG, SA-36/44W
6	2	BASEPLATE 57" (L) X 8" (W) X 3/4" THK. PLATE, SA-36/44W
7	2	LIFTING LUG 8" WD X 6" HIGH X 3/4" THK. PLATE W/ Ø2" HOLE, SA-516-70N
8	1	INLET DIVERTER HALF PIPE 6 NPS SCH 40 X 12" LG, SA-106B
9	1	BAFFLE PLATE 35" X Ø59 3/4" X 1/4" THK. ROUNDED ON TWO ENDS (SEE DETAIL), SA-36/44W
10	1	NAMEPLATE c/w BRACKET 304SS/SA-36/44W
11	1	MISTPAD 6"OD X 4" X 9# CU FT c/w GRIDS 316SS
12	1	MISTPAD CASING, PIPE 6 NPS SCH 40 X 7" LG SA-106B
13	2	MISTEX SUPPORT FB 1" X 1/2" THK - SHOP FIT, SA-36/44W
14	2	VORTEX BREAKER FB 2" X 4" LG X 1/4" THK. (SHOP STD FOR 2NPS) SA-36/44W
15	3	FLANGE 3NPS CL300 RFWN SCH 160 BORE, SA-105N (N1, N6, N7)
16	1	NOZZLE NECK 3NPS SCH 160 X 49 1/8" LG, SA-106B (N1)
17A	2	REPAD 7" OD X 1" THK. ROLLED TO 62 1/2" ID, SA-516-70N (N1, N7)
17B	1	REPAD 10" OD X 1" THK. ROLLED TO 62 1/2" ID, SA-516-70N (N6)
18	9	FLANGE 2NPS CL300 RFWN SCH 160 BORE, SA-105N (N2-N5, N9, N11-N14)
19	2	NOZZLE NECK 2NPS SCH 160 X 4 9/16" LG, SA-106B (N2, N3)
20	2	NOZZLE NECK 2NPS SCH 160 X 4 1/2" LG, SA-106B (N4, N5)
21	1	NOZZLE NECK 3NPS PIPE SCH 160 X 13 9/16" LG, SA-106B (N6)
22	1	NOZZLE NECK 3NPS PIPE SCH 160 X 4 3/8" LG, SA-106B (N7)
23	2	FLANGE 4NPS CL300 RFWN SCH 160 BORE, SA-105N, (N8, N15)
24	1	NOZZLE NECK 4NPS SCH 160 X 5" LG, SA-106B, (N8)
25	2	REPAD 9" OD X 1" THK. ROLLED TO 62 1/2" ID, SA-516-70N (N8, N15)
26	1	NOZZLE NECK 2NPS, SCH 160 X 10" LG, SA-106B (N9)
27	1	FLANGE 1 1/2 NPS CL300 RFWN SCH 160 BORE, SA-105N (N10)
28	1	NOZZLE NECK 1 1/2 NPS SCH 160 X 4 3/4" LG, SA-106B (N10)
29	2	NOZZLE NECK 2 NPS SCH 160 X 20 1/8" LG, SA-106B (N11, N14)
30	2	NOZZLE NECK 2 NPS SCH 160 X 5" LG, SA-106B (N12, N13)
31	1	NOZZLE NECK 4NPS SCH 160 X 10 1/8" LG, SA-106B, (N15)
32	1	FLANGE 20NPS CL300 RFWN SCH 40, BORE, SA-105N, (M1)
33	1	NOZZLE NECK 20NPS SCH 40 X 7 1/2" LG, SA-106B (M1)
34	1	REPAD 36" OD X 1" THK. DISHED TO 62 1/2" OD HEAD, SA-516-70N (M1)
35	1	BLIND 20NPS CL300 RFWN, SA-105N (M1)
36	1	GASKET 1/8" THK, CL300 SPIRAL WOUND 304SS (M1)
37	1	STUD BOLT (24) Ø1 1/4" X 8" LG. c/w NUTS, SA-193-B7/ SA-194-2H (M1)
38	1	DAVIT ASSEMBLY- SHOP STANDARD FOR 20NPS CL300 RFWN
39	2	FB 1" X 3/8" X 5" LG, SA36/44W



NOTES:

- IMPACT TESTING EXEMPT PER UG-20(f), 1 THROUGH 5, UCS-66(a) AND FIG. UCS-66 NOTE e.
- RADIOGRAPHY: LONG SEAM-FULL PER UW-U(a), CIRC. SEAM-SPOT PER UW-11(a)(5)(b).
- LOADINGS APPLIED PER UG-22(a),(b),(c),(d).
- FABRICATION TOLERANCES SHALL BE IN ACCORDANCE WITH QCP SECTION 10-4.
- ATTACHMENTS WITH NO WELD DETAIL OR SYMBOL SHALL BE ATTACHED BY A 1/4" FILLET WELD USING LATEST REVISION OF WPS MQI-1.
- EXTERIOR OR INTERIOR CORNERS OR EDGES OF OPENINGS WITHOUT A RADIUS VALUE SHALL BE CHAMFERED TO A 1/8" MINIMUM OR ROUNDED TO A 1/8" MINIMUM RADIUS.
- MINIMUM PREHEAT TEMPERATURE:
 - A) 1/8" TO 1 1/8" THK. PREHEAT TO 50°F
 - B) 1 1/8" & OVER PREHEAT TO 200°F

CERTIFIED AS-BUILT

VESSEL DESIGN DATA			
DESIGN PRESSURE:	740 PSIG	EFFICIENCY:	0.7 PER UW-12d
DESIGN TEMPERATURE:	100°F	VOLUME:	235.82 CU. FT.
CORROSION ALLOWANCE:	1/16"	OVERALL LENGTH:	14'-6 1/4"
M.D.M.T.:	-20°F @ 740 PSI	WEIGHT (EMPTY):	15,448 LBS
HYDROSTATIC TEST:	962 PSIG	WEIGHT (FULL):	30,163.17 LBS
RADIOGRAPHY:	NOTE 2	REFERENCE DWG.	399
P.W.H.T.:	NO	CRN NO.	V1436.2

ALL BOLT HOLES TO STRADDLE CENTERLINES UNLESS OTHERWISE NOTED

MAR-QUINN INDUSTRIES LTD.		END USER
7115 Sparrow Drive, Leduc, Alberta T9E 7L1 PH. (780) 986-7805 FAX. (780) 986-2854		ROTATING RIGHT
APPROVED BY: T. CLAYTON		CLIENT
CHKD BY: H. LIAZ		ROTATING RIGHT
DWN BY: H. XUE		DISTRIBUTION
DRAWING NO. 1459-10-A1-1 & 1459-10-A1-2 (2 UNITS)		QC 1
HORIZONTAL SEPARATOR 60" ID X 10'-0" S/S, 1/16" CA 740 PSI @ -20/100°F		SHOP
SCALE AS NOTED		PROCUREMENT
DATE Sep-14-2016		PROJ. MANAGER
TOTAL		PROV. / P. ENG
TOTAL		CLIENT
TOTAL		1

WELD PROCEDURE SPECIFICATION:
MQI-1 REV 1: SMA-SMA-P1-P1-AW
MQI-3 REV 1: GMA-SMA-P1-P1-AW
MQI-5 REV 1: SAW-P1-P1-AW

DRAWINGS						
REV.	DESCRIPTION	BY	CHKD	CHKD	DATE	
2	AS BUILT	MC	DP	LT	HL	08.05.10
1	ADDED ITEM 39 & CRN NO, REVISED ITEM 8	MC	DP	LT	HL	08.05.10
0	ISSUED FOR CONSTRUCTION	HL	HL	HL	HL	06.02.10