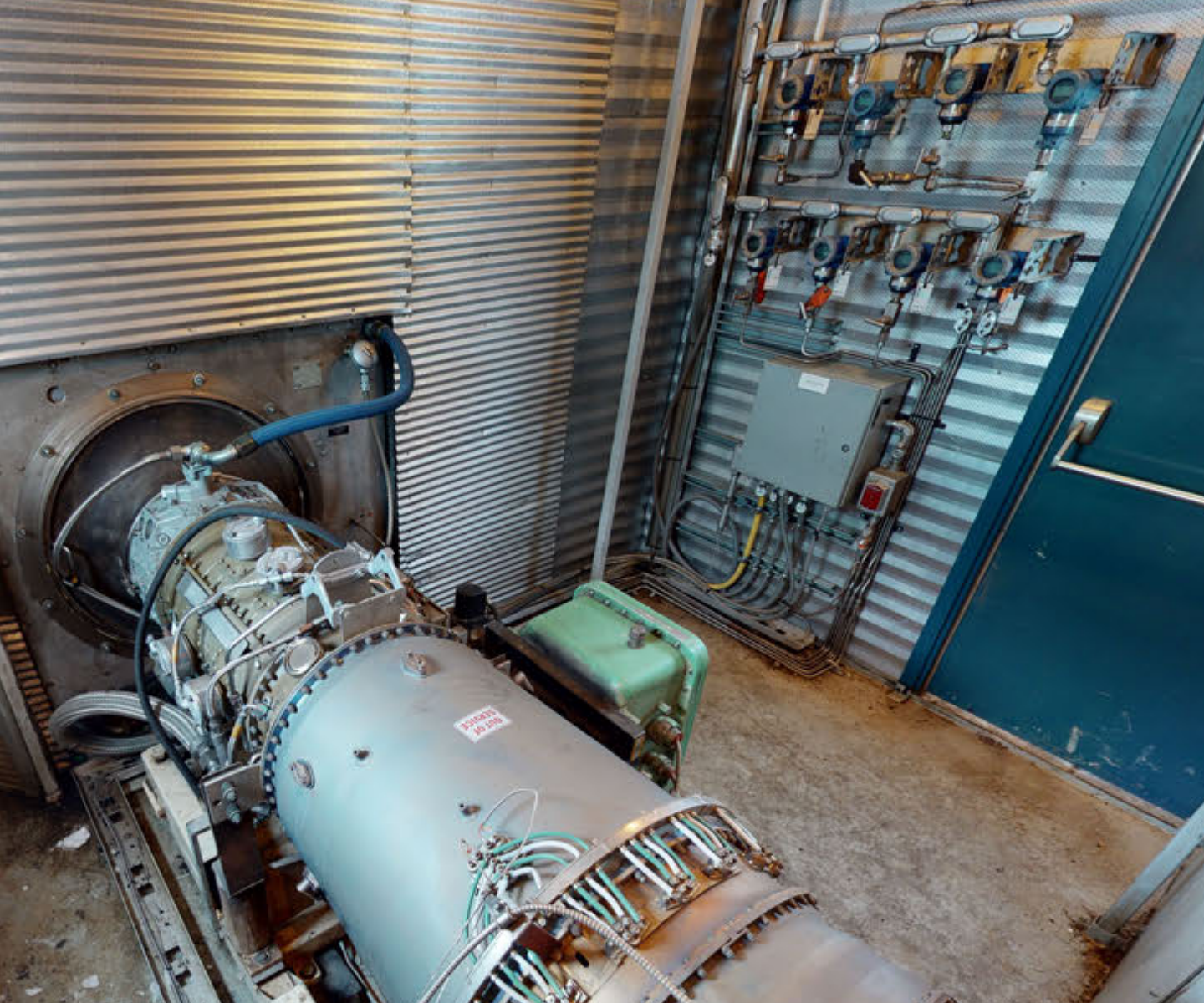


A grayscale photograph of an industrial facility, likely a power plant or refinery. The image shows large storage tanks, complex piping, and structural steel frameworks. The scene is somewhat hazy, suggesting an overcast day or a distant camera angle. The text is overlaid on the left side of the image.

#1926

**Two (x2)  
2500 kW Allison  
Natural Gas Turbine  
Generator Packages**

*FOR IMMEDIATE SALE*



Sitting in Central AB, these two Allison gas turbine generator packages are each capable of producing 2.5 MW of power. The system comes with grid connect equipment, as well as a thermal oil heat recovery system.

In 2018, both of these units (including turbines, gearboxes, and generators) were overhauled. Since that time, there has only been ~2000 hours on these units. These were part of a larger overall gas plant and between electrical prices, gas prices, and not requiring the hot oil on site any longer, they were only run for 3-5 days per month since the overhaul.

These packages are extremely clean and are priced to sell.

**FOR IMMEDIATE SALE**

## #1926 – Two (x2) 2500 kW Allison Gas Turbine 501-K5 Natural Gas Generator Packages



<b>Condition</b>	Used ~2000 hours since full overhaul in 2018
<b>Manufactured</b>	Gridlink 2001
<b>Location</b>	Central, AB
<b>Status / Availability</b>	Immediate
<b>Drivers</b>	Allison 501-K Gas Turbines Approximately 2000 hrs since overhaul.
<b>Generators</b>	KATO 3000KW @ 1800 RPM 2400/4160V, 3PH/60Hz/520A, brushless, continuous duty
<b>Gearboxes</b>	Western; 2850HP Rating; Operated at 2500 kW Overhauled in July 2018 (both)
<b>Control Panel</b>	Tarco Motiv Panel is mounted in "on skid" MCC room c/w heater, distribution panel & UPS
<b>Exchangers</b>	Heat recovery, hot oil system operating @ 300°C
<b>Additional Notes</b>	Both generators run separately to an MCC building with full grid tie-in transformers.



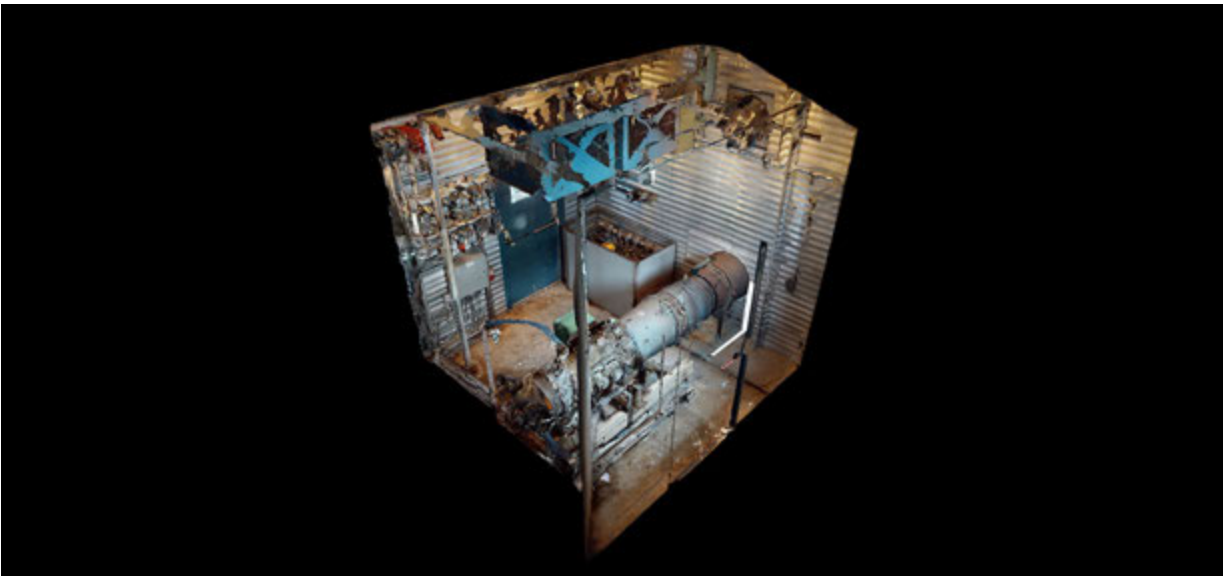
Take a 3D walkthrough of the **TURBINE** <https://bit.ly/3o3mJdX> and **GENERATOR** <https://bit.ly/2KBwaTp>











Take a 3D walkthrough of the **TURBINE** <https://bit.ly/3o3mJdX>

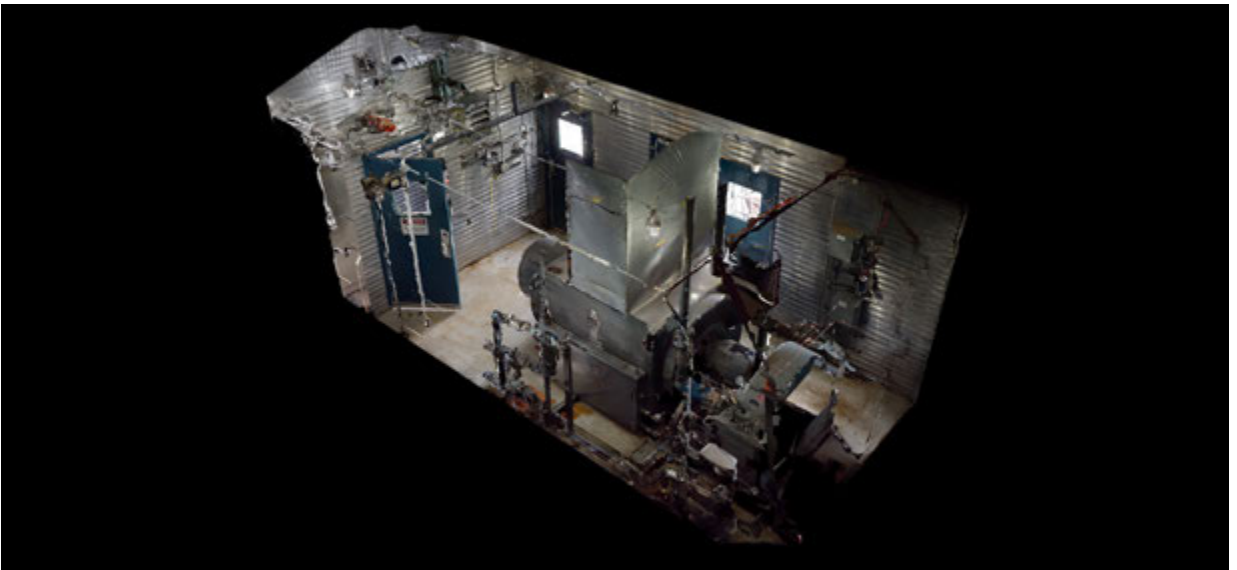
## Generator and Gearbox











Take a 3D walkthrough of the **GENERATOR** <https://bit.ly/2KBwaTp>

## Waste Heat Recovery Thermal Oil Heater System



*Designed for hot oil – operated at 300°C. Each turbine is equipped with a waste heat recovery thermal oil heater tied into a common 48" surge vessel c/w dual centrifugal pumps on a skid.*







