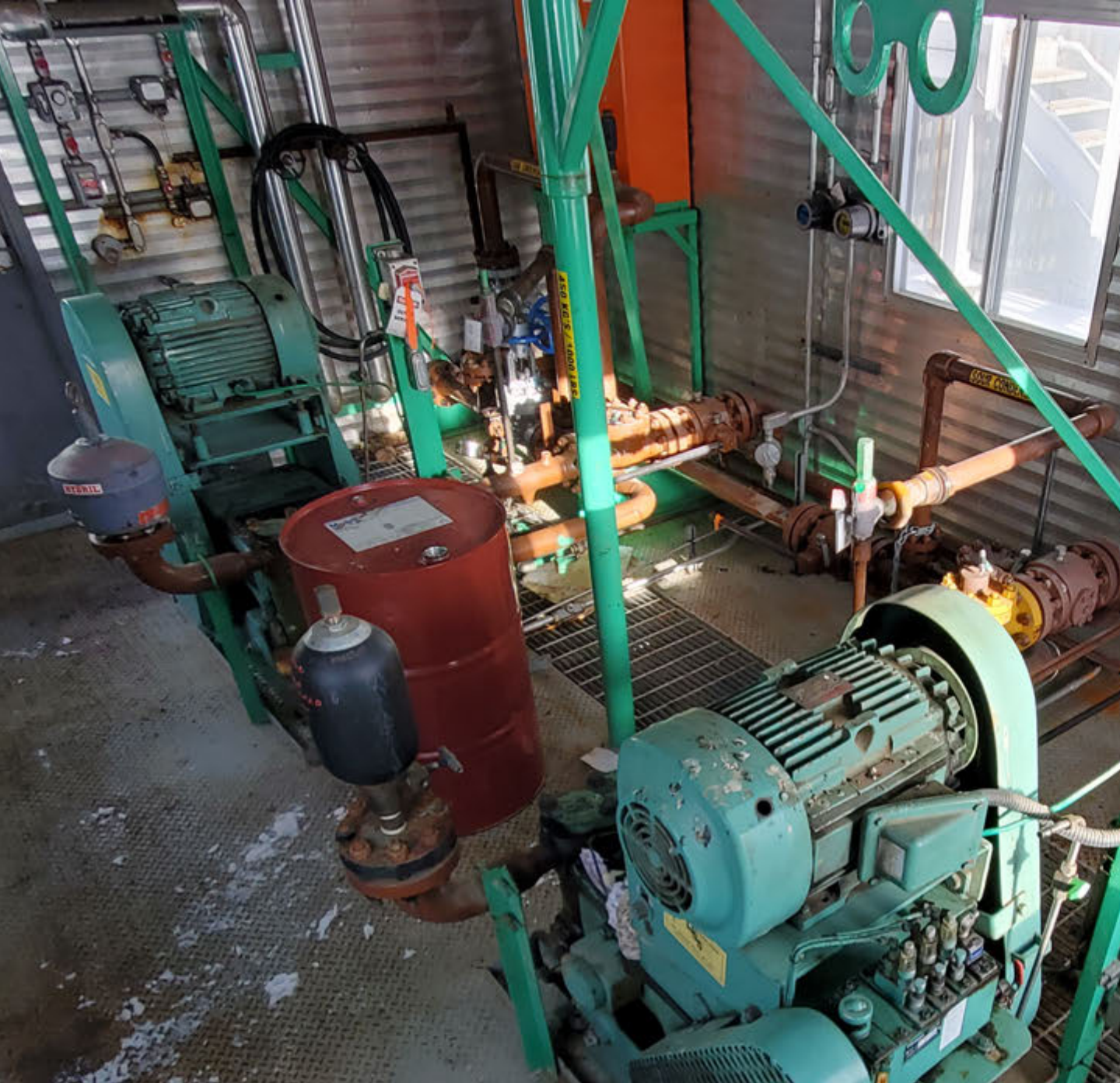


#1927

Twin 25HP Condensate Pump Package

FOR IMMEDIATE SALE



Clean, economical, and ready to go – this dual condensate pump skid features 25HP Gardner Denver triplex pumps with 7.5HP electric motors. We did not internally inspect, however running such an undersized motor on the pump greatly reduces rod load, and minimizes crankcase internal wear. The operators have indicated that it has been a good and reliable pump package all the way through to its shutdown in summer 2020. Call us to discuss your application and our suggestions for modifications to get this redeployed.

FOR IMMEDIATE SALE

#1927

Twin 25HP Condensate Pump Package



Condition	Used
Manufactured	Opsco
Location	West Central, AB
Availability	Immediate
Service	Sour
Driven	Twin 25HP Gardner Denver triplex pumps
Driver	Twin General Electric 7.5HP electric motor
Piping	3" 600# Suction, 3" 600# discharge
Electrical	Fully wired to JB's
Dimensions	12' W x 20' L
Notes	Shutdown in summer 2020, cleaned and drained in September 2020. Great condition.

Pump & Accessories

MAIN PUMP, MOTOR AND EQUIPMENT

Triplex Pumps:

- Two (2) Gardner Denver GD25T Triplex Pumps
- 1.5" Plungers
- Maximum Continuous RPM Rating: 600RPM
- 3" NPT Suction; 2.5" NPT Discharge Connections
- Rated for 27HP Continuous Duty
- Sheave Kit and V-Belt Drive
- 3 Feed Lubricators w/ Oil Reservoir
- Discharge Stabilizers
- Mounted on sub assemblies and attached to main skid

The package was shutdown in June, cleaned and drained in September 2020

Triplex Pump Motors:

- Two (2) General Electric 7.5HP Electric Motors
- TEFC; 11750RPM
- 480/3/60VAC
- Small motors are cheap - change them out

Plunger Size		Maximum Pressure		Displacement per revolution		Gallons Per Minute/Liters at the following RPM:											
						225		300		400		500		550		600	
in.	mm	PSI	kg/cm2	gal.	liters	GPM	LPM	GPM	LPM	GPM	LPM	GPM	LPM	GPM	LPM	GPM	LPM
LP ALUMINUM BRONZE (TQBA), CAST NODULAR IRON (TQBB), CARBON STEEL (TQBD) FLUID ENDS																	
2.25	57	675	47	0.103	0.389	23	88	31	117	41	156	52	195	57	214	626	234
2.00	51	855	60	0.082	0.310	18	70	25	93	33	124	41	155	45	171	49	186
1.75	44	1115	78	0.062	0.234	14	53	19	70	25	94	31	117	34	129	37	141
1.50	38	1520	107	0.046	0.174	10	39	14	52	18	70	23	87	25	96	28	104
1.25	32	2185	153	0.032	0.121	7	27	10	36	13	48	16	61	18	67	19	73
1.00	25	2250	158	0.020	0.075	5	17	6	23	8	30	10	38	11	42	12	45

Based on 90% mechanical efficiency and 100% volumetric efficiency.
For applications within shaded area contact Customer Service.

Specifications subject to change without notice.

PIPING

Suction Piping:

- Two (2) x 3" 600# Inlets
- Both pumps have independent suction lines.
Can be tied together via globe valve
- One (1) 3" 600# common outlet

Drain Piping:

- Process piping drains to skid edge via threaded drain piping
- Suction piping also has drain directly into sump
- Pump stuffing boxes drain into open Sump

Building and Electrical

SKID

- 12' W x 20' L Skid and Building
- ¼" Checker Plate Flooring
- Drip lip around unitized pumps
- One (1) full length open sump
- One (1) jib crane

BUILDING

- Gable Style Building
- Ridge-vent
- Ice Rakes
- One (1) Double Man Door
- Two (2) Single Man Doors w/ window
- Four (4) Windows
- Two (2) vents w/ slide

ELECTRICAL

- Two (2) Interior Lights w/ Switches
- Two (2) Exterior Lights w/ Switches
- Four (4) Beacons (Red & Blue)
- One (1) High Mount Exhaust Fan w/ switch
- LEL and H2S Gas Detection
- One (1) 120V Electrical Receptacle
- One (1) ESD Buttons
- One (1) heat medium Roughneck heater









