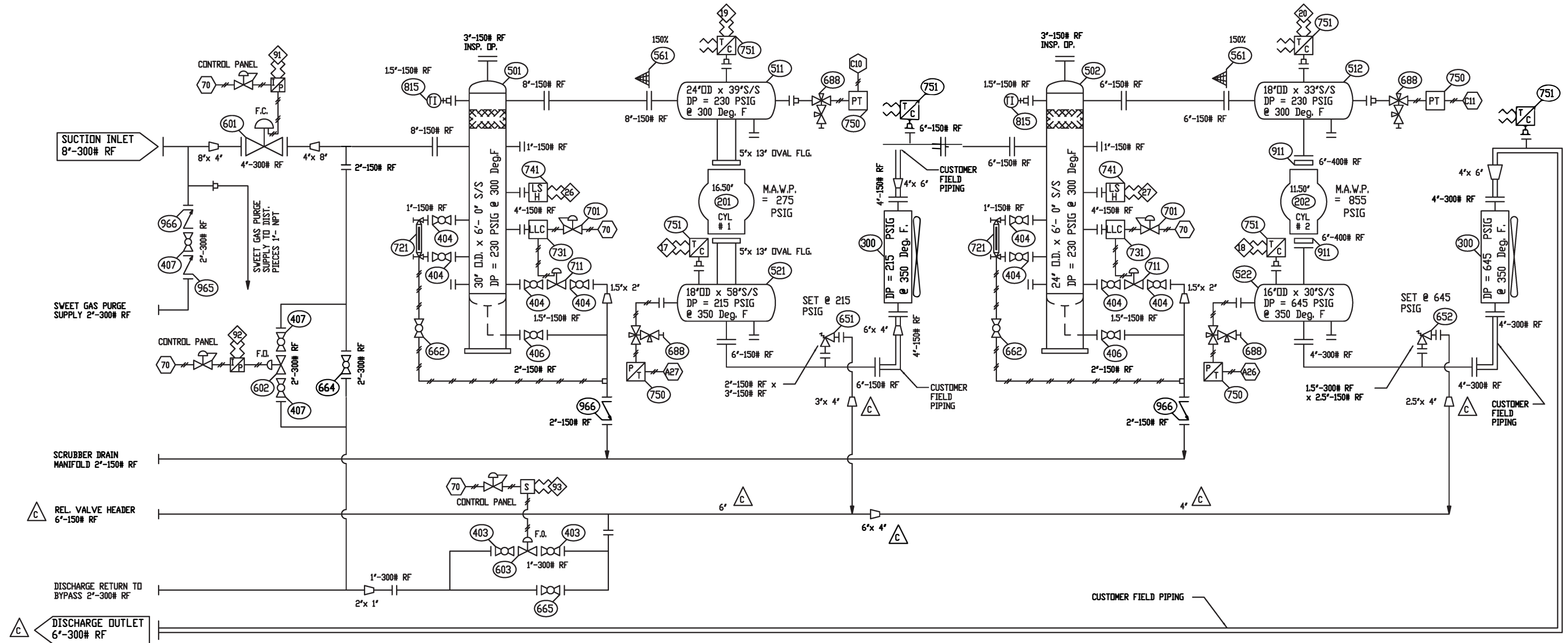


MOTOR: RELIANCE 800HP S/N FC7382M2	COMPRESSOR: DRESSER RAND DF6XH2 S/N A-19575	1st CYLINDER 16.5" A16GH-2 MAWP = 275 PSIG S/N A-14084	2nd CYLINDER 11.5" G12201 MAWP = 675 PSIG S/N A-16256	COOLER: AIR-X 108 EF S/N 138347B	1st SCRUBBER: A1 636993 S/N 13-247 CRN: W4105.213	2nd SCRUBBER: A1 636994 S/N 13-240 CRN: W4107.213	1st CYLINDER BOTTLES: A1 636969, 636977 S/N 13-248, 13-249 CRN: W4248.213, W4247.213	2nd CYLINDER BOTTLES: A1 569497, 636970 S/N 13-251, 13-252 CRN: W4057.213, W4103.213	1st STG. DISCH. PSV: FARRIS 26JA10-120 SET @ 215 PSIG	2nd STG. DISCH. PSV: FARRIS 26GA12-120 SET @ 645 PSIG	CONTROL PANEL: SPARTAN REM Vue500 S/N RS-34103-AA
--	---	---	--	--	--	--	---	---	---	---	---



PNEUMATIC TERMINATIONS

- 10 SUCTION PRESSURE STG. ONE
- 11 SUCTION PRESSURE STG. TWO
- 27 DISCH. PRESSURE STG. ONE
- 26 DISCH. PRESSURE STG. TWO
- 70 INSTRUMENT GAS
- 91 SUCTION CONTROL VALVE SIGNAL
- 92 AUTOBYPASS SIGNAL
- 93 AUTOBLOWDOWN VALVE SIGNAL

ELECTRIC TERMINATIONS

- 26 HIGH LIQUID LEVEL FIRST SCRUBBER
- 27 HIGH LIQUID LEVEL SECOND SCRUBBER
- 12 VIBRATION COOLER
- 8 VIBRATION COMPRESSOR
- 9 VIBRATION MOTOR
- 6 HIGH TEMPERATURE COMPRESSOR OIL
- 401 LOW PRESSURE COMP. OIL
- 15 LOW LEVEL COMP. OIL
- 13 LUBRICATOR NO FLOW SWITCH
- 17 DISCHARGE TEMP. CYLINDER #1
- 18 DISCHARGE TEMP. CYLINDER #2
- 19 SUCTION TEMP. CYLINDER #1
- 20 SUCTION TEMP. CYLINDER #2

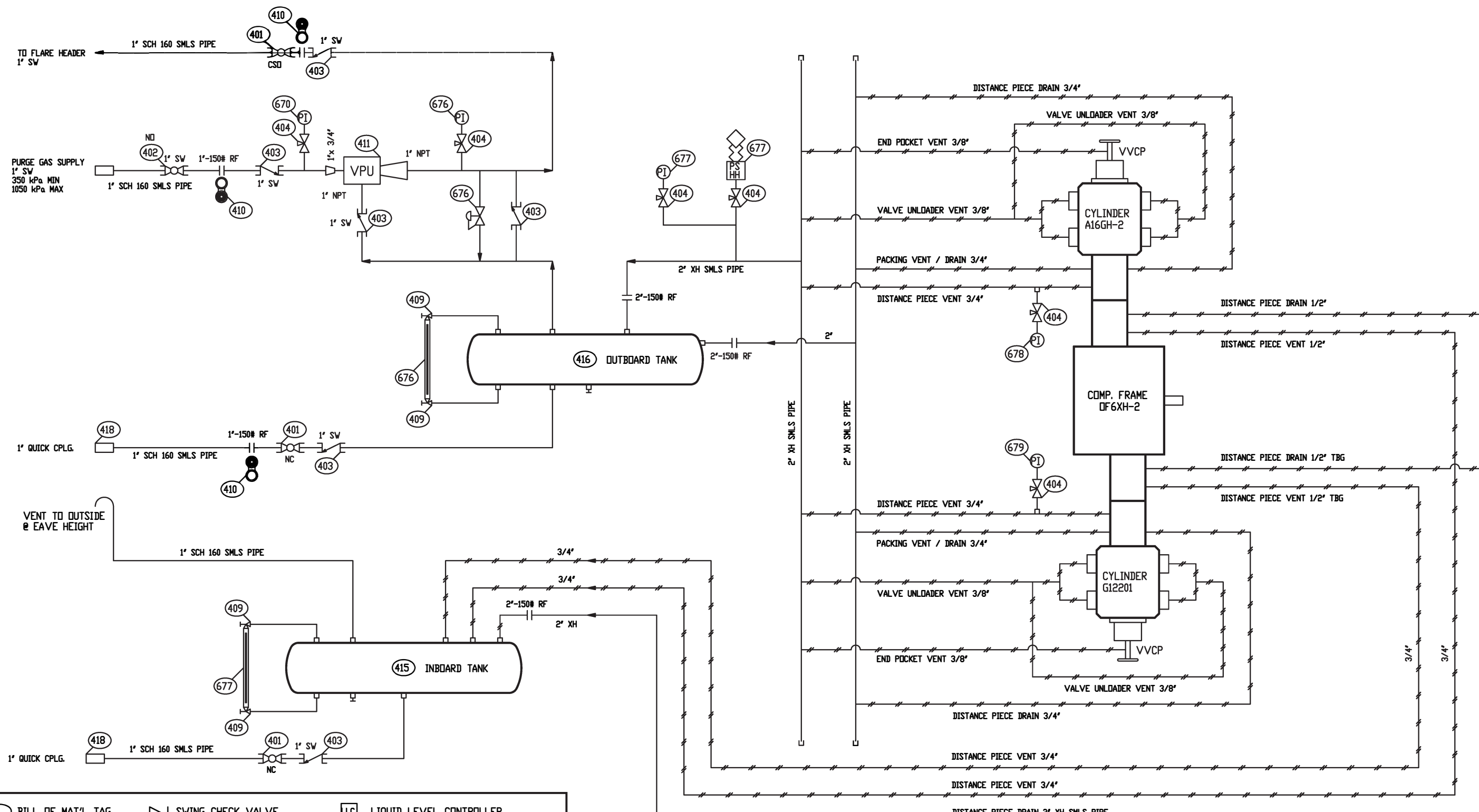
GENERAL NOTES

1. INSTRUMENTATION
 - TEMP. & PRESS. GAUGES SHALL BE DUAL SCALE
 - INSTRUMENT MEDIUM TO CLEAN DRY FUEL GAS
 - CONTROL PANEL POWERED BY - 24 V DC
 - PROCESS TUBING TO BE 3/8" OD x .035" w.t. 316L SS
 - FITTINGS TO BE 316L SS c/w 316L SS FERRULES
 - INSTRUMENT TUBING TO BE 1/4" OD x .035" w.t. 316L SS
 - FITTINGS TO BE 316L SS c/w 316L SS FERRULES
 - LUBE OIL TUBING TO BE OD AS NOTED x .035" 316L SS
 - FITTINGS TO BE 316L SS c/w 316L SS FERRULES
 - TUBING RUNS IN TRAFFIC AREAS SHALL BE PROTECTED WITH REMOVABLE COVER
 - ON SKID WIRING BY MID WESTERN / SELECT
2. PROCESS PIPING
 - CONSTRUCTED IN ACCORDANCE WITH ANSI B31.3 & NACE MR 0175
 - HYDROSTATIC TESTED TO 1.5 x DESIGN PRESS. @ AMBIENT
 - CORROSION ALLOWANCE = 0.125 INCHES
 - RADIOGRAPHIC EXAMINATION = 100% X-RAY
 - STRESS RELIEVED - 1150 Deg.F / ONE HOUR
 - PIPING MATERIAL ORDERED WITH RESTRICTED CHEMISTRY
 - EXTERNALLY POWER CLEANED TO SSPC SP3 & PAINTED
 - INTERNALLY FLUSHED & OILED
 - ALL FLANGED RELIEF VALVES SHALL BE GUSSETED OR BRACED BACK TO PIPING OR VESSEL
 - PIPING TO BE ANCHORED TO STRUCTURAL MEMBERS WITH STANDARD STRAP TYPE HEAVY DUTY CLAMPS (NO "U-BOLT" TYPE)
 - PROCESS SCREWED CONNECTIONS SHALL BE 6000# FS TOL
3. PROCESS PRESSURE VESSELS
 - CONSTRUCTED IN ACCORDANCE WITH ASME SECTION VIII, DIV. 1
 - HYDROSTATIC TESTED TO 1.3 x DESIGN PRESS. @ AMBIENT
 - CORROSION ALLOWANCE = 0.125 INCHES
 - RADIOGRAPHIC EXAMINATION = FULL PER UV 11a (100%)
 - STRESS RELIEVED - 1150 Deg.F / ONE HOUR
 - VESSEL MATERIAL ORDERED WITH RESTRICTED CHEMISTRY
 - EXTERNALLY PICKLED & OILED (SUCTION BOTTLES ONLY) / SANDBLASTED SSPC SP6
 - INTERNALLY PICKLED & OILED (SUCTION BOTTLES ONLY) / SANDBLASTED SSPC SP6
 - ALL VESSEL CONNECTIONS SHALL BE FLANGED
4. CUSTOMER NOTES
 - COLOR OF PACKAGE: - GRATING BLACK
 - UNIT BATTLESHIP GREY
 - EXTERIOR, ALUMINIUM INTERIOR

SOUR GAS SERVICE 220,000ppm

PO	EM	Y	PROCESS and INSTRUMENTATION FLOW DIAGRAM
SCALE	N.T.S.		
CHK'D	RELIANCE 800HP / DRESSER RAND DF6XH2 / AIR-X 108AEF		

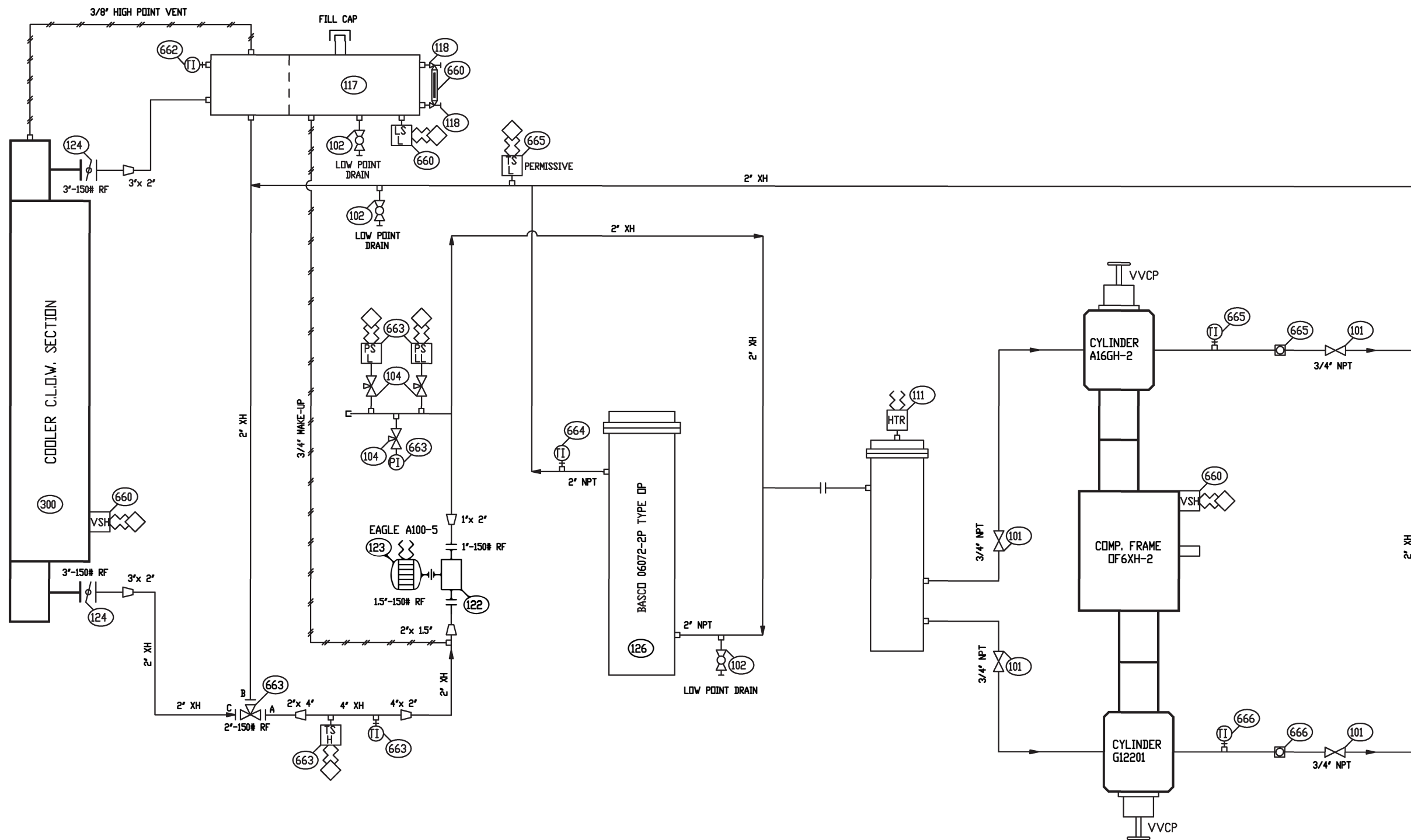
REV	DATE	DESCRIPTION
D	MAR30	FINAL UPDATE
C	FEB 07	PER CAPER MARK-UP
B	JAN 28	SWEET SIDESTREAM REMOVED
A	DEC08	AS PER CAPER MEETING



- | | | |
|----------------------|--------------------------|--|
| ○ BILL OF MAT'L TAG | ↗ SWING CHECK VALVE | LLC LIQUID LEVEL CONTROLLER |
| ⬡ PNEUMATIC TAG | ⊘ PISTON CHECK VALVE | LSH LEVEL SENSOR - HIGH |
| ◇ ELECTRICAL TAG | ⊘ CONTROL VALVE | LSL LEVEL SENSOR - LOW |
| Ⓟ PRESSURE GAUGE | ⊘ REGULATOR VALVE | ● LEVEL SENSOR / SIGHT GLASS |
| Ⓢ DIFF. PRESS. GAUGE | ⊘ REGULATOR/RELIEF VALVE | PSL PRESSURE SENSOR - LOW / HIGH |
| Ⓣ THERMOMETER | ⊘ THERMOSTAT VALVE | TSH TEMPERATURE SENSOR - HIGH |
| Ⓜ GAUGE IN PANEL | ⊘ LUBRICATOR | RTD RESISTANT TEMPERATURE DETECTOR |
| Ⓜ SENSOR IN PANEL | ⊘ "Y" - STRAINER | — MAIN PROCESS PIPING |
| ⊘ GATE VALVE | ⊘ SIGHT FLOW INDICATOR | — SMALL PROCESS / UTILITY PIPING |
| ⊘ BALL VALVE | ⊘ ORIFICE | - - - FUTURE PIPING / PIPING BY OTHERS |
| ⊘ GLOBE VALVE | ⊘ OVERSPEED SENSOR | — INST. TUBING AIR, GAS, or OIL |
| ⊘ NEEDLE VALVE | ⊘ VIBRATION SENSOR | —*—* CAPILLARY TUBING |

DRAWN		DISTANCE PIECE VENT & DRAIN SYSTEM RELIANCE 800HP / DRESSER RAND DF6XH2 / AIR-X 108AEF
DATE	MAR31/2014	
SCALE	N.T.S.	
CHK'D		

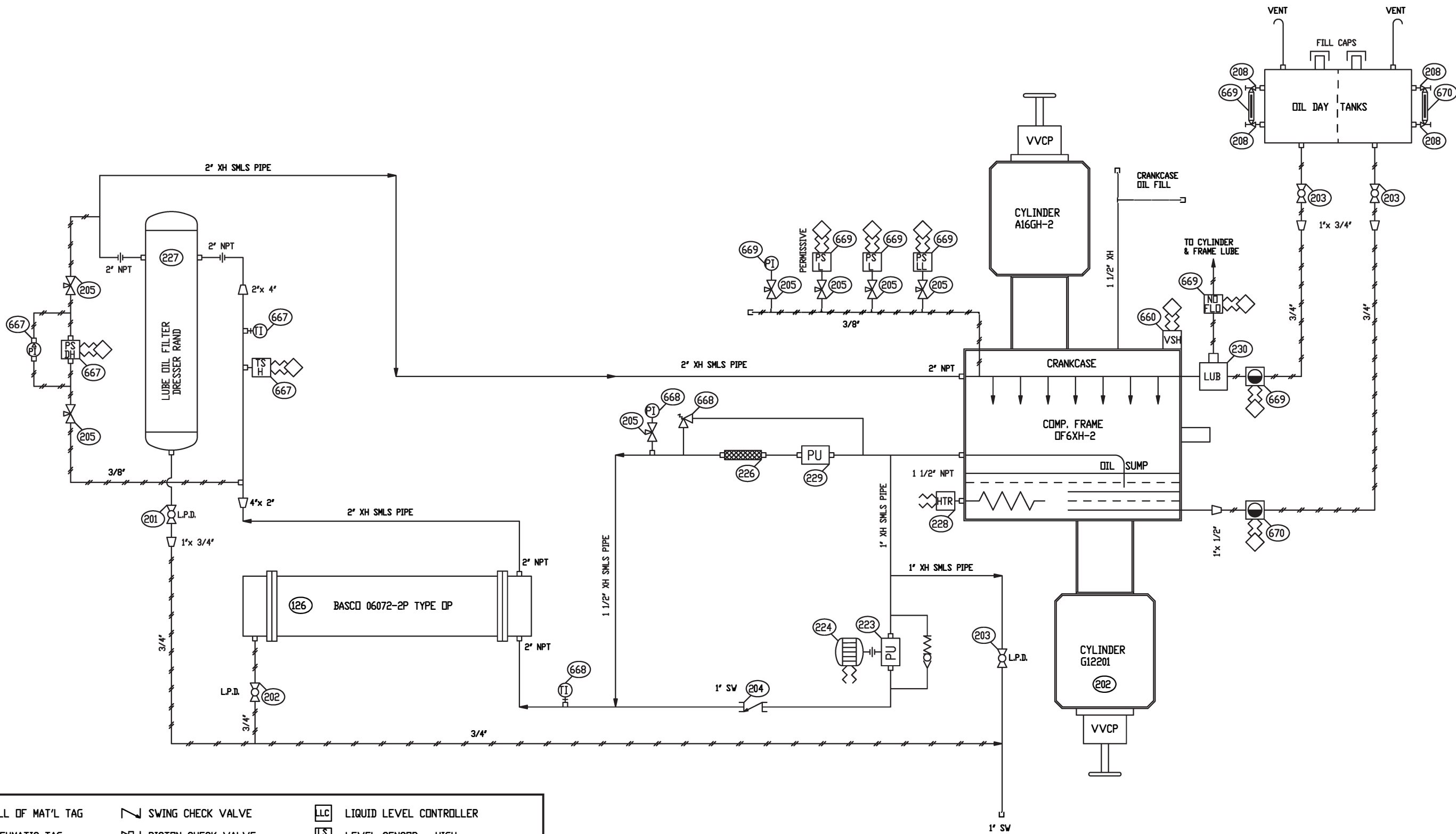
REV	DATE	DESCRIPTION



- | | | |
|----------------------|--------------------------|--|
| ○ BILL OF MAT'L TAG | ↗ SWING CHECK VALVE | LLC LIQUID LEVEL CONTROLLER |
| ⬡ PNEUMATIC TAG | ↘ PISTON CHECK VALVE | LSH LEVEL SENSOR - HIGH |
| ◇ ELECTRICAL TAG | ⊗ CONTROL VALVE | LSL LEVEL SENSOR - LOW |
| Ⓜ PRESSURE GAUGE | ⊗ REGULATOR VALVE | ● LEVEL SENSOR / SIGHT GLASS |
| Ⓜ DIFF. PRESS. GAUGE | ⊗ REGULATOR/RELIEF VALVE | PSL PRESSURE SENSOR - LOW / HIGH |
| Ⓜ THERMOMETER | ⊗ THERMOSTAT VALVE | TSH TEMPERATURE SENSOR - HIGH |
| Ⓜ GAUGE IN PANEL | ⊕ LUBRICATOR | RTD RESISTANT TEMPERATURE DETECTOR |
| Ⓜ SENSOR IN PANEL | ⊗ Y - STRAINER | — MAIN PROCESS PIPING |
| ⊗ GATE VALVE | ⊗ SIGHT FLOW INDICATOR | — SMALL PROCESS / UTILITY PIPING |
| ⊗ BALL VALVE | ⊗ ORIFICE | - - - FUTURE PIPING / PIPING BY OTHERS |
| ⊗ GLOBE VALVE | Ⓜ OVERSPEED SENSOR | — INST. TUBING AIR, GAS, or OIL |
| ⊗ NEEDLE VALVE | Ⓜ VIBRATION SENSOR | ⊗ CAPILLARY TUBING |

DRAWN		COMPRESSOR COOLING WATER/GLYCOL SYSTEM RELIANCE 800HP / DRESSER RAND DF6XH2 / AIR-X 108AEF
DATE		
SCALE	N.T.S.	
CHK'D		

REV	DATE	DESCRIPTION



- | | | |
|----------------------|--------------------------|--|
| ○ BILL OF MAT'L TAG | ↗ SWING CHECK VALVE | LLC LIQUID LEVEL CONTROLLER |
| ⬡ PNEUMATIC TAG | ⌘ PISTON CHECK VALVE | LSH LEVEL SENSOR - HIGH |
| ◇ ELECTRICAL TAG | ⌘ CONTROL VALVE | LSL LEVEL SENSOR - LOW |
| Ⓜ PRESSURE GAUGE | ⌘ REGULATOR VALVE | LSV LEVEL SENSOR / SIGHT GLASS |
| Ⓜ DIFF. PRESS. GAUGE | ⌘ REGULATOR/RELIEF VALVE | PSL PRESSURE SENSOR - LOW / HIGH |
| Ⓜ THERMOMETER | ⌘ THERMOSTAT VALVE | TSH TEMPERATURE SENSOR - HIGH |
| Ⓜ GAUGE IN PANEL | ⌘ LUBRICATOR | RTD RESISTANT TEMPERATURE DETECTOR |
| Ⓜ SENSOR IN PANEL | ⌘ "Y" - STRAINER | — MAIN PROCESS PIPING |
| ⌘ GATE VALVE | ⌘ SIGHT FLOW INDICATOR | — SMALL PROCESS / UTILITY PIPING |
| ⌘ BALL VALVE | ⌘ ORIFICE | - - - FUTURE PIPING / PIPING BY OTHERS |
| ⌘ GLOBE VALVE | Ⓜ OVERSPEED SENSOR | — INST. TUBING AIR, GAS, or OIL |
| ⌘ NEEDLE VALVE | Ⓜ VIBRATION SENSOR | ⌘ CAPILLARY TUBING |

COMPRESSOR LUBE OIL SCHEMATIC
 RELIANCE 800HP / DRESSER RAND DF6XH2 / AIR-X 108AEF

REV	DATE	DESCRIPTION
