



#1925

# 800HP 22% Sour Electric Reciprocating Compressor

*FOR IMMEDIATE SALE*



Originally built by Enerflex in 1992, this sour package was brought to Select Compression in 2014 for a full retrofit. The package's Dresser-Rand Super Cub was zero-houred, much of the process pipe was replaced, new vessels & bottles were built, and a brand new cooler was purchased. The new home that it was originally slated for could not meet the 4000 volt power requirement of the current installed electric motor, so a new 700HP 480 volt motor was also acquired. That motor has not been installed, however it is inside the package and is included. While 700HP does restrict the capabilities of this compressor one bit, it can still bash a lot of 22% sour gas up to about 400-450psi. Other upgrades completed thus far are the replacement of all control valves with new Fisher products, as well as a new Rem-Vue PLC. While there is quite a bit to do to get this unit field ready (instrumentation, electrical, misc. process pipe installation), the price is reflective of the work that needs to be done for re-deployment.

Best of all, it is conveniently located at a shop that's ready to complete the retrofit!

**FOR IMMEDIATE SALE**

#1925

## 800HP 22% Sour Electric Reciprocating Compressor



<b>Condition</b>	Modernization/Retrofit, Incomplete
<b>Manufactured</b>	Enerflex 1992/ Select Compression 2014
<b>Location</b>	Calgary, Alberta
<b>Registration</b>	Alberta
<b>Status / Availability</b>	Immediate
<b>Service</b>	Sour
<b>Driver</b>	800 HP, 4000 Volt 3 phase and a shipped loose 700HP 480 Volt 3 phase.
<b>Compressor</b>	Dresser-Rand Super Cub, OF6XH2, 2 stage
<b>Cylinders &amp; MAWP</b>	16.500" @ 275 psi. & 11.250" @ 675 psi.
<b>Package MAWP</b>	645 psi.
<b>Control panel</b>	Rem-View 500
<b>Cooler Manufacturer</b>	AXH Air-Coolers, m/n: 108AEF
<b>Additional Notes</b>	Rated up to 22% sour



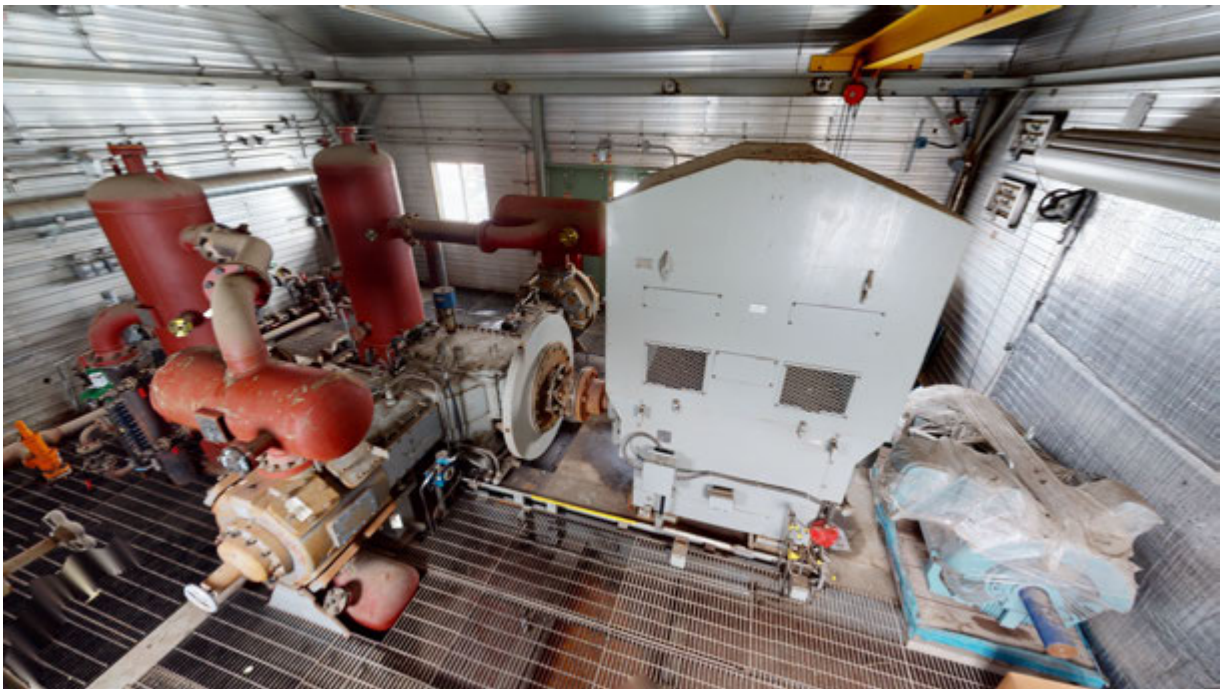
Take a 3D walkthrough at <https://bit.ly/38S6Dzx>

# Sample Performance

*For information only, subject to engineering review.*

Suction Pressure: 40psi	Discharge Pressure: 400psi	141 10 <sup>3</sup> M <sup>3</sup> @ 700 HP
Suction Pressure: 50psi	Discharge Pressure: 550psi	157 10 <sup>3</sup> M <sup>3</sup> @ 800 HP







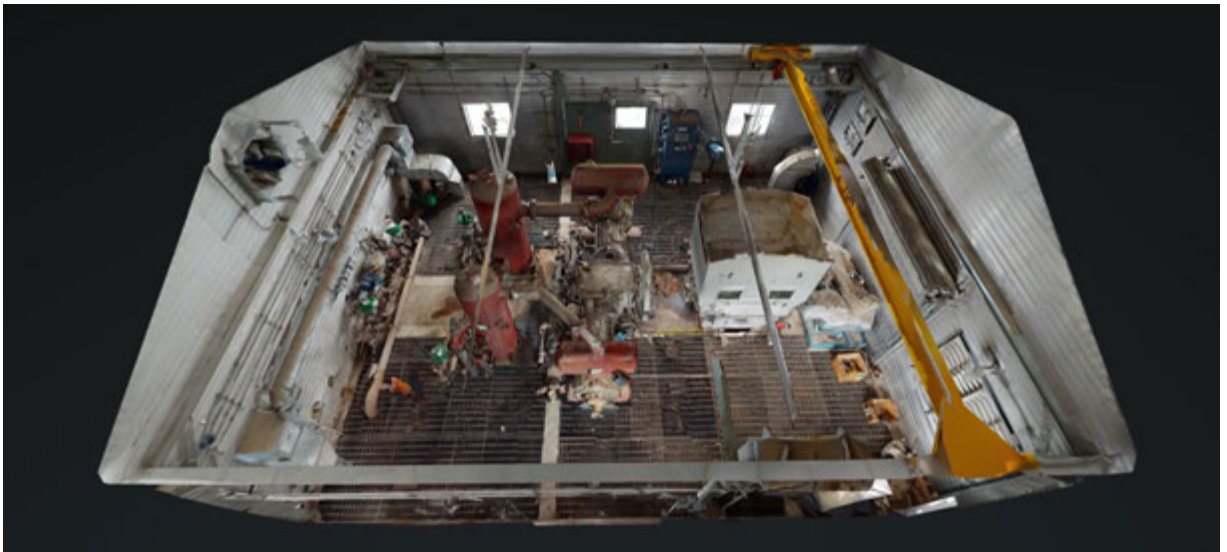












Take a 3D walkthrough at <https://bit.ly/38S6Dzx>