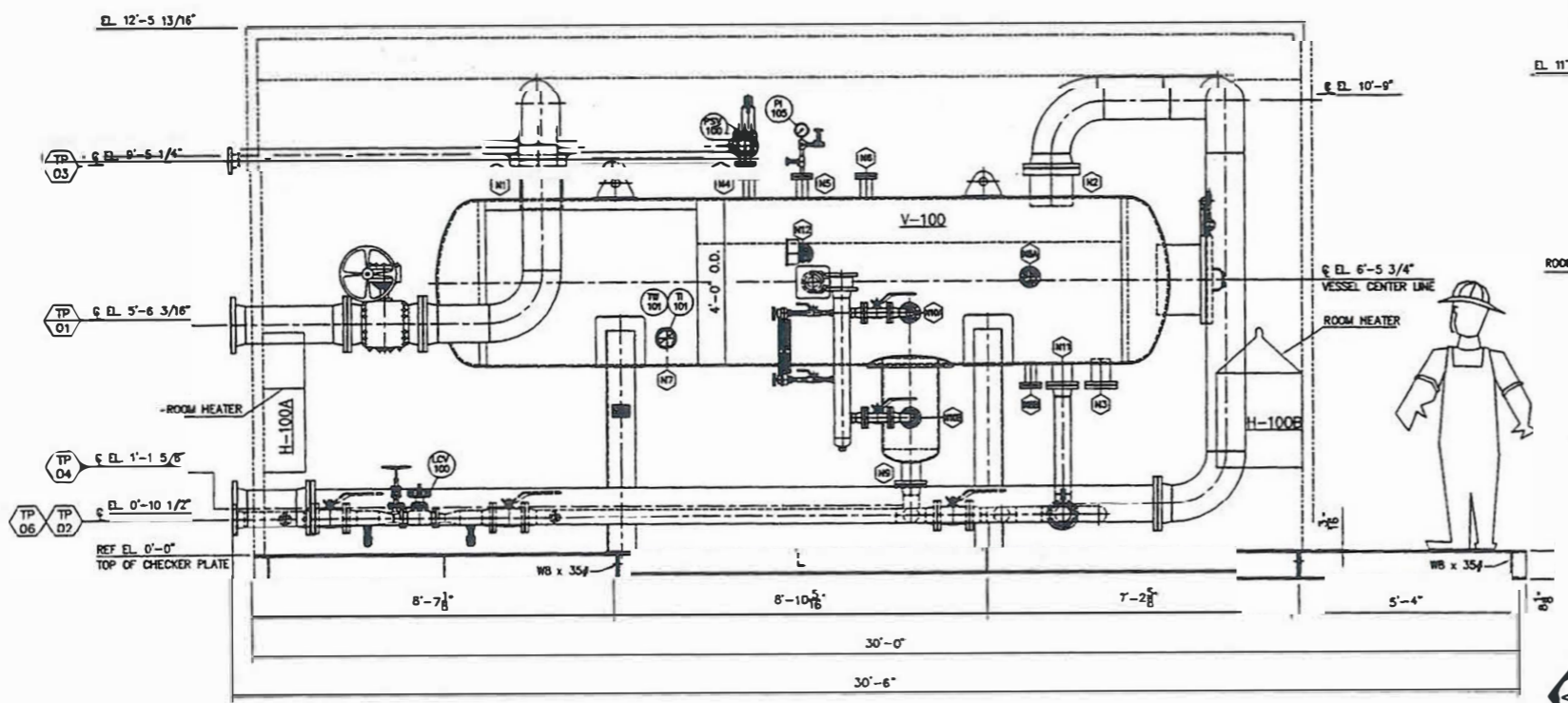
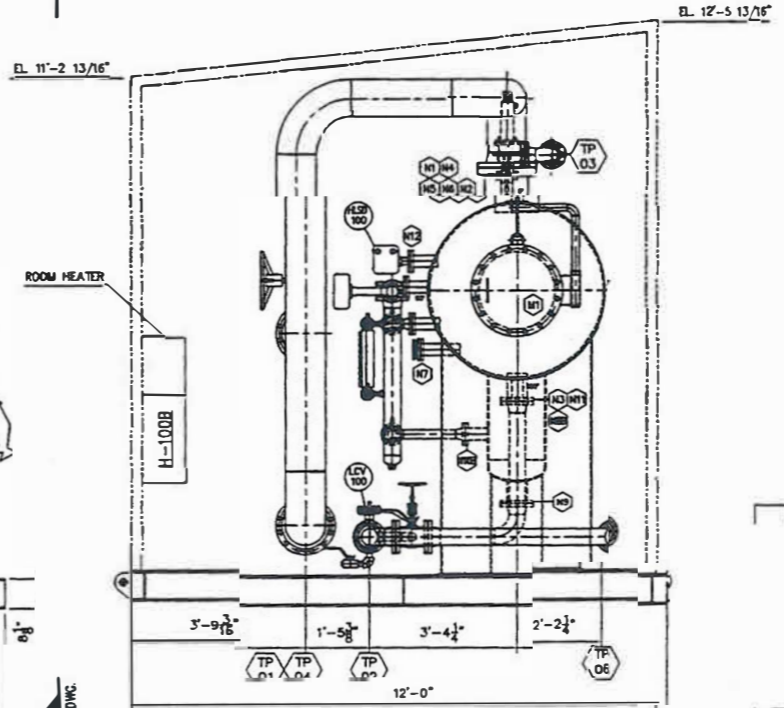


PLAN
(SCALE: 1/2"=1'-0")

TIE-IN POINT DESCRIPTION	
TIE-IN POINT No.	DESCRIPTION
TP-01	10" CL-150 ANSI RFWN - INLET
TP-02	4" CL-150 ANSI RFWN - PRODUCED WATER OUTLET
TP-03	3" CL-150 ANSI RFWN - TO FLARE HEADER
TP-04	10" CL-150 ANSI RFWN - GAS OUTLET
TP-05	NOT SHOWN (FUEL GAS INLET)
TP-06	4" CL-150 ANSI RFWN - TO DRAIN HEADER



ELEVATION
(SCALE: 1/2"=1'-0")



VIEW
SCALE: 1/7"=1'-0" THIS DWG.

- GENERAL NOTES:**
1. ALL DIMENSIONS ARE IN FEET-INCHES, UNLESS OTHERWISE SPECIFIED.
 2. THE NORTH LOCATION IS NOT TRUE.
 3. APPROX. SHIPPING WEIGHT: 45,000 LBS. HOLD
 4. PROTECT ALL OPENING FOR SHIPMENT.
 5. LENGTH OF METER RUN IS ASSUMED AS 20'-0" F/F CLIMB TO CONTROL.
 6. HANDLES FOR THE MANUAL VALVES TO BE CUT AS REQUIRED.

- REFERENCE DRAWINGS:**
1. P&ID DRAWING No. 30-E-02016

KGS	ADP	GLK	ISSUED FOR APPROVAL
REV. BY	CHKD BY	APPRD BY	DESCRIPTION
REVISIONS			
ENGINEERED AND DESIGN BY			
NISKU		CANADA	
WEB PAGE: WWW.BSB.AB.CA			
<small>"NECESSARY DATA" IS INCLUDED IN THE INFORMATION INCLUDED HEREIN AND IS THE SOLE PROPERTY OF BLACK SHALLS & BYRNE (CANADA) LTD. THIS INFORMATION IS SUBMITTED IN CONFIDENCE AND NOTWITHSTANDING THIS DECLARATION THE INFORMATION CONTAINED HEREIN SHALL BE REPRODUCED OR OTHERWISE DISCLOSED OR RELEASED TO OTHERS FOR ANY PURPOSE EXCEPT AS SPECIFICALLY AUTHORIZED BY WRITING BY BLACK SHALLS & BYRNE (CANADA) LTD.</small>			
TITLE: GENERAL ARRANGEMENT DRAWING FOR 48" O.D. x 15'-0" S/S LG. (280 PSIG) 2/3 PHASE HORIZONTAL SEPARATOR (V-100)			
CUSTOMER:			
LOCATION:	CANADA	DATE:	SEP.28/06
S.O. NUMBER:	P.O. NUMBER:	SCALE:	1/2"=1'-0"

