

CJV#1923

Up to 500 m³/d & 360 psi Hydraulic Driven Transfer Pump Packages

Low cost oil or water transfer packages that pump up to **500 m³/day and 360 psi discharge pressure for less than \$25K.**

If you need to move some oil or water around, or if you have a small disposal site that doesn't need much pressure, here is a great pump for you. Built by Crimtech in 2007 and only run for a couple of years, each package features a small Seepex progressive cavity pump, sour rated 300# piping c/w mass flow meter, ESD, and various shut downs. They are all housed inside little 9' x 7' buildings with checker plate flooring, Catadyne heat, and a sump.



To manufacture a new, basic pump package that would do similar flow/pressure would cost between \$30k-40k. but it wouldn't have this much instrumentation like an ESD, flow meter, bypass etc. With these you can have every one for between \$12k-25k each depending on what pump model you want (BN5, 17 or 34) and condition of package overall. You can take four of them on a truck at a time, so shipping is easy and cheap.



You'll need a hydraulic power package to run these. Again, we can convert these to electric if you want, but typically oil companies will have several of these in their inventory - If not, they are laying all over the country and are reliable, simple, and cheap to overhaul.

General Equipment Configuration

<p>Package Overview</p>	<p>Crimtech Services 2007 Designed for up to 285psi Inlet pressure, 300# Discharge Pressure One (1) SEEPEX BN5 OR BNI7 Progressive cavity pump One (1) Gear Style Hydraulic motor direct drive to PC pump inc. male & female direct quick couplers</p>
<p>Piping & Instrumentation</p>	<p>3" basket strainer (w/ drain to sump) CCS dual snap pressure switches (PSHH 100, 101) CCS dual snap temp switch (TSH 100) 1x1 Endress + Hauser vortex flow meter <u>w/ bypass</u> Hydraulic actuated, Bettis ESD control valve Skid edge piping connection: 3" 150# Inlet, 2" 600# Discharge, 1" Drains</p>
<p>Building</p>	<p>9' L x 7' W x 9' H Shed Style building w/ ice rakes, eaves and downspouts One (1) Single Man door with window One (1) Catadyne Heater Suction piping, basket strainer, and discharge piping piped with 1" pipe to floor Sump with grating Weighted louvers End devices wired to JB's</p>
<p>Price & Availability</p>	<p>Variety of Seepex BN5 and BNI7 Models. Price variance is based on visual condition and model of pump. Price Range ~\$12-18k for BN5; \$16-22k for BNI7 "As Is, Where Is" Parts availability is good (stock to 2 weeks, local supplier).</p>

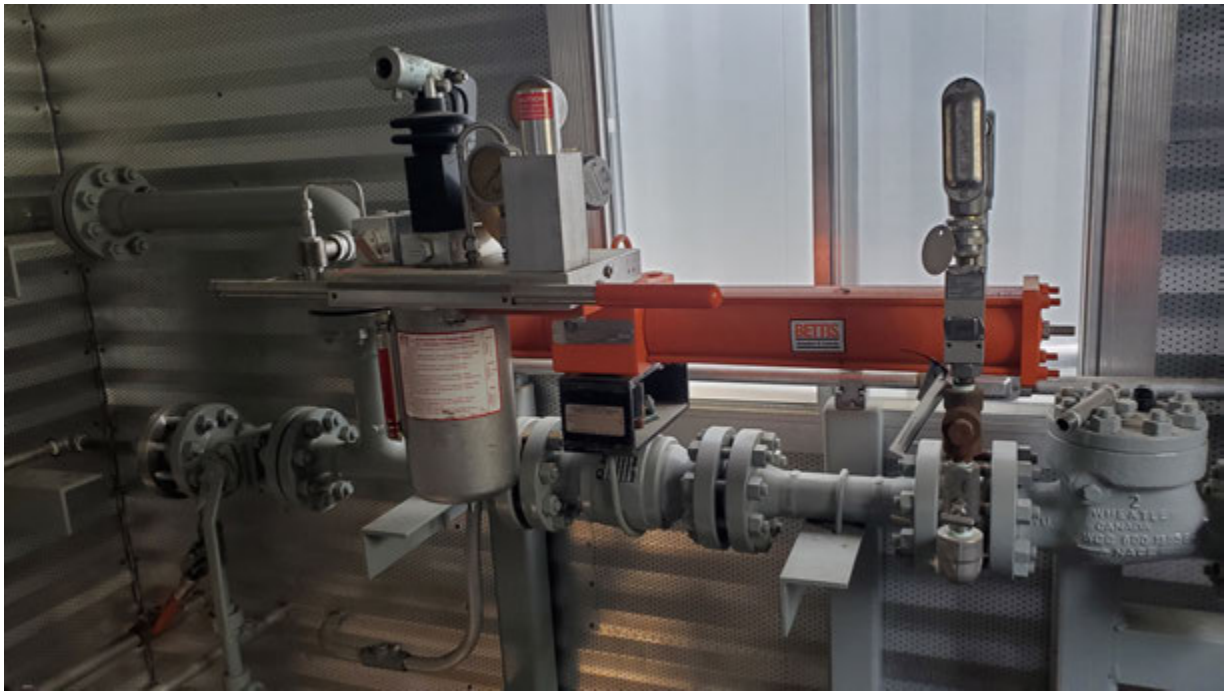


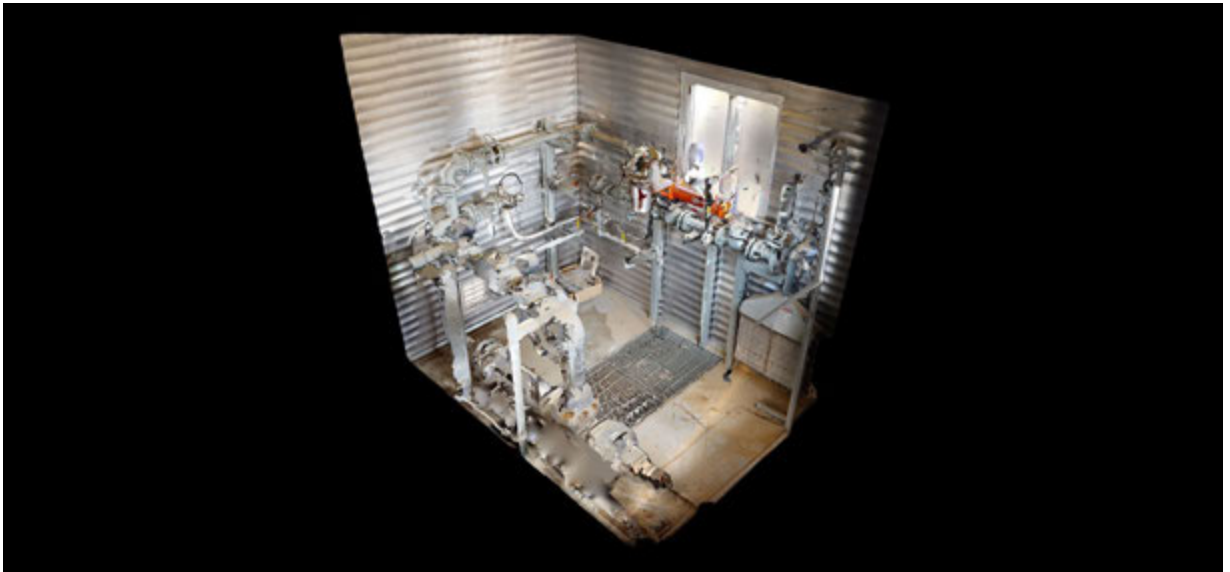
Take a 3D walkthrough at <https://bit.ly/38cNZlq>











Take a 3D walkthrough at <https://bit.ly/38cNZlq>