

A row of industrial pump packages, which are large metal cabinets with doors, sitting on a gravel surface. The packages are arranged in a line, receding into the distance. The image is in grayscale with a dark overlay.

#1923

Up to 500 m³/d & 360 psi Hydraulic Driven Transfer Pump Packages

FOR IMMEDIATE SALE

Low cost oil or water transfer packages that pump up to **500 m³/day and 360 psi discharge pressure for less than \$25K.**

If you need to move some oil or water around, or if you have a small disposal site that doesn't need much pressure, here is a great pump for you. Built by Crimtech in 2007 and only run for a couple of years, each package features a small Seepex progressive cavity pump, sour rated 300# piping c/w mass flow meter, ESD, and various shut downs. They are all housed inside little 9' x 7' buildings with checker plate flooring, Catadyne heat, and a sump.



To manufacture a new, basic pump package that would do similar flow/pressure would cost between \$30k-40k. but it wouldn't have this much instrumentation like an ESD, flow meter, bypass etc. With these you can have every one for between \$12k-25k each depending on what pump model you want (BN5, 17 or 34) and condition of package overall. You can take four of them on a truck at a time, so shipping is easy and cheap.



You'll need a hydraulic power package to run these. Again, we can convert these to electric if you want, but typically oil companies will have several of these in their inventory - If not, they are laying all over the country and are reliable, simple, and cheap to overhaul.

General Equipment Configuration

Package Overview	<p>Crimtech Services 2007</p> <p>Designed for up to 285psi Inlet pressure, 300# Discharge Pressure</p> <p>One (1) SEEPEX BN5 OR BN17 Progressive cavity pump</p> <p>One (1) Gear Style Hydraulic motor direct drive to PC pump inc. male & female direct quick couplers</p>
Piping & Instrumentation	<p>3" basket strainer (w/ drain to sump)</p> <p>CCS dual snap pressure switches (PSHH 100, 101)</p> <p>CCS dual snap temp switch (TSH 100)</p> <p>1 x 1 Endress + Hauser vortex flow meter <u>w/ bypass</u></p> <p>Hydraulic actuated, Bettis ESD control valve</p> <p>Skid edge piping connection: 3" 150# Inlet, 2" 600# Discharge, 1" Drains</p>
Building	<p>9' L x 7' W x 9' H Shed Style building w/ ice rakes, eaves and downspouts</p> <p>One (1) Single Man door with window</p> <p>One (1) Catadyne Heater</p> <p>Suction piping, basket strainer, and discharge piping piped with 1" pipe to floor</p> <p>Sump with grating</p> <p>Weighted louvers</p> <p>End devices wired to JB's</p>
Price & Availability	<p>Variety of Seepex BN5 and BN17 Models.</p> <p>Price variance is based on visual condition and model of pump.</p> <p>Price Range ~\$12-18k for BN5; \$16-22k for BN17</p> <p>"As Is, Where Is"</p> <p>Parts availability is good (stock to 2 weeks, local supplier).</p>

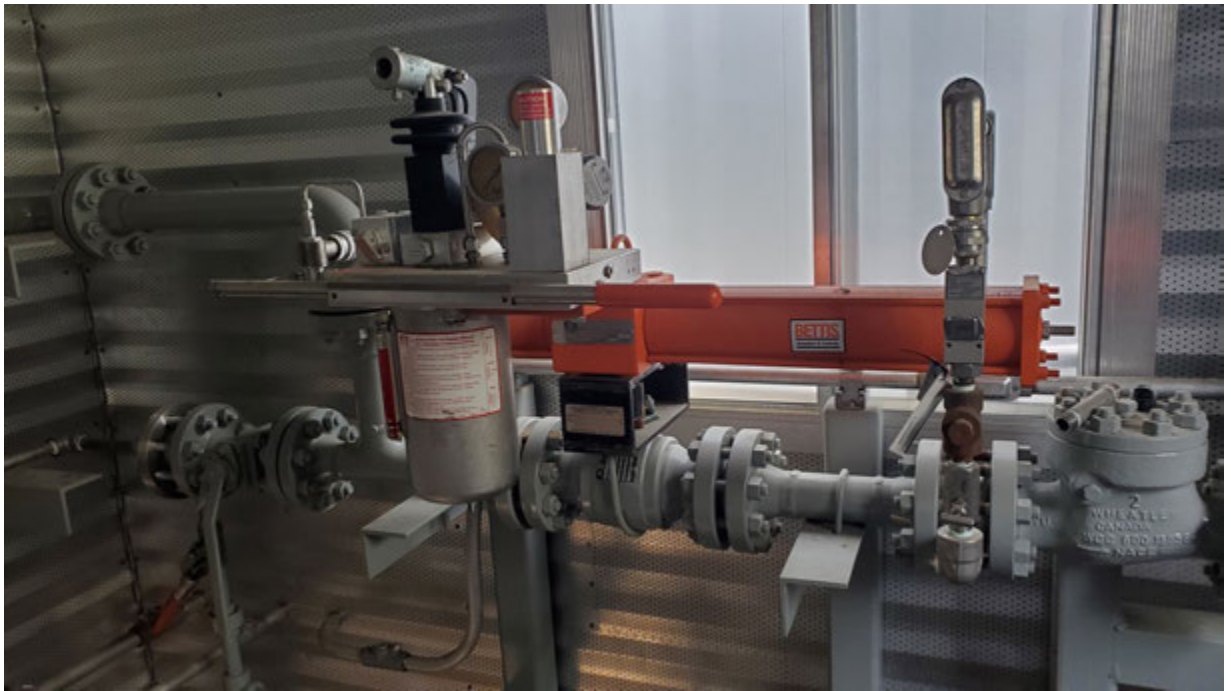


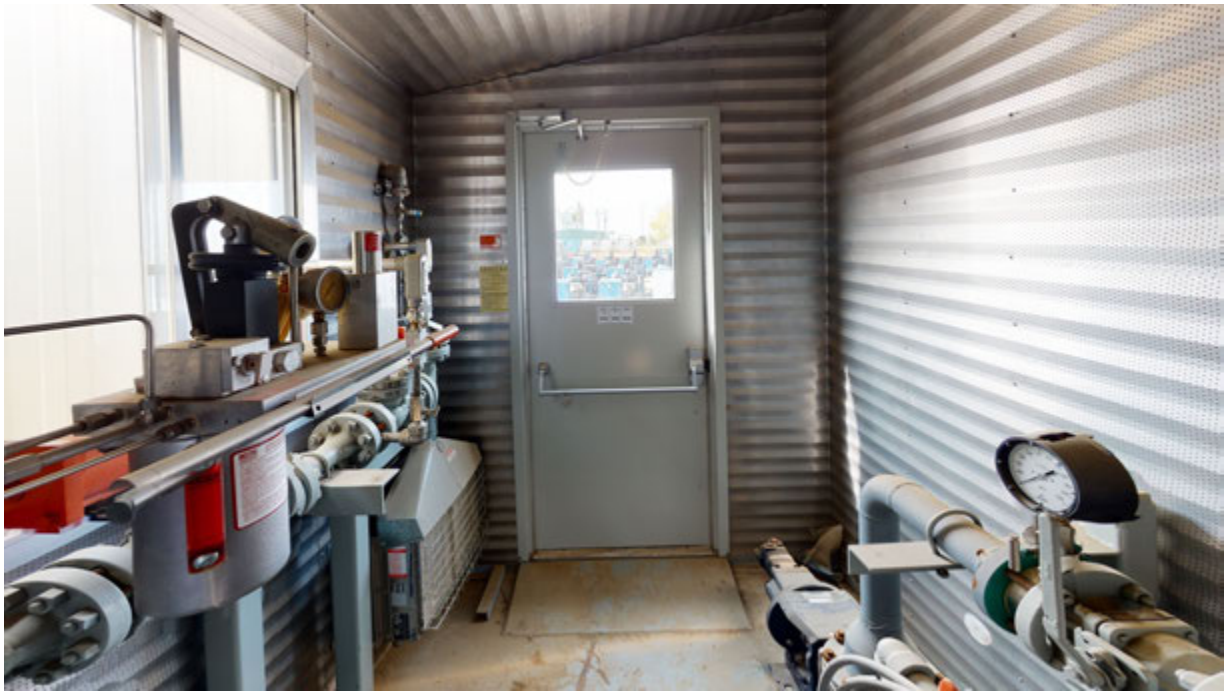
Take a 3D walkthrough at <https://bit.ly/38cNZlq>











Take a 3D walkthrough at <https://bit.ly/38cNZlq>