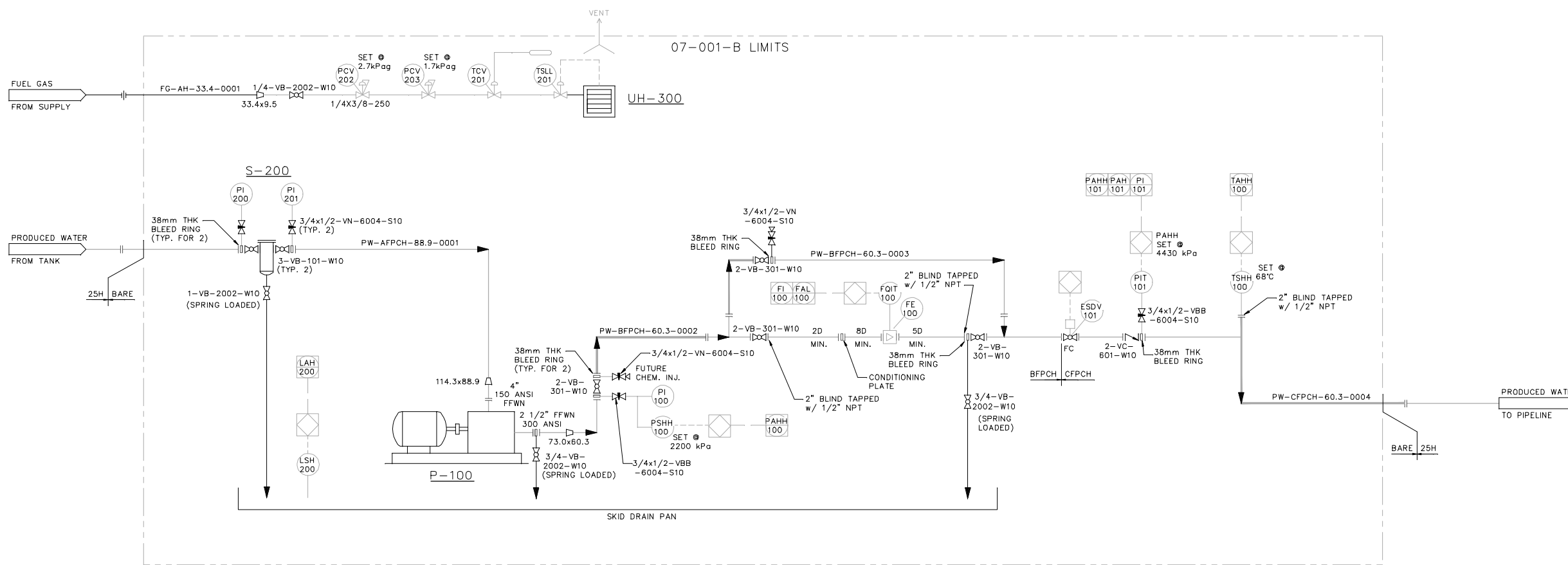


S-200
BASKET STRAINER
 88.9mm Ø 150 ANSI
 0.125" PERFORATED BASKET
 C/W 22.4mm TAP FOR DRAIN

P-100
WATER TRANSFER PUMP
 PROGRESSIVE CAVITY PUMP
 MAKE: SEEPEX
 MODEL: BNS-12V/A6-A7-A7-FO-A-X
 CAPACITY: 100cu.m/day @ 396rpm
 DRIVE: HYDRAULIC, 10gpm at 1500psi for 390rpm
 TRIM: 316 SS
 MAX DISCHARGE PRESSURE: 2413 kPag

UH-300
BUILDING HEATER
 TYPE: CATADYNE HEATER
 MODEL: WX 18x24
 DUTY: 12000 BTU/HOUR

O7-001-B
WATER TRANSFER SKID
 MAKE: CRIMTECH
 MODEL: M0.5-266B-VMT-000-CEP
 SIZE: 2108mmLx2794mmWx2750mmH
 DESIGNED : 2007
 PUMP STYLE : B



NOTES

- 1 MAXIMUM INLET PRESSURE 266 psig. UNIT DESIGNED TO 1440 psig.
- 2 ALL INSTRUMENTS ARE VENTED OUTSIDE.
- 3 UNIT DESIGNED TO MEET HUSKY PIPING SPECIFICATIONS AS SHOWN. EXCEPTIONS: NO LOW TEMP MATERIALS TO BE USED
- 4 SET PRESSURES EXCLUDING PSV'S TO BE FIELD SET.
- 5 DRAIN LINES ARE TO BE CAPPED FOR HYDROTEST.

ENGINEERING COMPANY PERMIT STAMP REGISTERED PROFESSIONAL ENGINEER STAMP

APEGGA PERMIT
 P04623
 APEGS PERMIT
 C1497

6		
5		
4		
3		
2		
1		

REF	DRAWING NUMBER	DRAWING TITLE
-----	----------------	---------------

REFERENCE DRAWINGS				

REV	DATE	DESCRIPTION	BY	CHK	ENG	APR
2	2013/01/04	IFC FOR MOC 11-040 (2013 FLOWLINING PROJECTS)	BOB	CA	CA	CA
1	2013/01/03	COPY FROM L7-PI-0050-02 (BAR)	BAR			

REVISION HISTORY

TITLE **WATER TRANSFER SKID
 PIPING & INSTRUMENTATION DIAGRAM**

SURFACE LOCATION L7 GENERAL

ALTERNATE DWG NUMBER	REV NO
L7-PI-0050-05	2

VENDOR DWG NUMBER	SCALE
	NTS

AMU/FLOC NUMBER	DCN NO	PROJECT NO	MOC 11-040
-----------------	--------	------------	------------