

NOZZLE SCHEDULE			
MARK	SERVICE	SIZE	RATING TYPE
1	INITIAL SUCTION	10"	150# RFWN
2	FINAL DISCHARGE	3"	600# RFWN
3	HIGH PRESSURE VENT HEADER	6"	150# RFWN
4	SCRUBBER DRAIN HEADER	2"	300# RFWN
5	FUEL GAS SUPPLY	2"	150# RFWN
6	GLYCOL FILL	3/4"	HOSE
7	CYLINDER OIL DAYTANK FILL	1"	3000# FNPT
8	ENGINE/COMPR. OIL DAYTANK FILL	1"	3000# FNPT
9	GLYCOL TANK DRAIN	2"	3000# MNPT
10	WASTE OIL TANK DRAIN	2"	3000# MNPT
11	GLYCOL STAND PIPE	2"	3000# MNPT
12	START GAS VENT	3"	150# RFWN
13	LOW PRESSURE VENT HEADER	1"	PIPE
14	LOW PRESSURE PUMP VENT HEADER	1"	PIPE
15	LOCAL COMPRESSOR OIL FILL	2"	3000# MNPT
16	START GAS SUPPLY	2"	150# RFWN
17	FUTURE START GAS VENT TIE-IN	3"	150# RFWN
18	-	-	-

GENERAL SPECIFICATIONS	
OVERALL PACKAGE LENGTH	46'-9"
OVERALL PACKAGE WIDTH (c/w BLDG.)	25'-9 1/8"
OVERALL PACKAGE HEIGHT (w/o MUFFLER & STACK)	20'-8 9/16"
OVERALL PACKAGE WEIGHT (LBS) (ESTIMATED)	220,000
GLYCOL STORAGE CAPACITY (US GAL)	438
WASTE OIL STORAGE CAPACITY (US GAL)	438
SOUR WASTE OIL STORAGE CAPACITY (US GAL)	N/A
LUBE OIL DAYTANKS (US GAL/EACH)	135
BRIDGE CRANE RATING	3 TON
SEAL PAN	<input checked="" type="checkbox"/> FLAT <input type="checkbox"/> NONE <input type="checkbox"/> SLOPED
LOADING METHOD	<input type="checkbox"/> LIVE ROLL <input type="checkbox"/> CRANE <input checked="" type="checkbox"/> JACK & ROLL

- NOTES:
1. ALL (Z) DIMENSIONS TAKEN FROM BOTTOM OF SKID.
  2. ALL OTHER NOTES FOUND ON DWG. #PFLOW.
  3. ALL SKID EDGE CONNECTIONS ±1/8" TOLERANCE.
  4. ALL TAIL DIMENSIONS FROM REFERENCE POINT.
  5. DIMENSIONS FOR SCRUBBER DRAIN & FUTURE START GAS TIE-IN HEADERS ARE FOR REFERENCE ONLY. SHOP TO FIT.

ALL INFORMATION CONTAINED HEREIN IS THE PROPERTY OF TOROMONT ENERGY SYSTEMS INC. NO PART OF THIS DOCUMENT IS TO BE REPRODUCED OR DISTRIBUTED WITHOUT THE WRITTEN CONSENT OF TOROMONT ENERGY SYSTEMS INC.

**TOROMONT ENERGY SYSTEMS**

**APR 16 2007**

**AS BUILT**

PER \_\_\_\_\_

FILE NAME: N:\31658 EDC\Drawing\31658-MODEL REV1.dwg  
 PLOT DATE: Mar 07, 2007 2:06pm  
 PLOTTED BY: 33366n

ALL INFORMATION CONTAINED HEREIN IS THE PROPERTY OF TOROMONT ENERGY SYSTEMS INC. NO PART OF THIS DOCUMENT IS TO BE REPRODUCED OR DISTRIBUTED WITHOUT THE WRITTEN CONSENT OF TOROMONT ENERGY SYSTEMS INC.

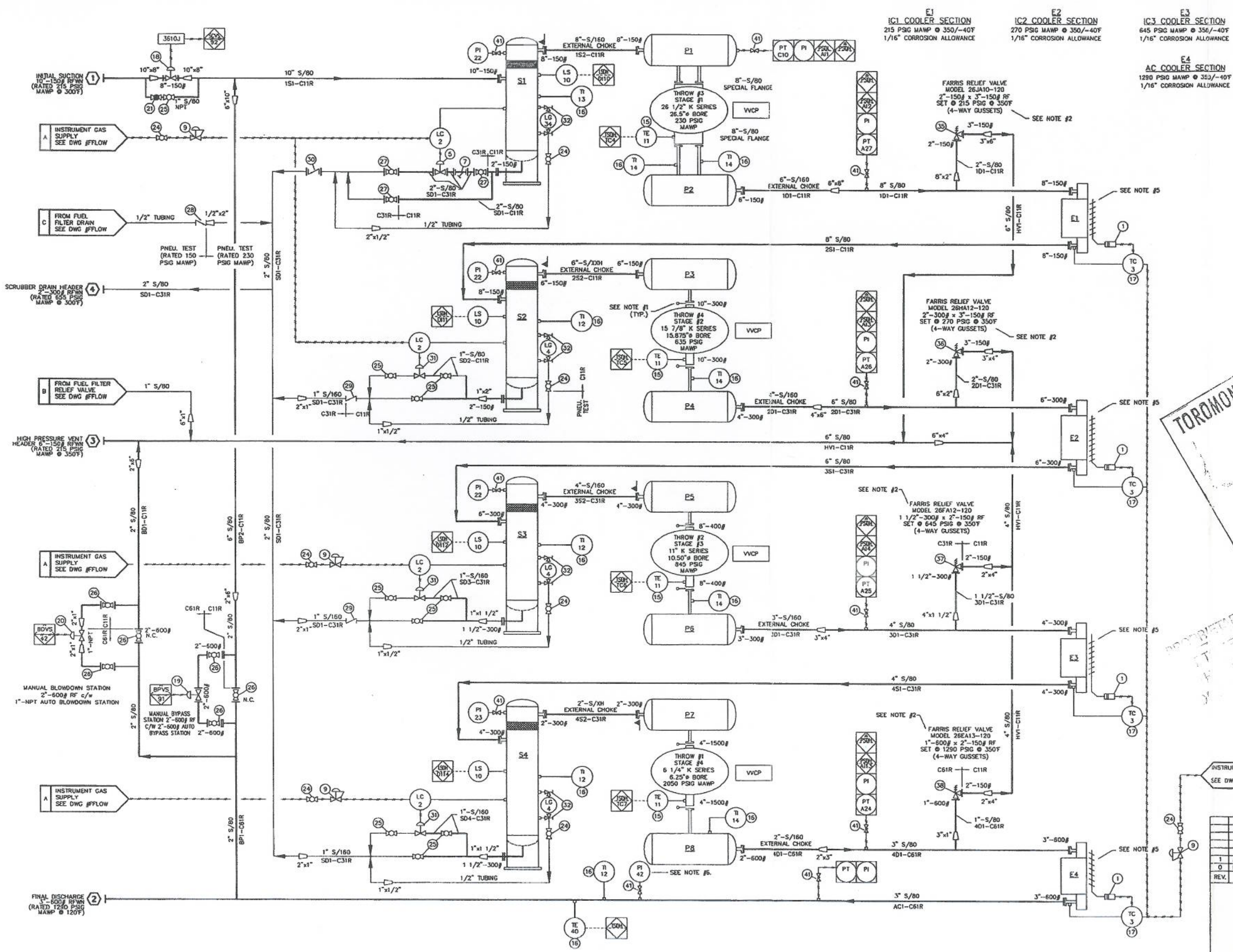
PLAN VIEW

REV.	DESCRIPTION	DATE	BY	APPR.	DATE
1	AS BUILT	01/19/07	GG		
0	ISSUED FOR CONSTRUCTION	06/13/06	GG		

		TITLE: PLAN VIEW - GENERAL ARRANGMENT	
DRAWN BY: HAGAN DATE: 07/29/05 SCALE: 1/2"=1'-0" W.S. NO: 31658	FOR: EDG RESOURCES CANADA INC. c/o BDR ENGINEERING LTD. GAS COMPRESSOR	ENGINEER STAMP	SHEET No: 1 OF 1

THE INFORMATION CONTAINED HEREIN IS THE CONFIDENTIAL PROPERTY OF TOROMONT ENERGY SYSTEMS INC. AND IS NOT FOR PUBLICATION, AND NO PART THEREOF SHALL BE COPIED OR COMMUNICATED TO A THIRD PARTY WITHOUT AUTHORIZATION FROM TOROMONT ENERGY SYSTEMS INC.

S1	S2	S3	S4	P1	P2	P3	P4	P5	P6	P7	P8
36" x 78" S/S	30" x 72" S/S	20" x 66" S/S	16" x 58" S/S	30" x 44" S/S	24" x 44" S/S	24" x 40" S/S	20" x 40" S/S	20" x 36" S/S	18" x 30" S/S	18" x 34" S/S	16" x 26" S/S
230 PSIG MAMP @ 300F	230 PSIG MAMP @ 300F	270 PSIG MAMP @ 300F	655 PSIG MAMP @ 300F	230 PSIG MAMP @ 300F	215 PSIG MAMP @ 350F	230 PSIG MAMP @ 300F	270 PSIG MAMP @ 350F	270 PSIG MAMP @ 300F	645 PSIG MAMP @ 350F	655 PSIG MAMP @ 300F	1292 PSIG MAMP @ 350F
1/16" CORROSION ALLOWANCE	1/16" CORROSION ALLOWANCE	1/16" CORROSION ALLOWANCE	1/16" CORROSION ALLOWANCE	1/16" CORROSION ALLOWANCE	1/16" CORROSION ALLOWANCE	1/16" CORROSION ALLOWANCE	1/16" CORROSION ALLOWANCE	1/16" CORROSION ALLOWANCE	1/16" CORROSION ALLOWANCE	1/16" CORROSION ALLOWANCE	1/16" CORROSION ALLOWANCE
S/N: 31658S1	S/N: 31658S2	S/N: 31658S3	S/N: 31658S4	S/N: 31658P1	S/N: 31658P2	S/N: 31658P3	S/N: 31658P4	S/N: 31658P5	S/N: 31658P6	S/N: 31658P7	S/N: 31658P8



**MATERIAL SPECIFICATIONS:**

PAINT: OVERALL UNIT: VALSPAR 20-F-34 "WARM GREY".  
 PRIMER: COMMERCIAL IRON OXIDE NON-LIFTING PRIMER.  
 PROCESS PIPING: S/E X-RAY, 1/16" CORROSION ALLOWANCE. SANDBLAST SPOOLS AFTER SURFACE SCREEN.  
 VESSELS: S/E X-RAY, 1/16" CORROSION ALLOWANCE. INTERNALLY SANDBLAST SUCTION BOTTLES.  
 OIL: ESSOLUBE GMPLUS-40 IN ENGINE & COMPRESSOR FRAME.  
 GLYCOL: 50% ETHYLENE INHIBITED GLYCOL/WATER SOLUTION IN ENGINE & AUXILIARY JACKET WATER SYSTEMS.  
 BILL OF MATERIALS: ON SEPARATE SHEET PROVIDED WITH DRAWING.

TUBING SERVICES	TUBING	FITTINGS
SWEET:	PROCESS	304 (SS) ZINC PLATED (S)
	UTILITY - CONTACTING PROCESS	304 (SS) ZINC PLATED (S)
	INSTRUMENT	304 (SS) ZINC PLATED (S)
	FRAME INTERNALS	304 (SS) ZINC PLATED (S)

NOTE #1: SPACER PLATES ARE PROVIDED FOR FUTURE INSTALLATION OF ORIFICE PLATES (IF REQUIRED).  
 NOTE #2: RELIEF VALVES ARE PAINTED BRIGHT RED.  
 NOTE #3: VESSELS REGISTERED IN AB & SK.  
 NOTE #4: BOLTING ON ALL PROCESS FLANGE CONNECTIONS IS: SA-193-B7 STUDS, SA-194-2H NUTS & 316SS GASKETS.  
 NOTE #5: CUT 1" DRAIN HOLE IN BOTTOM OF COOLER BUGSCREEN ASSEMBLY.  
 NOTE #6: MOUNT P.I. NEAR PANEL.

**GENERAL INFORMATION:**

ENGINE FRAME:  
 - AREL JGK4/4  
 - RATED RPM = 1200  
 - SERIAL NUMBER = F-22779

ENGINE:  
 - WAUKESHA L704ZL  
 - RATED 1478 HP @ 1200 RPM  
 - SERIAL NUMBER = C-16746/1  
 - SPARTAN CONTROLS REMUVE 500S  
 - SERIAL NUMBER = RM-15497-AA

COOLERS:  
 - AIR-X-CHANGERS 156H-114-24  
 - SERIAL NUMBER = 064311

THROWS:  
 - THROW #1 - SERIAL NUMBER = C-73126  
 - THROW #2 - SERIAL NUMBER = C-73127  
 - THROW #3 - SERIAL NUMBER = C-73128  
 - THROW #4 - SERIAL NUMBER = C-73129

**LEGEND:**

- PROCESS
- UTILITY
- PNEUMATIC TUBING
- ELECTRIC WIRING
- SPACER
- SPECTACLE BLIND
- SCREEN (CONE STRAINER)
- PANEL CONNECTION - PNEUMATIC
- PANEL CONNECTION - ELECTRIC
- PANEL ALARM / SHUTDOWN
- LOCAL MOUNTED INSTRUMENT
- PANEL MOUNTED INSTRUMENT
- PNEUMATIC TO ELECTRIC
- ENGINE CONNECTION
- ORIFICE PLATE

SWEET PROCESS GAS

**TOROMONT ENERGY SYSTEMS**  
**APR 16 2007**  
**AS BUILT**  
 PER \_\_\_\_\_

PROPRIETARY MATERIAL  
 IT IS TO BE KEPT UNREPRODUCED OR DISTRIBUTED  
 WITHOUT THE WRITTEN CONSENT OF  
 TOROMONT ENERGY SYSTEMS

REV.	DESCRIPTION	DATE	BY	APPR.	DATE
1	AS BUILT	01/19/07	GG		
0	ISSUED FOR CONSTRUCTION	06/13/06	GG		

ENGINEER STAMP: [Signature]

PROJECT: PROCESS FLOW DIAGRAM

FOR: EOG RESOURCES CANADA INC. c/o BDR ENGINEERING LTD. GAS COMPRESSOR

DATE: 07/26/05

DRW BY: LANGRISH

CHK BY: [Signature]

APP BY: [Signature]

SHEET No: 453 OF 11

FILE NAME: M:\31658\Drawings\Process\31658 PFLOW-1.dwg  
 PLOT DATE: Jun 19, 2007 1:28pm  
 PLOTTED BY: gprean