

#1833

Sour 48" x 16' Presson 1440psi Separator

FOR IMMEDIATE SALE



A clean, well appointed 48" separator package. Built by Presson in 2000, this unit was designed to pump condensate right off the bottom the vessel via dual Wheatley T255M triplex pumps w/ 1.25" plungers. Vessel is a 2 Phase design shut down & blocked in in 2013; opened, cleaned and installed a nitrogen blanket in July 2015. In addition, everything is fully wired to junction boxes c/w lights, fire loop, beacons, ESD, 120V start Catadynes, exhaust fans etc. Located by Rocky Mountain House.

FOR IMMEDIATE SALE

#1833

Sour Presson 48 x 16, 1440psi Separator



Condition	Field Ready &/or Minor Repair
Manufactured	Presson, 2000
Location	Rocky Mountain House, AB
Registration	AB
Status	Connected
Availability	1-2 Weeks for disconnection (included in price)
Inlet / Outlet	6" Inlet / 6" Outlet
Pumps	Two (2) Wheatley T225M Pumps w/ 2.250" Plungers, Top Mount 5HP Motors
Service	Sour
Dimensions	Skid & building are 11' W x 36' L Shipping dimensions are with prover lines removed as well as door & outside light hoods 13' 5" W x 38' 6" L x 17' H including ridge vent. (16'6" + 6")



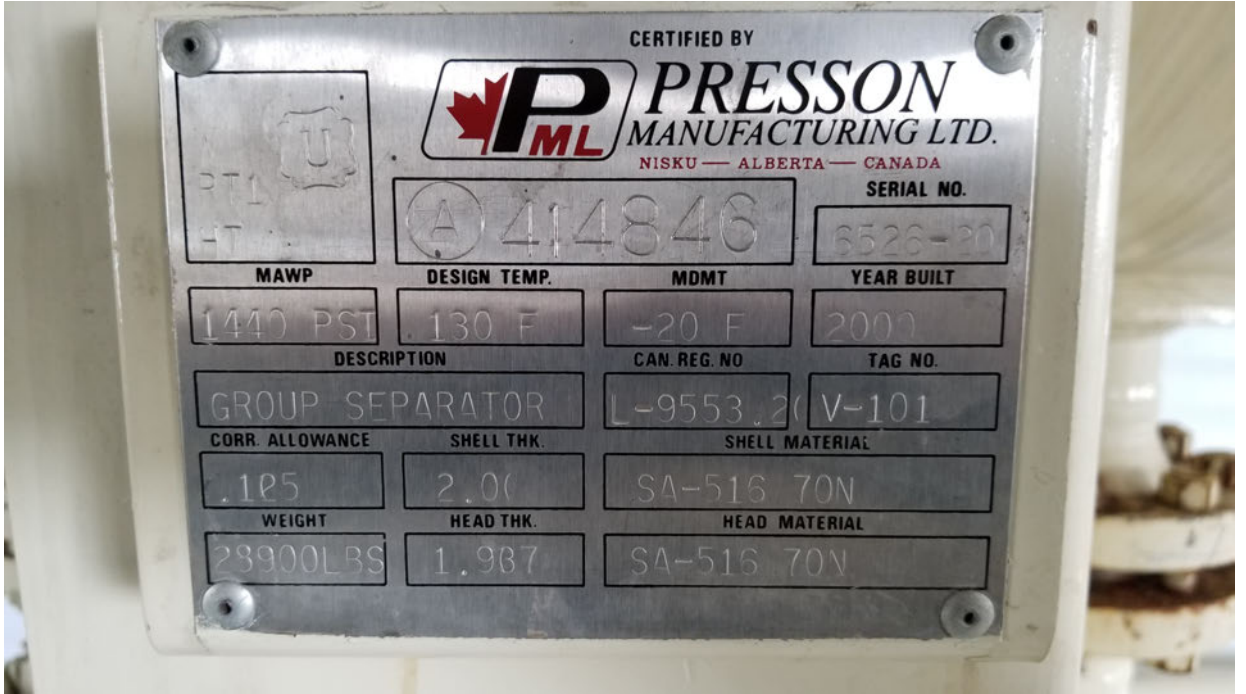
Take a 3D walkthrough at <https://bit.ly/35GLvZl>

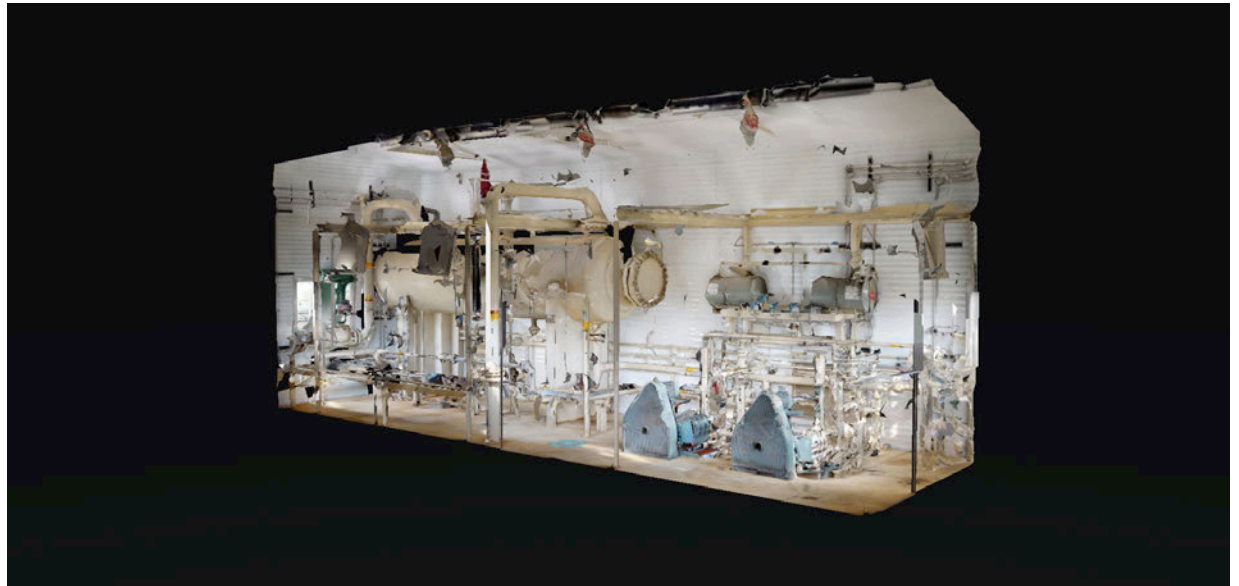


Pump	English Units					50 RPM		200 RPM		350 RPM		465 RPM	
	Plunger Dia. In.	Plunger Area Sq. In.	BPD per RPM	GPM per RPM	Max Press. PSI	BPD	GPM	BPD	GPM	BPD	GPM	BPD	GPM
T225-M 32T-2M	1.750	2.4053	2.410	0.0703	1060	120	4	482	14	843	25	1121	33
	1.625	2.0739	2.078	0.0606	1230	104	3	416	12	727	21	966	28
	1.500	1.7671	1.770	0.0516	1443	89	3	354	10	620	18	823	24
	1.375	1.4849	1.488	0.0434	1717	74	2	298	9	521	15	692	20
	1.250	1.2272	1.229	0.0359	2078	61	2	246	7	430	13	572	17
	1.125	0.9940	0.996	0.0290	2565	50	1	199	6	349	10	463	14









Take a 3D walkthrough at <https://bit.ly/35GLvZl>