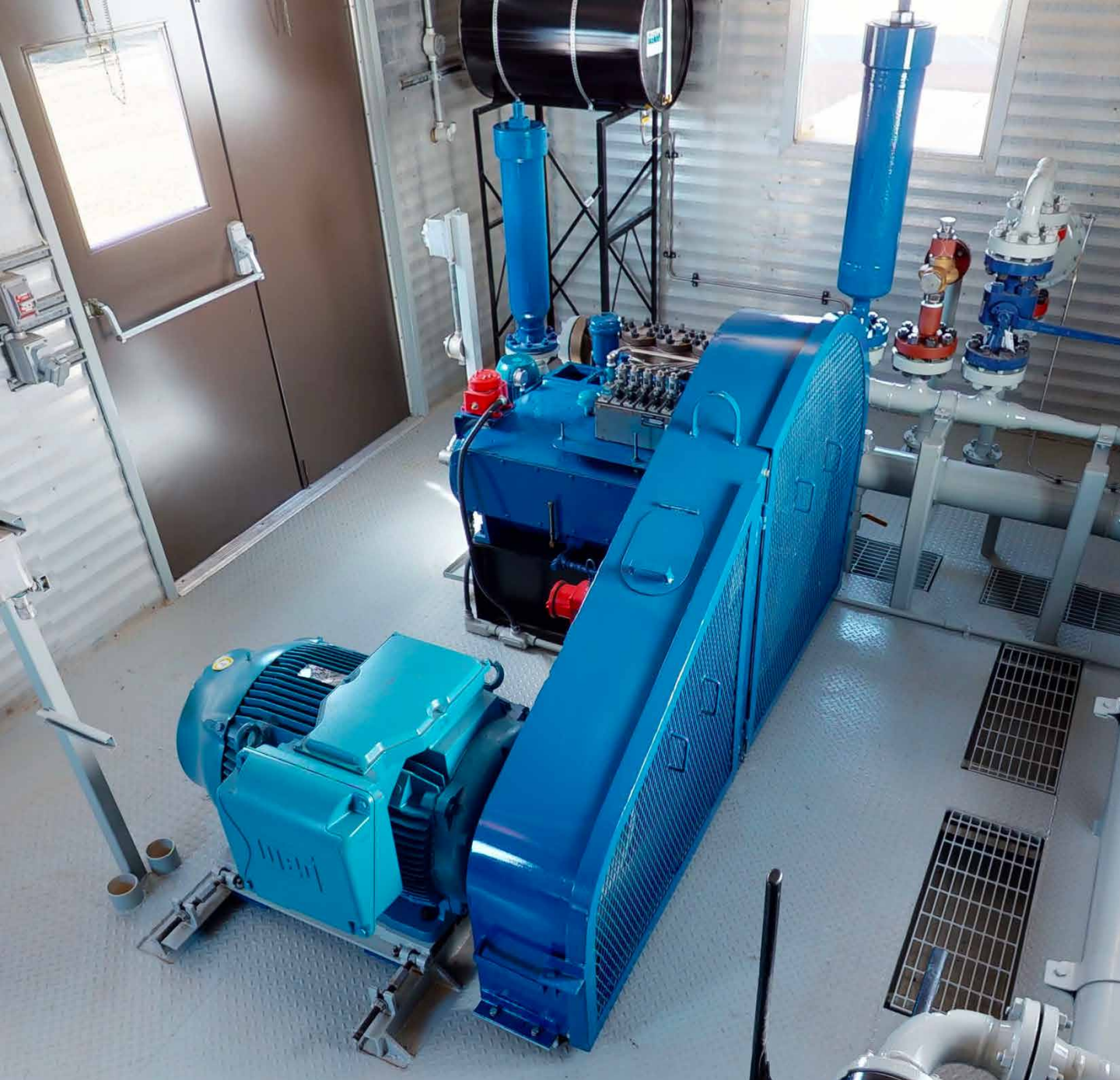


#1413

# 200HP Sour Quintuplex Pump Package

*FOR IMMEDIATE SALE*



Just refurbished! Extremely flexible, yet simple in design, this 200hp Quintuplex pump package is fully reconditioned, ready to go (just pick your plungers), and comes with the same warranty you'd get by buying new! Built for sour service, it features internally coated pipe, 7 bag SS filter, 200HP WEG Motor, ANSI style charge pump, and an aluminum bronze medium pressure fluid end. Full drawings and QA included. Located in Nisku at PACE Hauling, they are ready to load and haul this unit for you right away. Contact us to discuss for pricing, drawings, and to discuss your application.

**FOR IMMEDIATE SALE**

#1413

## 200HP Sour Quintuplex Pump Package



<b>Condition</b>	Refurbished w/ 1 Year Warranty
<b>Manufactured</b>	CrusaderJV 2020
<b>Location</b>	Pace Oilfield Hauling, Nisku, AB
<b>Availability</b>	Immediate; 1 – 2 Weeks for plungers/brass
<b>Service</b>	Sour
<b>Piping</b>	900/1500# Internally Coated
<b>Electrical</b>	Wired to Junction Boxes
<b>Dimensions</b>	14" x 22' Skid and Building
<b>Warranty</b>	12 Month (NEW) Warranty



Take a 3D walkthrough at <https://bit.ly/3dgpByQ>

# Technical Description

## MAIN PUMPS/MOTORS/ASSEMBLIES

### One (1) REMANUFACTURED Wheatley-Q4240M (NOV-Q217-4M) Quintuplex Pump (P-200)

- Client choice of plungers included
- 4" 150# FF Suction Connections
- 2" 900/1500# FF Discharge Connections
- SS Stuffing boxes
- AR Style Suction/Discharge Valves
- Low Oil Level Switch
- High Vibration Switch
- 12 Month (NEW) Warranty
- Equipped with 2HP Auxiliary power end lubrication system which is superior to splash lubrication for power end longevity and allows for slow speed operation (<150RPM) if future application requires.

Model	Plunger	Gal/Rev	Max PSI	Max kPa	100 RPM		150 RPM		200 RPM		250 RPM		300 RPM		390 RPM	
					m <sup>3</sup> /d	GPM	m <sup>3</sup> /d	GPM	m <sup>3</sup> /d	GPM	m <sup>3</sup> /d	GPM	m <sup>3</sup> /d	GPM	m <sup>3</sup> /d	GPM
National 217Q-4M	2.5"	0.4781	1793	12362	260.6	47.8	390.8	71.7	521.1	95.6	651.4	119.5	781.7	143.4	1017	186.5
	2.375"	0.4315	1986	13693	235.5	43.2	352.7	64.7	470.4	86.3	588.2	107.9	705.9	129.5	917.4	168.3
	2.25"	0.3873	2213	15258	211	38.7	316.7	58.1	422.5	77.5	527.7	96.8	633.4	116.2	823.1	151
	2.125"	0.3454	2481	17106	188.1	34.5	282.4	51.8	376.7	69.1	471	86.4	564.7	103.6	734.2	134.7
	2.0"	0.306	2801	19312	166.8	30.6	250.2	45.9	333.6	61.2	417	76.5	500.4	91.8	650.3	119.3
	1.875"	0.2689	3187	21974	146.6	26.9	219.7	40.3	293.3	53.8	366.3	67.2	439.9	80.7	571.8	104.9
	1.75"	0.2343	3600	24821	127.6	23.4	191.3	35.1	255.7	46.9	319.4	58.6	383.2	70.3	498.2	91.4

### One (1) NEW 200 HP Motor (M-200)

- WEG
- TEFC, 1200 RPM
- Roller Bering drive end
- Invertor duty rated for Constant Torque
- 460/3/60 VAC
- 449T Frame
- Belt drive system and safety guard

### One (1) 5 Feed Packing Lubricator (L-200)

- Mounted on Pump and Belt driven
- Fed from One 200 Liter Day Tank on stand

### One (1) USED Suction Pulsation Stabilizers (PD-100)

- 300 cu/in
- 4" 150# RF

### One (1) USED Discharge Pulsation Stabilizers (PD-200)

- 300 cu inch
- 2" 1500# RF

## CHARGE PUMP AND ACCESSORIES

### One (1) Eagle ANSI Charge Pump (P-100)

- 3 x 1.5 x 8 A100S ANSI centrifugal Pump
- C.S. Fluid End and Impeller
- Mechanical Seal
- Rated at 240 GPM at 65 PSI

### One (1) NEW 10 HP Charge Pump Motor (M-100)

- 10 HP, TECO 3450 RPM Motor
- TEFC
- 460/3/60 VAC
- 254 TC Frame

## FILTER VESSEL

### One (1) NEW 7 Bag filter vessel assemblies (F-100)

- 2100m<sup>3</sup>/day capacity
- Stainless Steel Construction
- Qty 7 Stainless Steel P2 size Baskets
- MAWP 150 PSI
- MAWT -20/+100 F
- 6" 150# RF connections in/out
- 2" NPT drain connection
- AB/BC/SK CRN Registration

## INSTRUMENTATION AND CONTROLS

FE-200	One (1) 2" x 2" EZ-IN Nu-Flo Turbine
FQIT-200	One (1) Halliburton MC-II Totalizer, Battery powered
VSH-200	One (1) Murphy VS2-EX High Vibration switch
LSLL-200	One (1) Murphy EL150-EX Low Pump Lube Oil Level switch
PI-100	One (1) 4" Bottom Mount, 0-15 PSI, Liquid Filled Pressure Gauge
PI-200	One (1) 4" Bottom Mount, 0-100 PSI, Liquid Filled Pressure Gauge
PI-300	One (1) 4" Bottom Mount 0-100 PSI Liquid Filled Pressure Gauge
PI-400	One (1) 4" Bottom Mount, 0-5000 PSI, Liquid Filled Pressure Gauge
DPI-100	One (1) WGI Differential Pressure gauge on filter vessel
PSL-100	One (1) CCS Dual Snap Low suction pressure switch (set falling 20 PSI)
PSL-200	One (1) CCS Dual Snap Low discharge pressure switch (set falling 1000psi)
PSH-200	One (1) CCS Dual Snap High Discharge pressure switch (set rising TBA)
PSL-201	One (1) CCS Dual snap Low aux lube oil pressure on main pump
PSV-200	One (1) 2" MNPT x 2" FNPT BAIRD762-7601 Pressure Relief Valve (set at TBA)
DT-200	One (1) 200-liter Day Tank for Plunger Lubricator
PCV-100	One (1) KIMRAY 2" 1500 # RF Startup Bypass control valve
EY-300	One (1) ASCO Solenoid for Startup bypass valve on/off control

## **PROCESS PIPING AND VALVES**

### **Suction Piping: 150# RF Design (NEW)**

- 150 PSIG MAWP, 1/8" CA, 10% RT, Sch 40
- 6" 150# ANSI RF Piping and Valves from skid edge to 4" basket strainers, isolation valve and charge pump suction.
- 1-1/2" and 4" Discharge from Charge Pump to Filter Inlet c/w 4" Isolation Valves
- 6" Filter Discharge w/ 4" Isolation Valves to 4" Pump Suction
- Internally coated with Devco 253

### **Discharge Piping: 900# RF Design (NEW)**

- 3" and 2" 900# ANSI RF Piping and Valves
- 2" 900# ANSI RF Start-up Bypass/PSV Connections
- 3" 900# Isolation and Check valve on each main pump discharge piping
- Startup Bypass and PSV discharge Into suction before charge pump
- Internally coated with Devco 253

Note\*\* Package can be operated at 1500# pressure with simply changing out 2 spools on the discharge

### **Drain Piping:**

- Filter drain are threaded 2" SCH 80 and routed to drain sump
- Basket Strainer drain is threaded 1"
- P-200 stuffing box drains are routed to drain sump

## **NOTES**

- Piping is Built to ASME B31.3 Latest Edition
- Fabricated in ABSA Approved Facility
- 10% X-Ray, PWHT Included
- All Piping is blasted, primed and painted with warm grey enamel
- All pipe/fittings/bolting/gasket materials to be standard temperature (-20 to 100F)

## **ONE (1) SKID AND BUILDING ASSEMBLY**

- One (1) 14' x 22' Structural Steel Skid assembly, winchable
- W12 steel main members
- W18 steel crossmembers
- 4 Lifting Lugs on side of skid assembly
- ¼" Checker Plate Floor
- 1.5" high containment lip around charge pump/filter drains into drain sump
- Drain sump with 2" drain piped to 2" NPT at skid edge

## **One (1) 14' x 22' x 9' Eve height Self Framing Gable Style Building**

- Painted Exterior w/ Fluted Aluminum Interior Liner
- One (1) Double Man Doors c/w Panic Hardware, IWG Window
- One (1) Single Man Doors c/w Panic Hardware, IWG Window
- Two (2) 36" x 36" Windows with sliders and screen
- One (1) Exhaust fan (high mounted in gable end) with weighted louvers w/ OA switch
- One (1) Manual Louver Inlet (Low mounted)
- One (1) Hazloc 15kW Electric Heater 480/3/60 VAC w/ built in thermostat

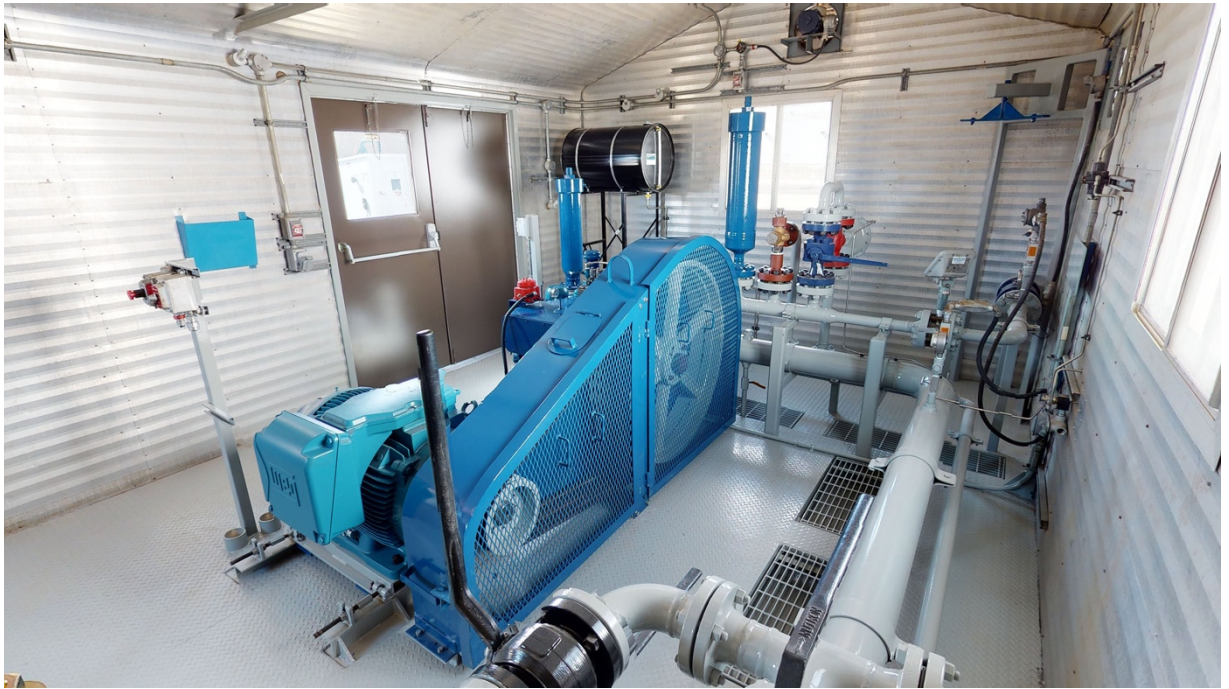
## **ELECTRICAL**

- Two (2) Interior lights with switch at single man door
- One (1) Exterior light with switch at double door
- One (1) 110 VAC electrical outlet by double door
- Three (3) HOA switches for main pump, charge pump and aux lube pump
- One (1) OA switch for exhaust fan
- One (1) High Vibration switch on main pump
- One (1) Low oil level switch on main pump
- One (1) Pressure switch low for auxiliary lube on main pump
- Two (2) ESD Switches, 1-Exterior/ 1-Interior
- Two (2) Junction boxes on exterior building 110 VAC/Analog/Discrete

## **DOCUMENTATION**

Operation, Parts, Service and QA Manual provided with package c/w:

- Pump Curves
- Installation and Operation manual
- Parts and service Manual for equipment
- Data sheets for all equipment in package
- QA includes standard Alberta AQP Package
- AB-83 for Piping/Filter Vessel
- UIA for filter vessel
- Spool dwg's
- GA, P&ID, Structural Dwgs















Take a 3D walkthrough at <https://bit.ly/3dgpByQ>