



DATE	06/07/10	SCALE	3/4"=1'-0"		
DRAWN BY	B. McLean	CHECKED BY	K. Green	APPROVED BY	D. Campbell
CUST PO	N/A				
STEP CODE	198	298	490	511	591

WAUKESHA F18GL
ARIEL JGJ/2-1/2 STD

ENERFLEX
10121 - BARLOW TRAIL N.E.
CALGARY ALBERTA CANADA

DWG NO	318
-----------	-----

PERMIT TO
PRACTISE APEGGA PERMIT: No. P8651

TITLE	PLAN VIEW
-------	-----------


3-201

SHT	1
-----	---

REV 3

NOZZLE SCHEDULE					
MARK	SERVICE	SIZE	RATING	TYPE	
1	AIR INLET	8"	300#	RF	
2	FINAL DISCHARGE	4"	600#	RF	
3	HIGH PRESSURE VENT HEADER (AIR)	4"	150#	RF	
4	SCRUBBER DRAIN HEADER	2"	150	RF	
5	FUEL GAS INLET	1 1/2"	150#	RF	
6	GLYCOL STAND PIPE	2"	3000#	MNP	
7	RECIP BYPASS OUTLET	4"	600#	RF	
8	GLYCOL FILL	1"	3000#	MNP	
9	WASTE OIL DRAIN	2"	3000#	MNP	
10	WASTE GLYCOL DRAIN	2"	3000#	MNP	
11	ENGINE/COMP LUBE OIL FILL	3/4"	-	HOSH	
12	STARTER VENT	2"	-	PIPE	
13	INSTRUMENT AIR SUPPLY	1"	3000#	MNP	
14	HIGH PRESSURE VENT HEADER (GAS)	2"	-	-	
15	LP INSTRUMENT VENT HEADER	1"	-	PIPE	
16	COMPRESSOR OIL FILL	2"	-	MNP	
17	START GAS INLET	1 1/2"	150#	RF	
18	EXHAUST	8"	12CA	TUB	

GENERAL SPECIFICATIONS			
OVERALL PACKAGE LENGTH		31'-9 1/8"	
OVERALL PACKAGE WIDTH		16'-9"	
OVERALL PACKAGE HEIGHT (w/STACK)		24'-9"	
OVERALL OPERATING PACKAGE WEIGHT (LBS)		75500	
MAIN SKID SHIPPING WEIGHT (LBS)		74300	
BRIDGE CRANE RATING		3 TON	
SEAL PAN	<input checked="" type="checkbox"/> FLAT	<input type="checkbox"/> NONE	<input type="checkbox"/> SLOPED
LOADING METHOD	<input type="checkbox"/> LIVE ROLL	<input type="checkbox"/> CRANE	<input checked="" type="checkbox"/> JACK & ROLL

- NOTES:
1. ALL (Z) DIMENSIONS TAKEN FROM TOP OF SKID.
 2. ALL OTHER NOTES FOUND ON DWG. #LEGEND.
 3. ALL SKID EDGE CONNECTIONS $\pm 1/4"$ TOLERANCE.
 4.  ALL TAIL DIMENSIONS FROM REFERENCE POINT.
 6. SKID DEPTH:
 5. CENTER OF GRAVITY:
 - 'X' FROM REF. POINT: 164.287
 - 'Y' FROM REF. POINT: 0.839
 - 'Z' FROM REF. POINT: 30.798



'Z' DIMENSION FROM
TOP OF SKID

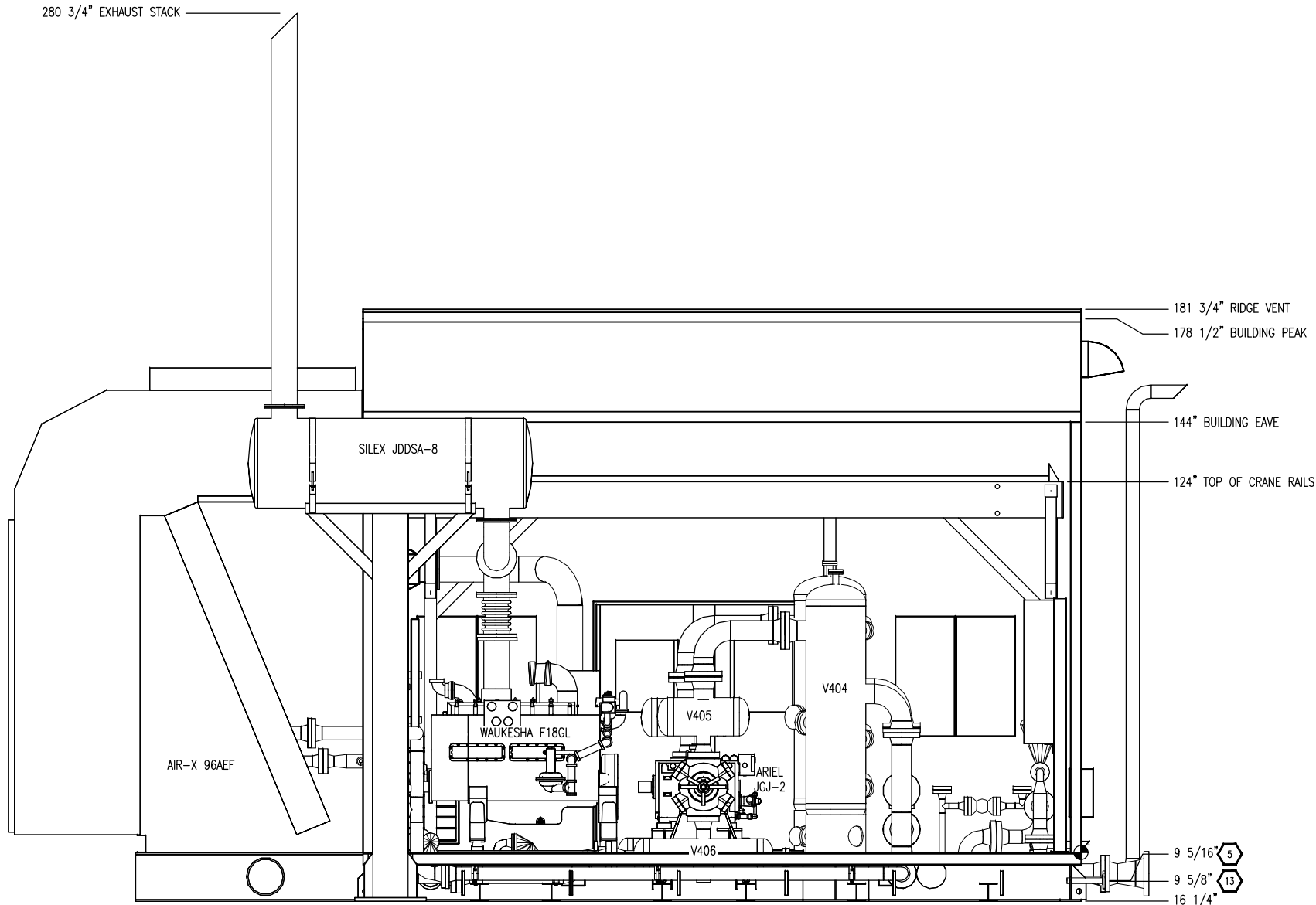
DESTROY PREVIOUS COPIES

FINAL AS BUILT

NAME B. McLean DATE 12/14/10

C:\Users\jmclean\TES\updates\local\temp\AsP\AsBuilt_1860\31833-MODEL-AS-BUILT.dwg

PLOT DATE January 07, 2011



ELEVATION VIEW A-A

NOTE:
ALL TAIL DIMENSIONS ARE
TAKEN FROM REFERENCE
POINT  AT TOP OF SKID

3	AS-BUILT	12/14/10	BM	K.G.
2	REMOVE HOT BYPASS SPOOLING - IFC	09/15/10	BM	K.G.
1	ISSUED FOR CONSTRUCTION	08/04/10	TT	KG
REV	DESCRIPTION	DATE	BY	APR

DATE	06/07/10	SCALE	1/2"=1'-0"	FOR
DRAWN BY	B. McLean	CHECKED BY	K. Green	APPROVED BY
CUST PO	N/A			
STEP CODE	198	298	490	511 591

WAUKESHA F18GL
ARIEL JGJ/2-1/2 STD

ENERFLEX
10121 - BARLOW TRAIL N.E. CALGARY ALBERTA CANADA

PERMIT TO PRACTISE		APEGGA PERMIT: No. P8651	
TITLE		<u>ELEVATION 'A-A'</u>	
3-201	SHT	2	REV 3


DESTROY PREVIOUS COPIES

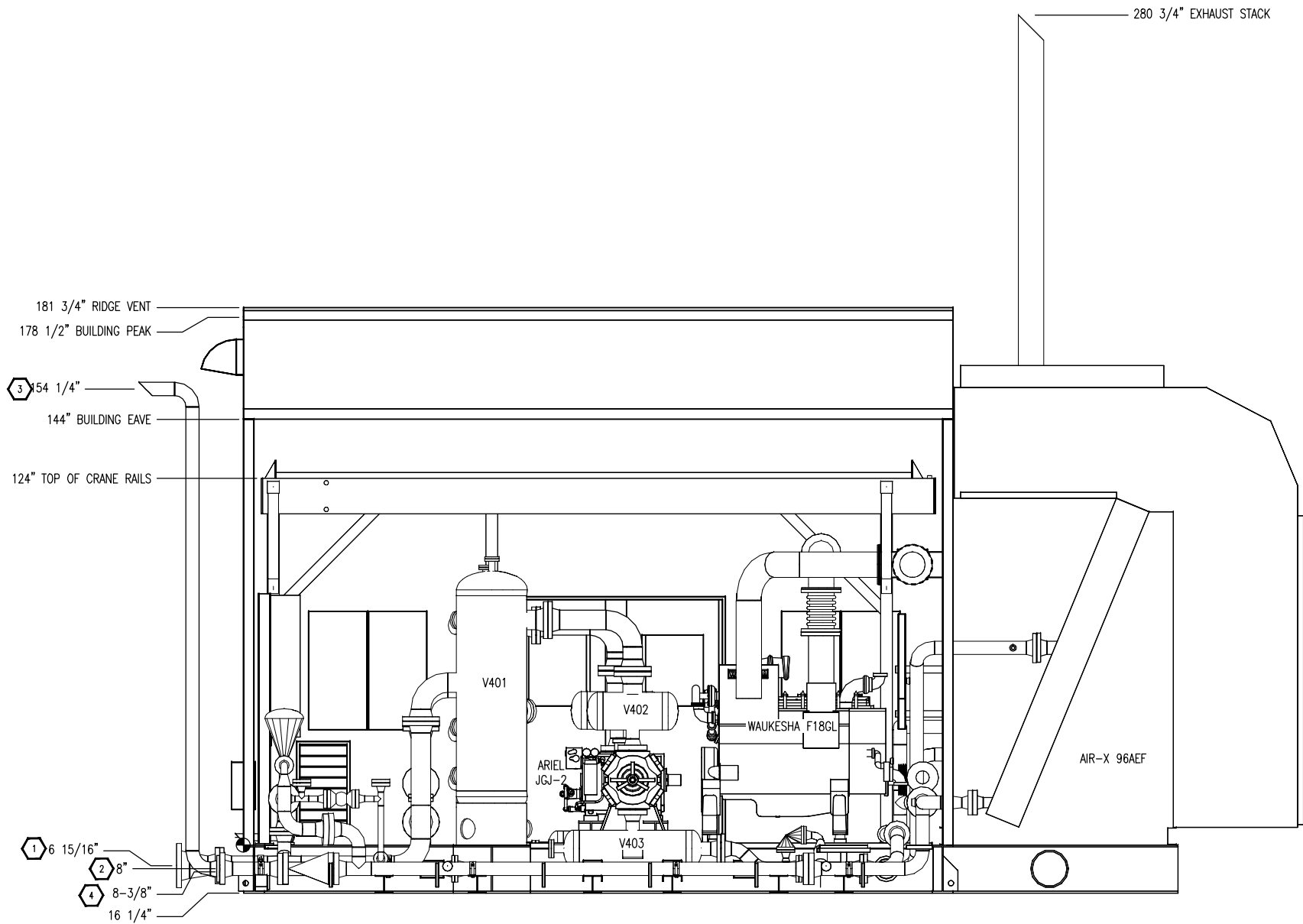
**FINAL
AS BUILT**
NAME B. McLean DATE 12/14/10

THE INFORMATION CONTAINED HEREIN IS THE CONFIDENTIAL PROPERTY OF TORMONT ENERGY SYSTEMS AND IS NOT FOR PUBLICATION, AND NO PART THEREOF SHALL BE COPIED OR COMMUNICATED TO A THIRD PARTY WITHOUT AUTHORIZATION FROM TORMONT ENERGY SYSTEMS.

C:\Users\jmclean\TES\projectdata\local\temp\AsPublished_1860\31833-MODEL-AS-BUILT.dwg

PLOT DATE January 07, 2011

NOTE:
ALL TAIL DIMENSIONS ARE
TAKEN FROM REFERENCE
POINT  AT TOP OF SKID



ELEVATION VIEW B-B

DESTROY PREVIOUS COPIES

**FINAL
AS BUILT**

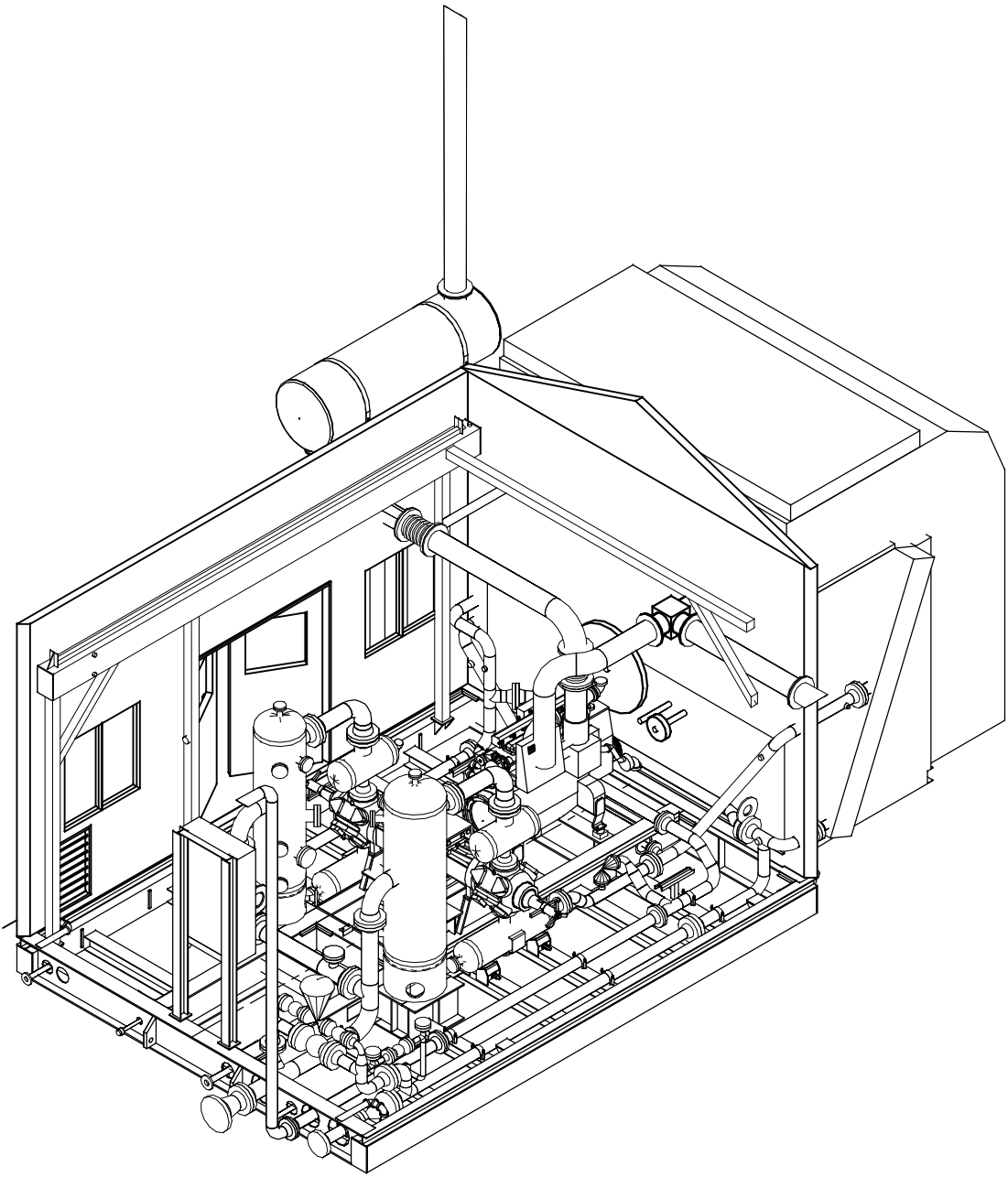
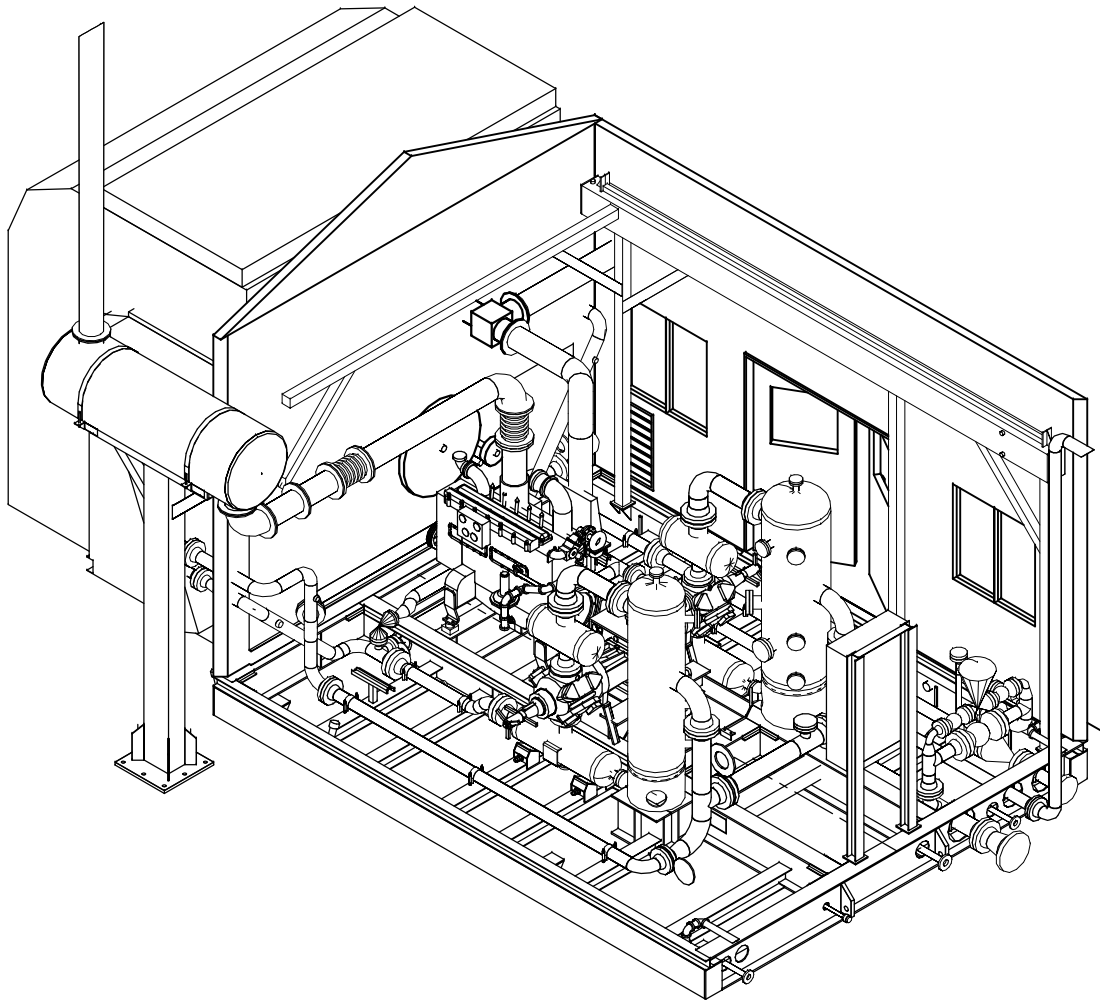
NAME B. McLean DATE 12/14/10

					PERMIT TO PRACTISE APEGGA PERMIT: No. P8651	
DATE 06/07/10		SCALE 1/2"=1'-0"		FOR		
DRAWN BY B. McLean		CHECKED BY K. Green		APPROVED BY B. Campbell		
CUST PO		N/A		Waukesha F18GL ARIEL JGJ/2-1/2 STD		
STEP CODE		198 298 490 511 591		ENERFLEX 10121 - BARLOW TRAIL N.E. CALGARY ALBERTA CANADA		
DWG NO		31833-201		SHT 3		
REV		DESCRIPTION		REV 3		
3 AS-BUILT		12/14/10 BM K.G.		TITLE ELEVATION 'B-B'		
2 REMOVE HOT BYPASS SPOOLING - IFC		09/15/10 BM K.G.				
1 ISSUED FOR CONSTRUCTION		08/04/10 TT KG				

THE INFORMATION CONTAINED HEREIN IS THE CONFIDENTIAL PROPERTY OF TORMONT ENERGY SYSTEMS AND IS NOT FOR PUBLICATION, AND NO PART THEREOF SHALL BE COPIED OR COMMUNICATED TO A THIRD PARTY WITHOUT AUTHORIZATION FROM TORMONT ENERGY SYSTEMS.

C:\Users\jmclean\TES\projectdata\local\temp\AsPublished_1860\31833-MODEL-AS-BUILT.dwg

PLOT DATE January 07, 2011



3D VIEW

DESTROY PREVIOUS COPIES

**FINAL
AS BUILT**
NAME B. McLean DATE 12/14/10

3	AS-BUILT	12/14/10	BM	K.G.
2	REMOVE HOT BYPASS SPOOLING - IFC	09/15/10	BM	K.G.
1	ISSUED FOR CONSTRUCTION	08/04/10	TT	KG
REV	DESCRIPTION	DATE	BY	APR

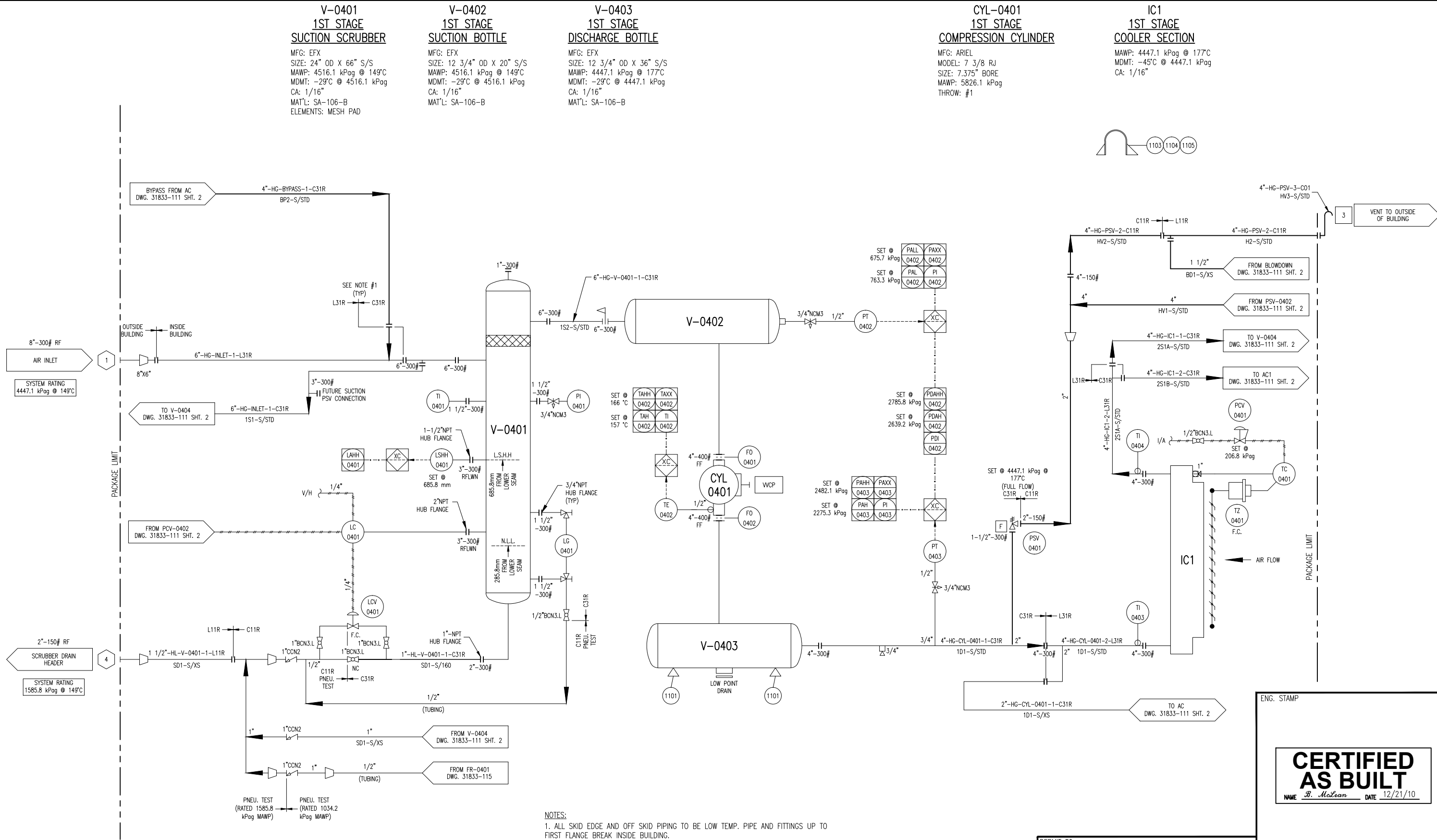
DATE	06/07/10	SCALE	3/8"=1'-0"	FOR
DRAWN BY	B. McLean	CHECKED BY	K. Green	APPROVED BY
CUST PO	N/A			
STEP CODE	198	298	490	511 591

WAUKESHA F18GL	
ARIEL JG1/2-1/2 STD	

ENERFLEX
10121 - BARLOW TRAIL N.E. CALGARY ALBERTA CANADA

PERMIT TO PRACTISE	APEGGA PERMIT: No. P8651
TITLE	3D VIEW
DWG NO	31833-201
SHT	4
REV	3

THE INFORMATION CONTAINED HEREIN IS THE CONFIDENTIAL PROPERTY OF TORMONT ENERGY SYSTEMS AND IS NOT FOR PUBLICATION, AND NO PART THEREOF SHALL BE COPIED OR COMMUNICATED TO A THIRD PARTY WITHOUT AUTHORIZATION FROM TORMONT ENERGY SYSTEMS.



NOTES:
1. ALL SKID EDGE AND OFF SKID PIPING TO BE LOW TEMP. PIPE AND FITTINGS UP TO FIRST FLANGE BREAK INSIDE BUILDING.

4	AS BUILT	12/21/10	JH	KG	DATE	06/04/10	SCALE	NTS	FOR	WAUKESHA F18GL	10121 - BARLOW TRAIL N.E. CALGARY ALBERTA CANADA	TITLE	P & I DIAGRAM PROCESS GAS STAGE #1	REV	4
3	FOR REGISTRATION	11/18/10	JH	KG	DRAWN BY	C. CAMPBELL	CHECKED BY	J. BROWN	APPROVED BY	B. CAMPBELL					
2	HOT BYPASS REMOVED	09/15/10	JH	KG	CUST PO	N/A									
1	ISSUED FOR FABRICATION	06/25/10	BM	DC	STEP CODE	198 490 511 591									
A	ISSUED FOR APPROVAL	06/04/10	CE	DC											
REV	DESCRIPTION	DATE	BY	APR											

ENG. STAMP
CERTIFIED AS BUILT
NAME *B. McLean* DATE *12/21/10*

PERMIT TO PRACTISE APEGGA PERMIT: No. P8651

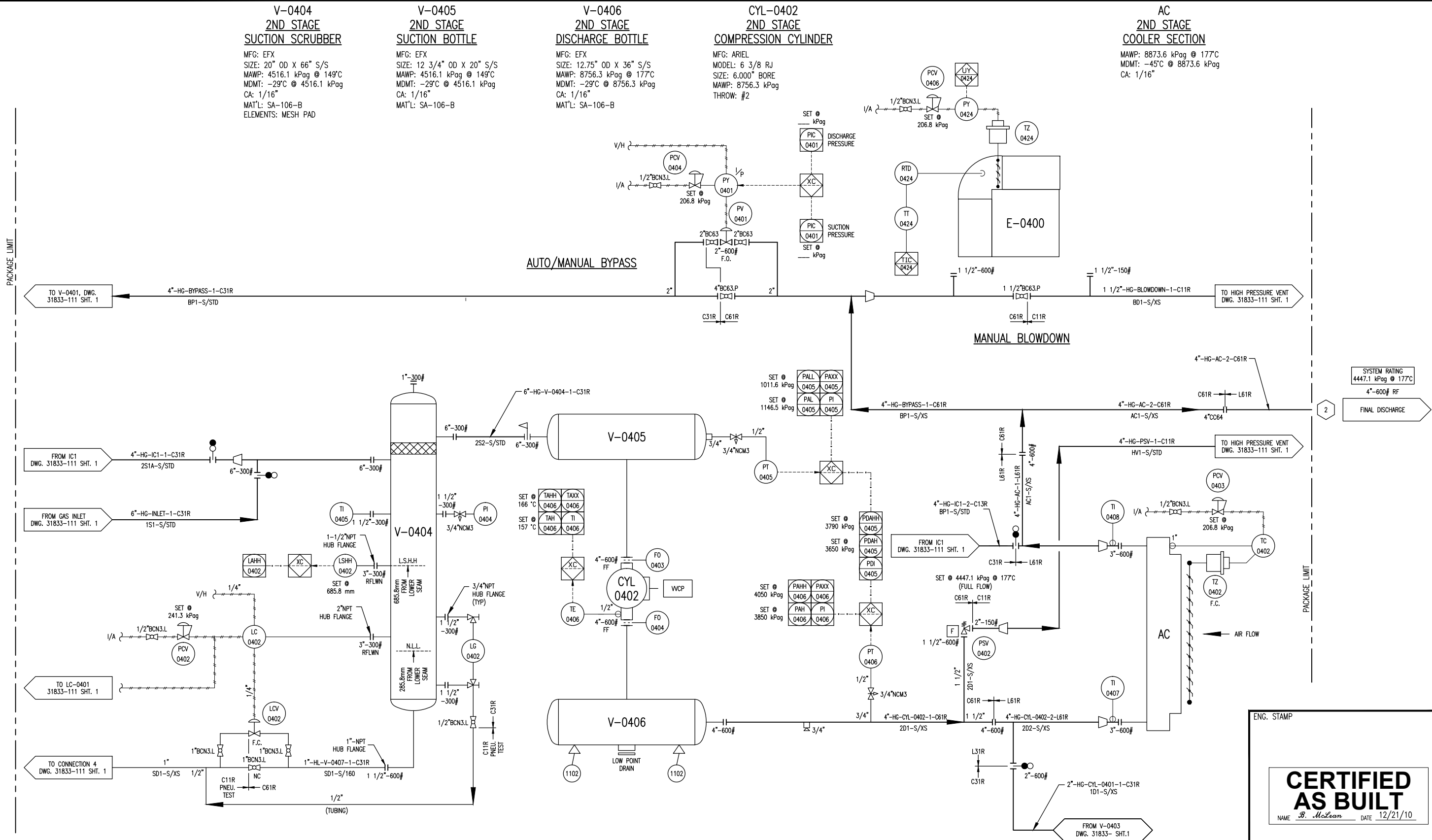
ENERFLEX

10121 - BARLOW TRAIL N.E.
CALGARY ALBERTA CANADA

DWG NO 31833-111

SHT 1

REV 4



4	AS BUILT	12/21/10	JH	KG	DATE	06/04/10	SCALE	NTS
3	FOR REGISTRATION	11/18/10	JH	KG	DRAWN BY	C. Campbell	CHECKED BY	J. Green
2	CUSTOMER MARK UP ADDED & HOT BYPASS REMOVED	09/15/10	JH	KG	APPROVED BY	B. Campbell		
1	ISSUED FOR FABRICATION	06/25/10	BM	DC	CUST PO	N/A		
A	ISSUED FOR APPROVAL	06/04/10	CE	DC	STEP CODE	198 490 511 591		
REV	DESCRIPTION	DATE	BY	APR				

DATE	06/04/10	SCALE	NTS
DRAWN BY	C. Campbell	CHECKED BY	J. Green
APPROVED BY	B. Campbell		
CUST PO	N/A		
STEP CODE	198 490 511 591		

PERMIT TO PRACTISE	APEGGA PERMIT: No. P8651
FOR	WAUKESHA F18GL ARIEL JGJ/2-1/2 STD
ENERFLEX	10121 - BARLOW TRAIL N.E. CALGARY ALBERTA CANADA
DWG NO	31833-111

TITLE	P & I DIAGRAM PROCESS GAS STAGE #2
SHT	2
REV	4

ENG. STAMP
CERTIFIED AS BUILT
NAME B. McLean DATE 12/21/10

PACKAGE LIMIT

K-0400
RECIPROCATING GAS
COMPRESSOR FRAME
MFG: ARIEL
MODEL: JGJ/2
RATED POWER: 620 HP @ 1800 RPM
STROKE: 3.50 in.
ROD LOAD, TOTAL: 42,000 lbs.
ROD LOAD, COMPRESSION: 23,000 lbs.
ROD LOAD, TENSION: 21,000 lbs.

KBU-0400
BUILDING EXHAUST FAN
MFG: SOPELPOWER:
POWER: 115 VAC, 4.8A
(WIRED TO JBP-0400)

CE-0401
COMPRESSOR ENGINE
MFG: WAUKESHA
MODEL: F18GL
BORE: 5.98"
STROKE: 6.5"
DISPLACEMENT: 1096 IN CU.
COMP RATIO: 8.7:1
POWER: 400 BHP @ 1800 RPM

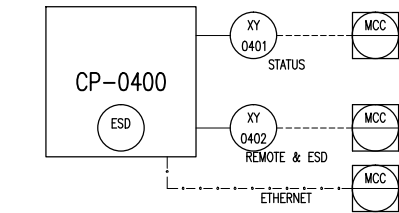
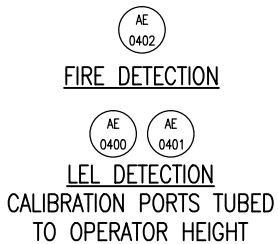
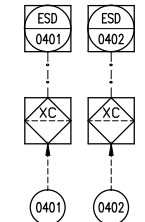
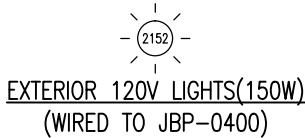
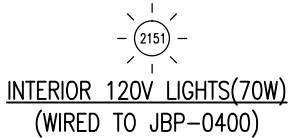
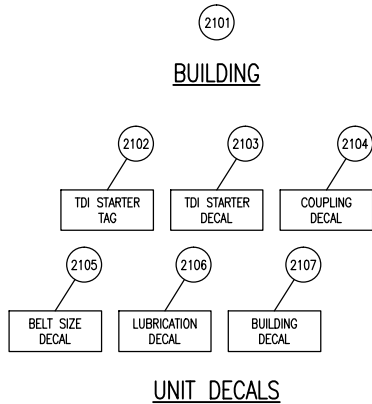
CP-0400
CONTROL PANEL
MFG: EFX
POWER: 24 VDC
PROCESSOR: COMPACT LOGIX

JBP-0400
JUNCTION BOX
MFG: EFX
FOR: 120 VAC

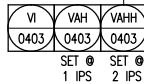
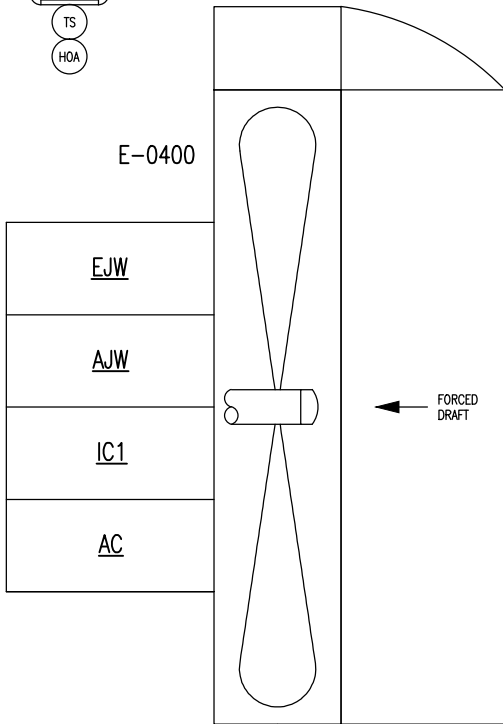
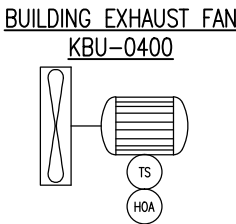
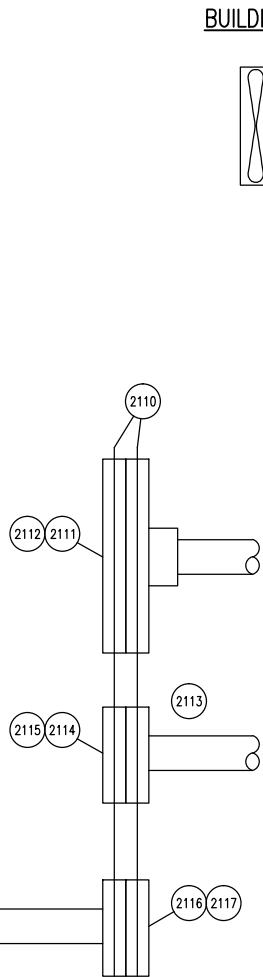
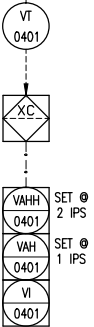
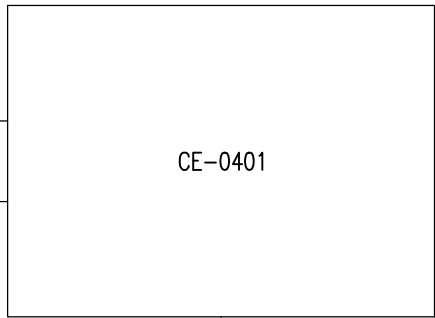
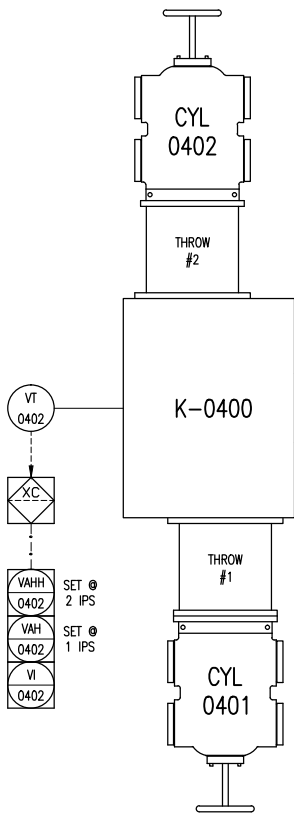
JBC-0400
JUNCTION BOX
MFG: EFX
FOR: 24DC DISCRETE SIGNALS

JBA-0400
JUNCTION BOX
MFG: EFX
FOR: ANALOGS

E-0400
PACKAGE GAS COOLER FRAME
MFG: AIR-X-LIMITED
MODEL: 96AEF
TYPE: FORCED DRAFT
AIR FLOW: 82,740 SCFM
FAN TYPE: 1 MOORE 96DIA. X 6 BLADE
FAN POWER: 21.3 BHP @ 418 RPM
AMBIENT AIR: 40°C
EXIT AIR: 54°C



BUILDING RECEPTACLE



FROM FSL-0401
DWG: 31833-113



PACKAGE LIMIT

REV	DESCRIPTION	DATE	BY	APR
3	AS BUILT	12/21/10	JH	KG
2	REVISED AS PER CUSTOMER MARK UP	09/15/10	JH	KG
1	ISSUED FOR FABRICATION	06/25/10	BM	DC
A	ISSUED FOR APPROVAL	06/04/10	CE	DC

STEP	CODE	151	198	511	712	721
DATE	06/04/10					
SCALE	NTS					
DRAWN BY	C. EASBY/PE					
CHECKED BY	X. BROWN					
APPROVED BY	B. CAMPBELL					
CUST PO	N/A					

PERMIT TO PRACTISE APEGGA PERMIT: No. P8651

FOR

WAUKESHA F18GL

ARIEL JGJ/2-1/2 STD

ENERFLEX

10121 - BARLOW TRAIL N.E.
CALGARY ALBERTA CANADA

DWG NO 31833-112

SHT 1

REV 3

ENG. STAMP

CERTIFIED AS BUILT

NAME B. McLean DATE 12/21/10

TITLE

P & I DIAGRAM

DRIVE TRAIN / CONTROL PANEL